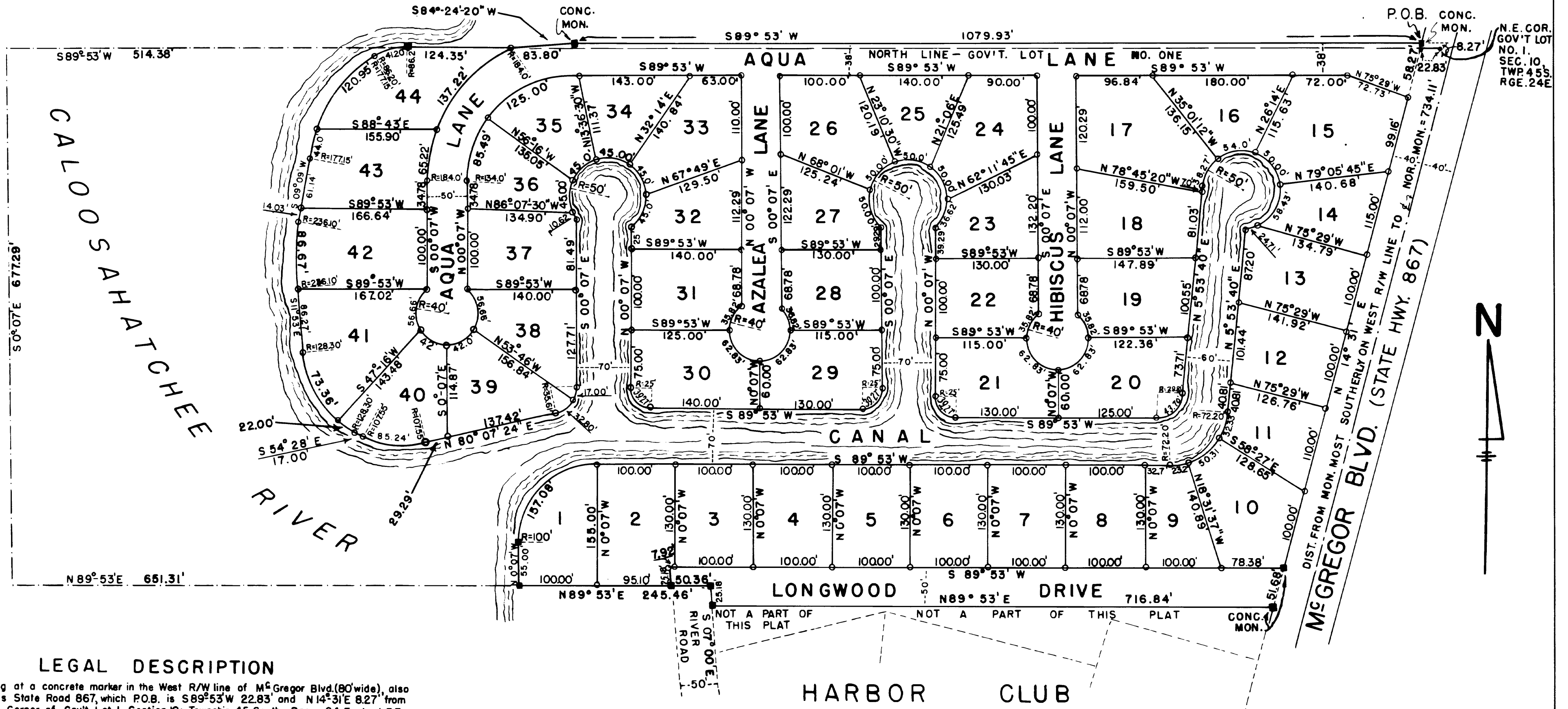


WHISKEY CREEK

A SUBDIVISION IN THE NW¹/₄ OF SEC. 10, T45S, R24E, LEE COUNTY, FLORIDA, MORE PARTICULARLY DESCRIBED BELOW.



LEGAL DESCRIPTION

Beginning at a concrete marker in the West R/W line of McGregor Blvd. (80' wide), also known as State Road 867, which P.O.B. is S89°53'W 22.83' and N14°31'E 8.27' from the NE Corner of Gov't. Lot 1, Section 10, Township 45 South, Range 24 East, LEE County, State of Florida, proceed thence S89°53'W 1079.93 feet to a concrete marker, thence S84°24'20"W 83.80' feet to a concrete marker in the North line of said Gov't. Lot 1, thence along said North line extended S89°53'W 124.35 feet to a concrete marker in the East shore line of Caloosahatchee River, thence S89°53'W 514.38 feet to a point in the said river, thence S0°07'E 677.29' to a point in said river, thence N89°53'E 651.31 feet to a concrete marker in the East shore line of the said Caloosahatchee River, thence N89°53'E 245.46 feet to a concrete marker in the East R/W line of the Northerly prolongation of River Road (see HARBOR CLUB, on page 84, Plat Book 8, Public Records of Lee County, Florida), thence S7°00'E along said prolongation 25.18 feet to a concrete marker, thence N89°53'E 716.84 feet to a concrete marker in the West R/W line of McGregor Blvd. (State Road 867), thence N14°31'E along said West R/W line 734.11 feet to the Point of Beginning.

MARION ENGINEERING ASSOCIATES inc. Ocala, Florida.
DATE: JAN. 19, 1953. SCALE: 1 inch = 100 feet.

○ = IRON PIPE P.R.M.
■ = 4"x4" CONCRETE P.R.M.

NOTE:

All lot lines extend to the water's edge and carry full riparian rights.

STATE OF FLORIDA
COUNTY OF LEE

WE, THE UNDERSIGNED, VICTOR DELA FRANIER and wife ELSA DELA FRANIER, the owners of the land shown on this plat, do hereby authorize the same to be recorded in the Public Records of LEE County, Florida, and by our execution do authorize the dedication to the public forever the Streets as shown on this plat.

WITNESS, our hands and seals this 21st day of January, A.D. 1953.

Signed, sealed, and delivered in the presence of:

[Signatures]

[Signatures: Victor De La Franier, Elsa De La Franier]

STATE OF FLORIDA
COUNTY OF LEE

I, HEREBY CERTIFY that VICTOR DELA FRANIER and wife ELSA DELA FRANIER, whose names are signed to the foregoing dedication, and who are well known to me, appeared before me this day and acknowledged that they executed the same for the purposes as therein expressed and as their free act and deed.

WITNESS, my hand and official seal, County of LEE and State of Florida, this 21st day of January, A.D. 1953.

My commission expires May 22, 1954.

[Signature]
Notary Public, State of Florida at Large

STATE OF FLORIDA
COUNTY OF LEE

I, JACK W. JERNIGAN, the surveyor making this plat do hereby certify that it is a correct representation of the land platted and permanent reference monuments have been placed thereon as called for under Section 7, Chapter 10275 Laws of Florida.

[Signature: Jack W. Jernigan]
Survey Certificate No. 574
State of Florida

Subscribed and sworn to before me this 19th day of JANUARY, A.D. 1953.

My commission expires AUG. 10, 1956.

[Signature]
Notary Public, State of Florida at Large

This certifies that this plat was presented to the Board of County Commissioners of LEE County, Florida and was approved for record by them on the 21st day of January, A.D. 1953.

[Signature]
Chairman
[Signature]
Clerk

I, D.T. FARABEE, Clerk of the Circuit Court of LEE County, Florida do hereby certify that the foregoing plat conforms to the provisions of Section 7, Chapter 10275 Laws of Florida, was filed for record on the 21st day of January, 1953 and was recorded in the Public Records of said County on the 21st day of January, A.D. 1953 in Plat Book _____ Page _____

[Signature]
Clerk