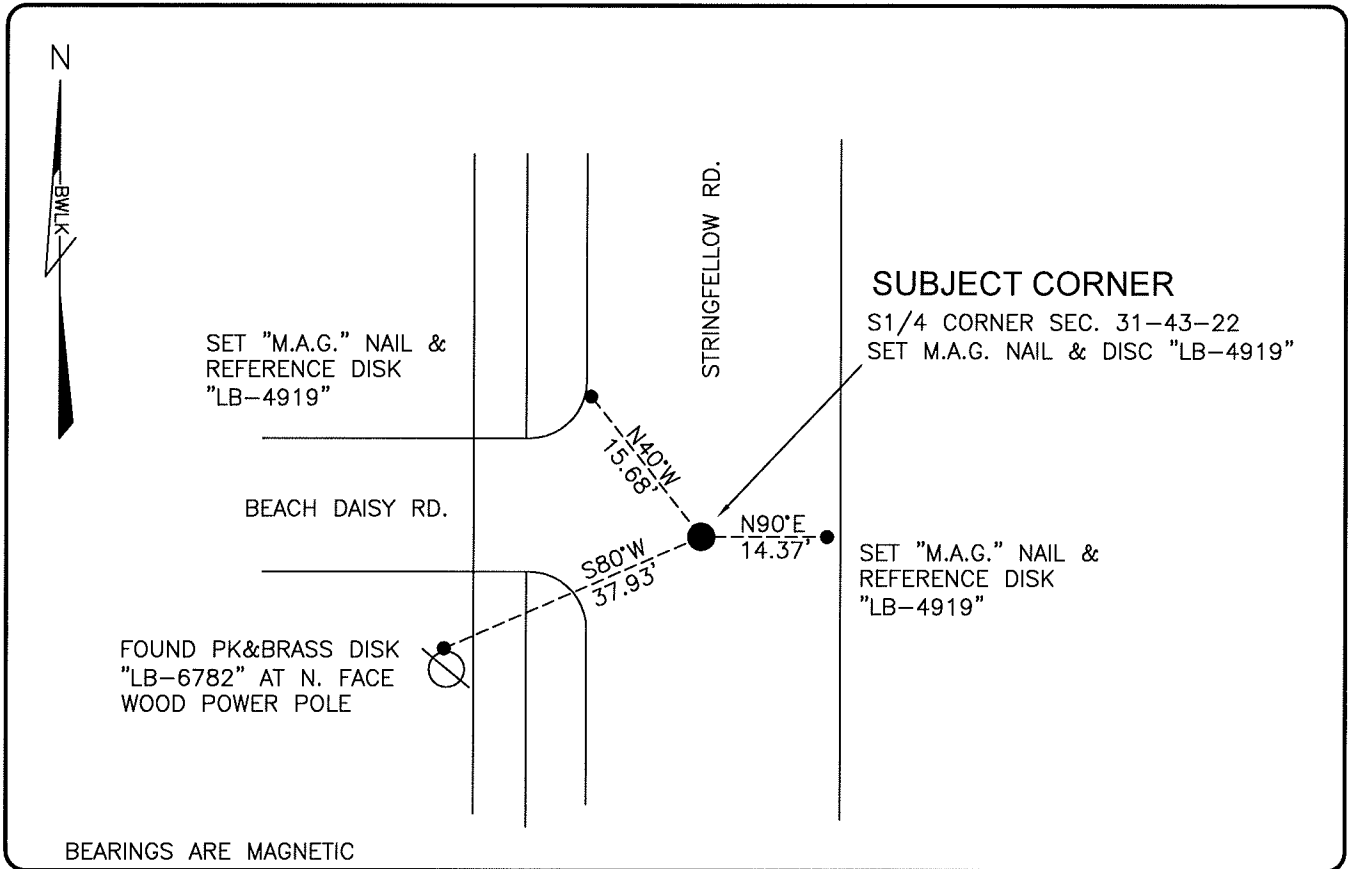


LAND CORNER RECORD

PUBLIC WORKS
LEE COUNTY, FLORIDA

Address - 1500 Monroe St., Ft. Myers, Fla. 33901

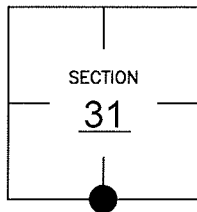
Phone : (239) 479-8900



COMMENTS: GENERALLY ACCEPTED CORNER BY LOCAL SURVEYORS. CORNER IN HARMONY WITH UNRECORDED PLAT OF FLORIDA STATE PROPERTIES UNIT NO. 4, PINE ISLAND AS PREPARED BY CADASTRAL SURVEYORS JUNE, 1971

CORNER DESCRIPTION

S1/4 Corner
Section 31
Township 43
Range 22



HORIZONTAL POSITION INFORMATION

Florida West Zone, NAD 1983(1990 Adjustment)
Northing(ft) 852501.81 Easting(ft) 607436.35
Latitude 26°40'44.2494" Longitude 82°08'57.2373"
Scale Factor 0.99994

EXISTING CERTIFIED CORNER RECORDS

Document No.	Date
NONE	NONE

The above documents are based on FDEP Bureau of Surveying and Mapping Record Information.

I hereby certify the monument and accessories shown above were field located on 3-22-07

Scott C. Whitaker
SCOTT C. WHITAKER
Professional Surveyor and Mapper
Florida Certificate No. 4324
Date Signed 3/14/07
BEAN, WHITAKER, LUTZ & KAREH, INC. (LB 4919)
13041 McGregor Boulevard
Fort Myers, Florida 33919-5910
Phone: (239) 481-1331

POINT NO. 11552

BLM REFERENCE NO. T43SR22E140100