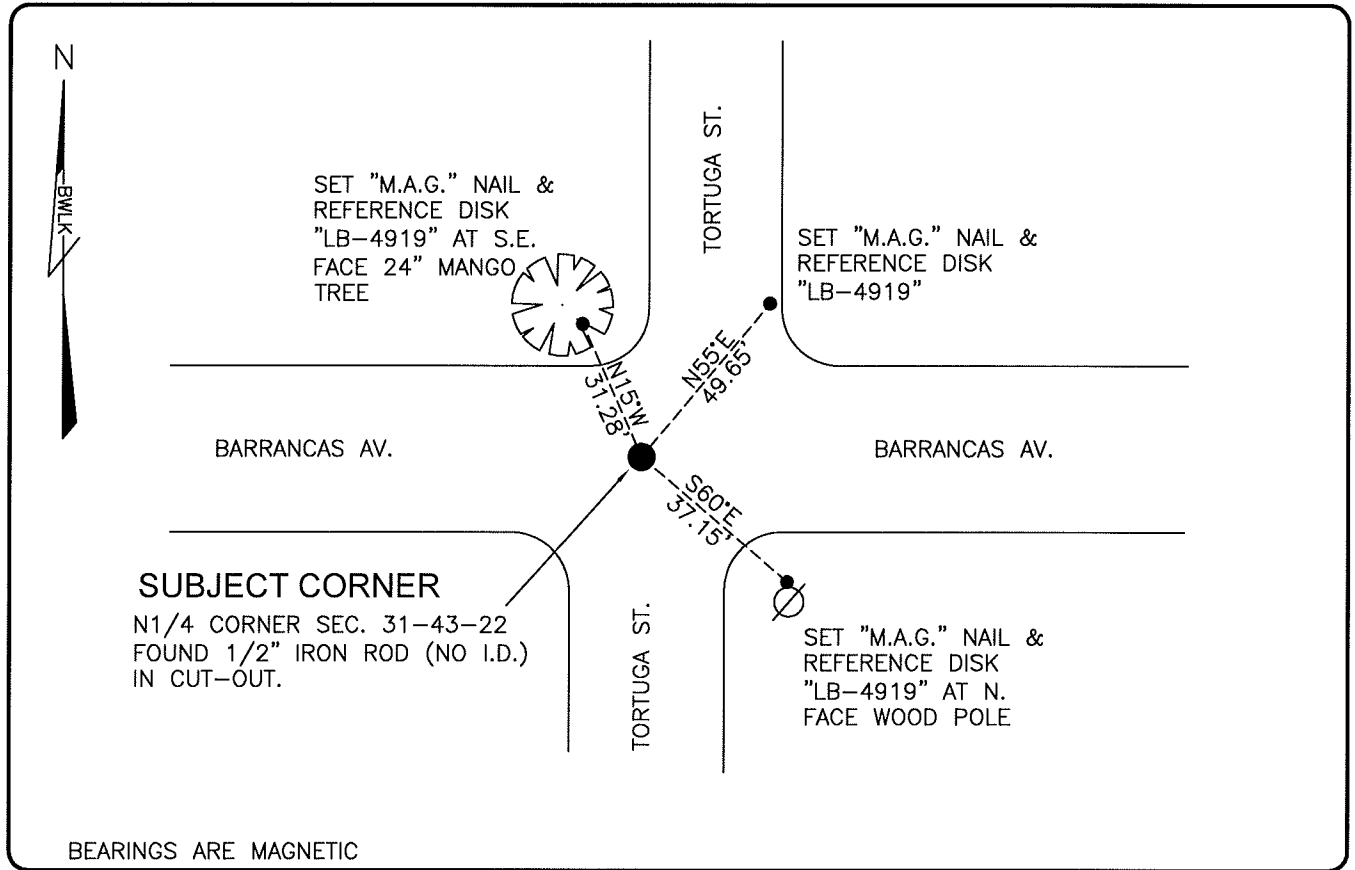


LAND CORNER RECORD

PUBLIC WORKS
LEE COUNTY, FLORIDA

Address - 1500 Monroe St., Ft. Myers, Fla. 33901

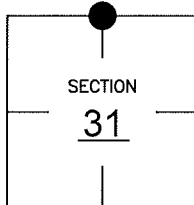
Phone : (239) 479-8900



COMMENTS: GENERALLY ACCEPTED CORNER BY LOCAL SURVEYORS.

CORNER DESCRIPTION

N1/4 Corner
Section 31
Township 43
Range 22



HORIZONTAL POSITION INFORMATION

Florida West Zone, NAD 1983(1990 Adjustment)

Northing(ft) 857863.90 Easting(ft) 607390.01

Latitude 26°41'37.3546" Longitude 82°08'57.8174"

Scale Factor 0.99994

EXISTING CERTIFIED CORNER RECORDS

| Document No. | Date |
|--------------|------|
| NONE | NONE |
| | |
| | |
| | |
| | |

The above documents are based on FDEP Bureau of Surveying and Mapping Record Information.

I hereby certify the monument and accessories shown above were field located on 3-22-07.

Scott C. Whitaker
SCOTT C. WHITAKER
Professional Surveyor and Mapper
Florida Certificate No. 4324
Date Signed 3/14/07

BEAN, WHITAKER, LUTZ & KAREH, INC. (LB 4919)
13041 McGregor Boulevard
Fort Myers, Florida 33919-5910
Phone: (239) 481-1331

POINT NO. 11067

BLM REFERENCE NO. T43SR22E140200