

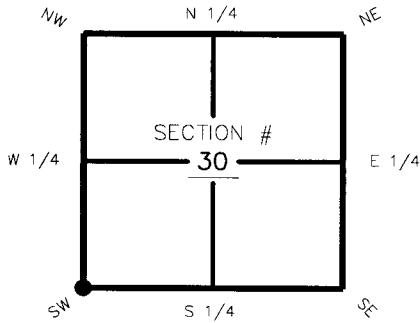
FLORIDA DEPARTMENT OF ENVIRONMENTAL PROTECTION CERTIFIED CORNER RECORD

DOC. # 094777

CORNER DESCRIPTION: MONUMENTATION DESCRIPTION (EVIDENCE FOUND OR METHOD TO SET)

Depict corner with ●

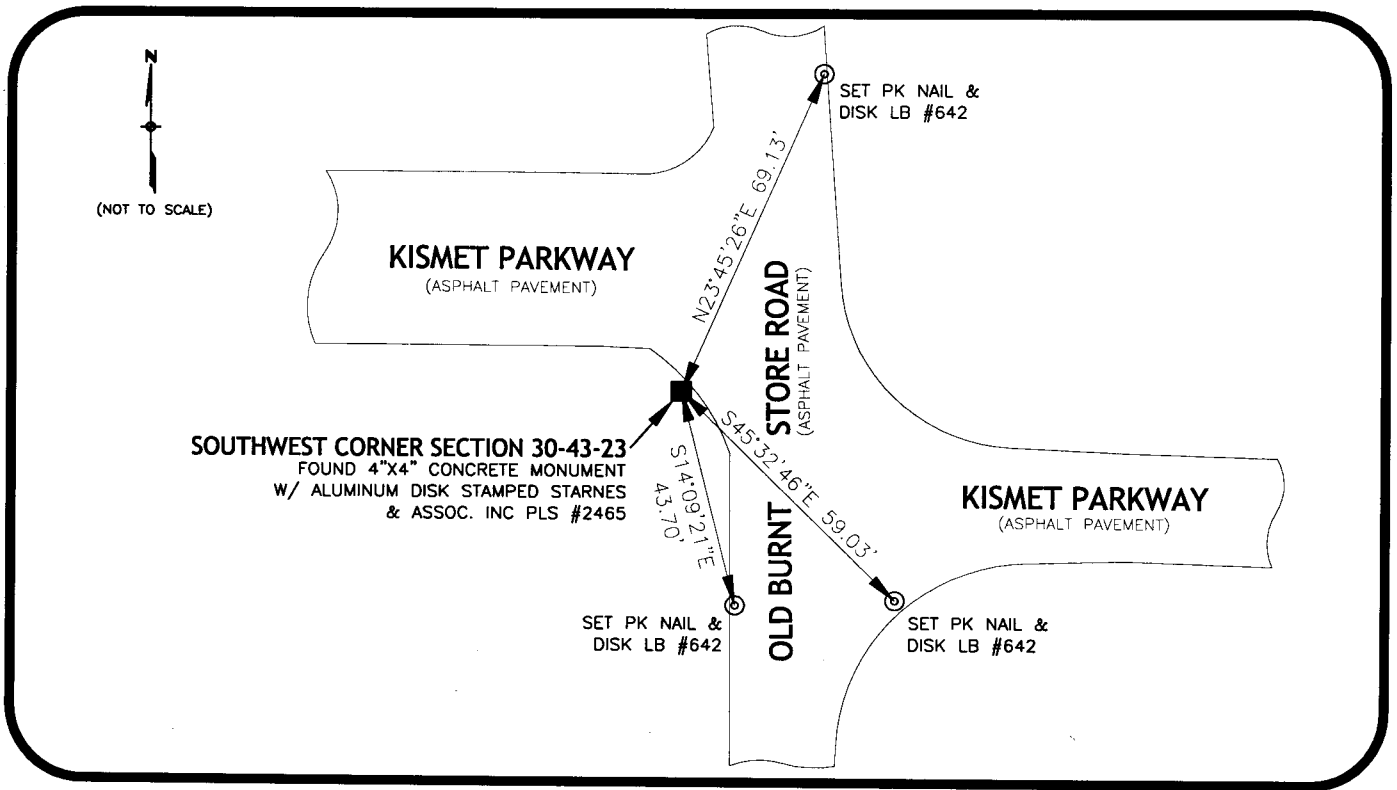
**FOUND 4"x4" CONCRETE MONUMENT W/ ALUMINUM DISK
STAMPED STARNES & ASSOC. INC PLS #2465**



SW corner of Section 30
Twp 43, Rge 23
Tallahassee Base Meridian,
LEE County(s), Florida

HORIZONTAL POSITION INFORMATION (if determined):

Latitude 26° 41' 50.8072" N Longitude 82° 03' 20.3706" W
Y(NORTHING-Ft.) 859197.59 X(EASTING-Ft.) 637994.92 Zone FL W
Convergence -00° 01' 30.022" Scale factor 0.999941555
Coordinate determination (circle one): Field traverse (GPS)
Horizontal datum (circle one): NAD27 NAD83(1986) (NAD83(1990)) other (explain)
Accuracy (circle one): 1st (2nd) 3rd other _____



SURVEYORS CERTIFICATE:

I certify the monument and accessories indicated above were field located on 04/02/08

Robert Smith
JOHNSON ENGINEERING
 18501 MURDOCK CIRCLE, SUITE 404
 PORT CHARLOTTE, FL 33948
 941-625-9919
 6629 PSM NO.
 642 LB NO.
 05/02/08 DATE

EMBOSSSED SEAL OVER SIGNATURE

SEND ORIGINAL TO:
 Department of Environmental Protection
 Bureau of Surveying and Mapping
 3900 Commonwealth Boulevard
 Mail Station 105
 Tallahassee, Florida 32399

Processed: 08-05-08 JH
 B.L.M. - I.D. 100200
 QUAD - I.D. 2217 matlacha