

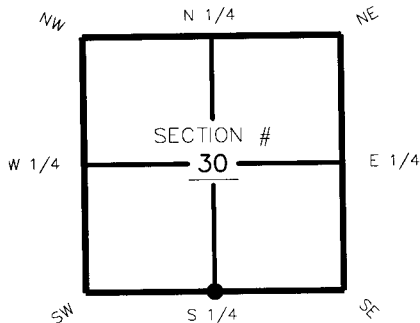
FLORIDA DEPARTMENT OF ENVIRONMENTAL PROTECTION CERTIFIED CORNER RECORD

DOC. # 094776

CORNER DESCRIPTION: MONUMENTATION DESCRIPTION (EVIDENCE FOUND OR METHOD TO SET)

Depict corner with ●

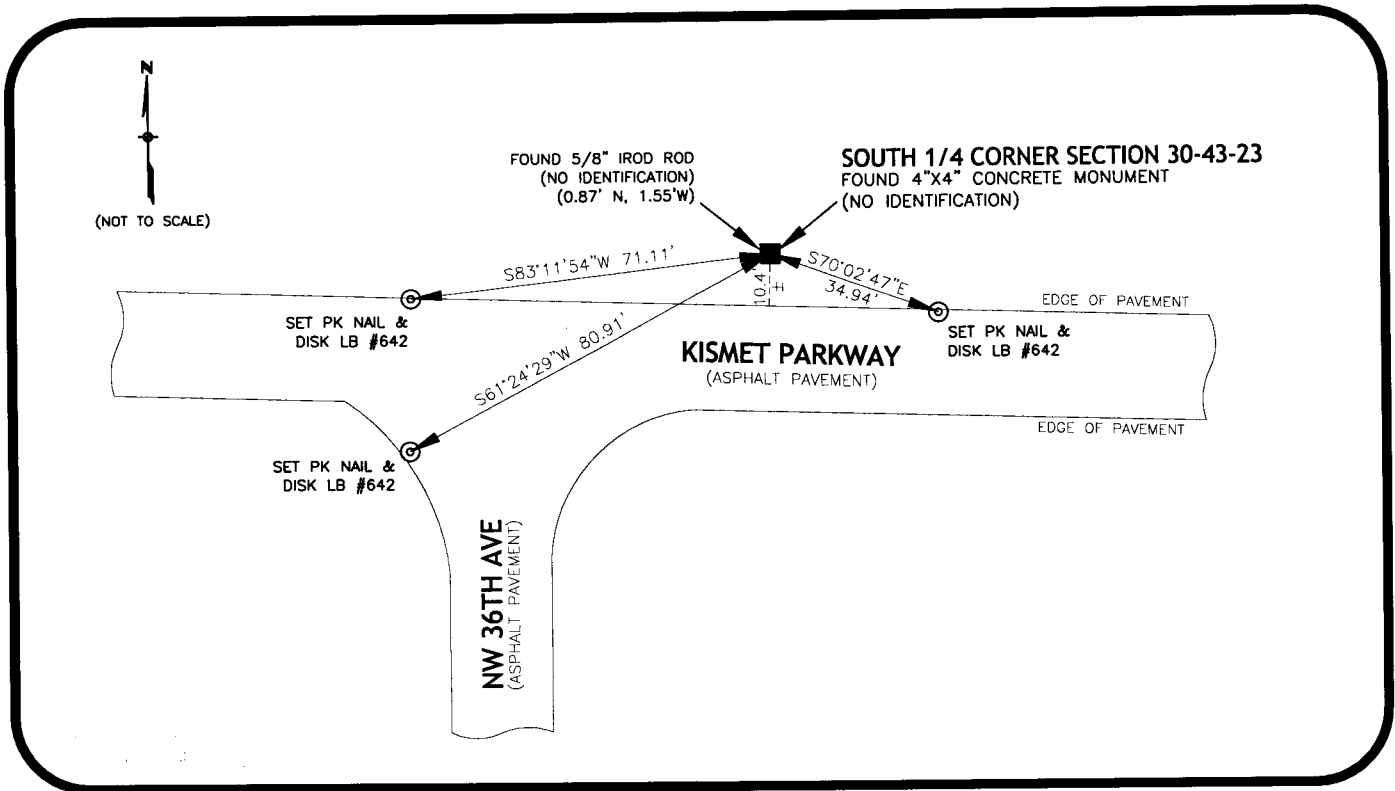
FOUND 4"X4" CONCRETE MONUMENT (NO IDENTIFICATION)



S 1/4 corner of Section 30
Twp 43, Rge 23
Tallahassee Base Meridian,
LEE County(s), Florida

HORIZONTAL POSITION INFORMATION (if determined):

Latitude 26° 41' 49.9702" N Longitude 82° 02' 50.6767" W
Y(NORTHING-Ft.) 859112.00 X(EASTING-Ft.) 640687.84 Zone FL W
Convergence -00° 01' 16.681" Scale factor 0.999941451
Coordinate determination (circle one): Field traverse (GPS)
Horizontal datum (circle one): NAD27 NAD83(1986) (NAD83(1990)) other (explain)
Accuracy (circle one): 1st (2nd) 3rd other _____



SURVEYORS CERTIFICATE:

I certify the monument and accessories indicated above were field located on 04/08/08

SEND ORIGINAL TO:
Department of Environmental Protection
Bureau of Surveying and Mapping
3900 Commonwealth Boulevard
Mail Station 105
Tallahassee, Florida 32399

Randy J. Wilk
JOHNSON ENGINEERING
18501 MURDOCK CIRCLE, SUITE 404
PORT CHARLOTTE, FL 33948
941-625-9910
05/02/08

D.E.P. USE ONLY
 Processed: 08-05-08
 B.L.M. - I.D. 140200
 QUAD - I.D. 2217 matlacha

EMBOSSSED SEAL OVER SIGNATURE