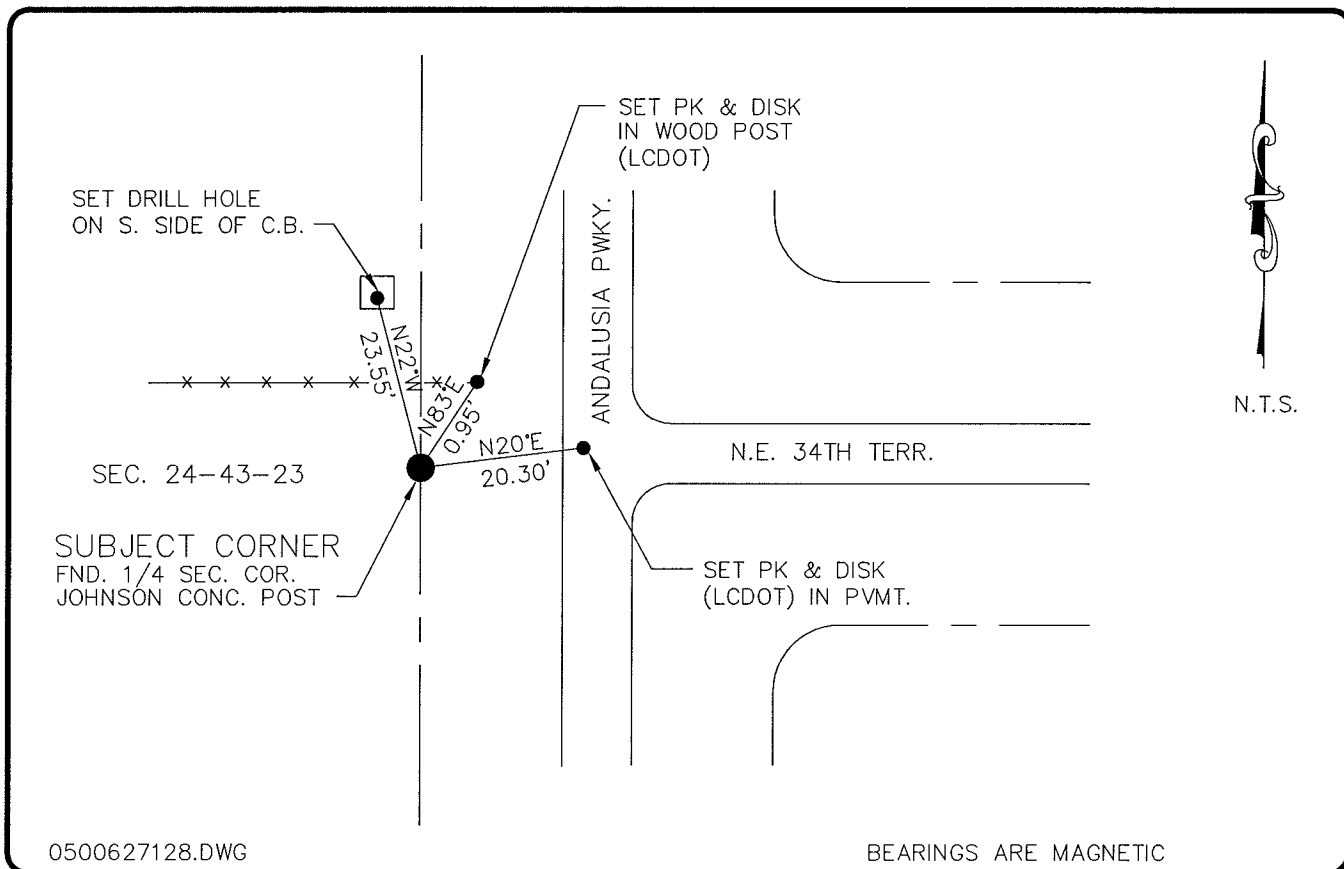


**LAND CORNER RECORD**

**PUBLIC WORKS  
LEE COUNTY, FLORIDA**

Address - 1500 Monroe St., Ft. Myers, Fla. 33901

Phone : (239) 479-8900



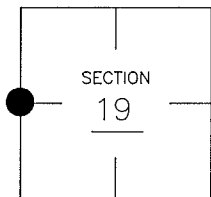
0500627128.DWG

BEARINGS ARE MAGNETIC

**COMMENTS:**

**CORNER DESCRIPTION**

W1/4 Corner  
Section 19  
Township 43  
Range 24



LOCATION OF QUARTER CORNER VERIFIED WITH  
PLAT BOOK 24, PAGE 39.

**HORIZONTAL POSITION INFORMATION**

Florida West Zone, NAD 1983(1990 Adjustment)  
Northing(ft) 867043.71 Easting(ft) 670080.97  
Latitude 26°43'08.530900" Longitude 81°57'26.545152"  
Scale Factor 0.99994139

**EXISTING CERTIFIED CORNER RECORDS**

Document No.	Date
<u>68483</u>	<u>3-19-97</u>

The above documents are based on FDEP Bureau of Surveying and Mapping Record Information.

I hereby certify the monument and accessories shown above were field located on 5-26-05.

*(Signature)*  
Arthur W. Parsons, County Surveyor  
Professional Surveyor and Mapper  
Florida Certificate No. 2987  
Date Signed 1-17-06  
Lee County Department of Transportation  
1500 Monroe Street  
Fort Myers, Florida 33901  
Phone: (239) 479-8900

POINT NO. 315

BLM REFERENCE NO. T43SR24E100340