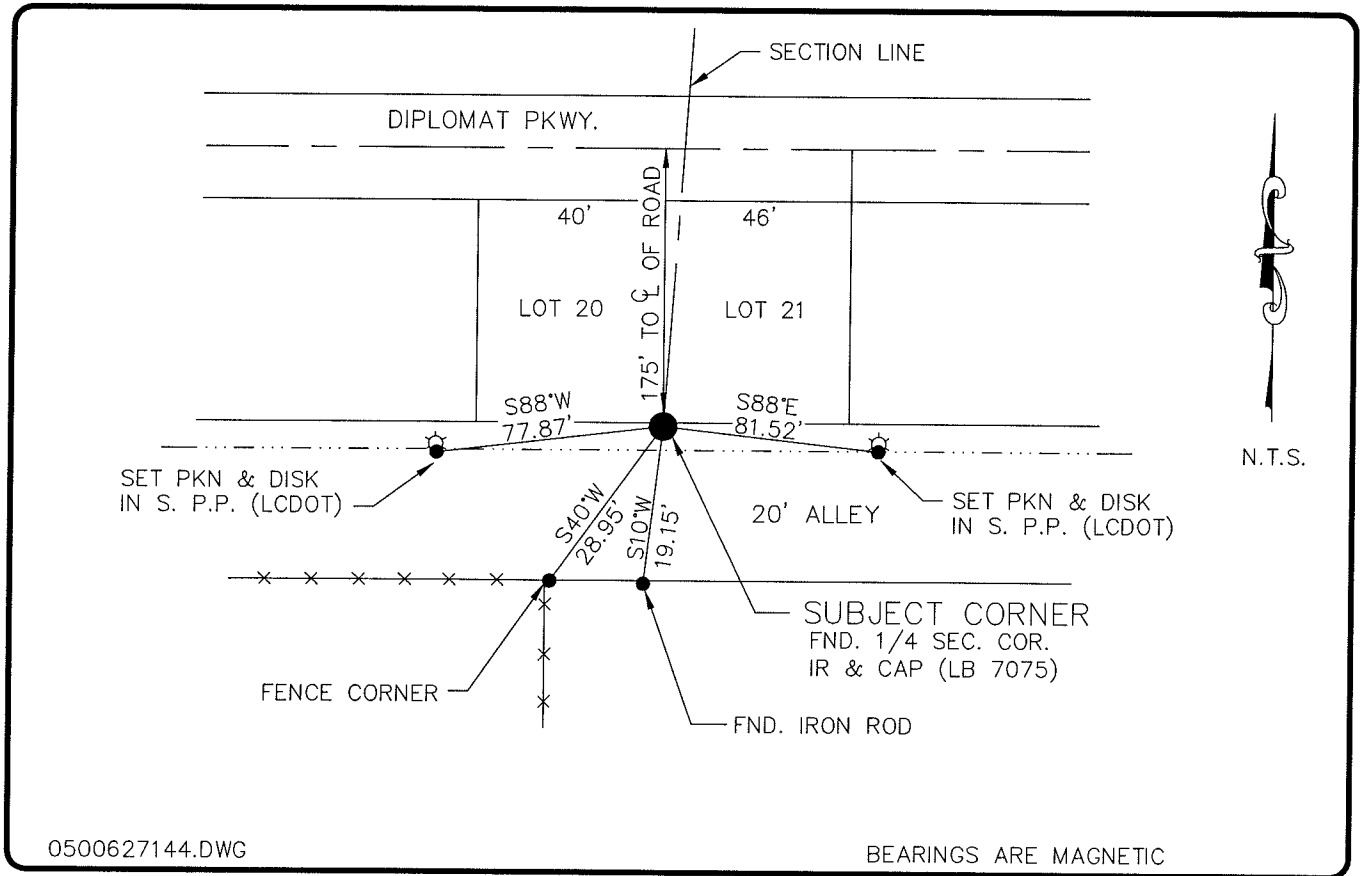


**LAND CORNER RECORD**

**PUBLIC WORKS  
LEE COUNTY, FLORIDA**

Address - 1500 Monroe St., Ft. Myers, Fla. 33901

Phone : (239) 479-8900

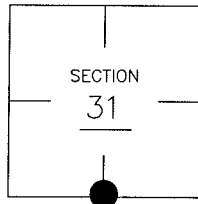


**COMMENTS:**

QUARTER CORNER IS AT THE SOUTHEAST CORNER OF LOT 20, BLOCK 2095, P.B. 16, PAGE 3 "CAPE CORAL".

**CORNER DESCRIPTION**

S1/4 Corner  
Section 31  
Township 43  
Range 24



**HORIZONTAL POSITION INFORMATION**

Florida West Zone, NAD 1983(1990 Adjustment)  
 Northing(ft) 853650.28      Easting(ft) 672677.47  
 Latitude 26°40'55.873604"      Longitude 81°56'57.968055"  
 Scale Factor 0.99994148

**EXISTING CERTIFIED CORNER RECORDS**

Document No.	Date
NONE FOUND	

The above documents are based on FDEP Bureau of Surveying and Mapping Record Information.

I hereby certify the monument and accessories shown above were field located on 8-16-05.

Arthur W. Parsons, County Surveyor  
 Professional Surveyor and Mapper  
 Florida Certificate No. 2987  
 Date Signed 1-17-06

Lee County Department of Transportation  
 1500 Monroe Street  
 Fort Myers, Florida 33901  
 Phone: (239) 479-8900

POINT NO. 348

BLM REFERENCE NO. T43SR24E140100