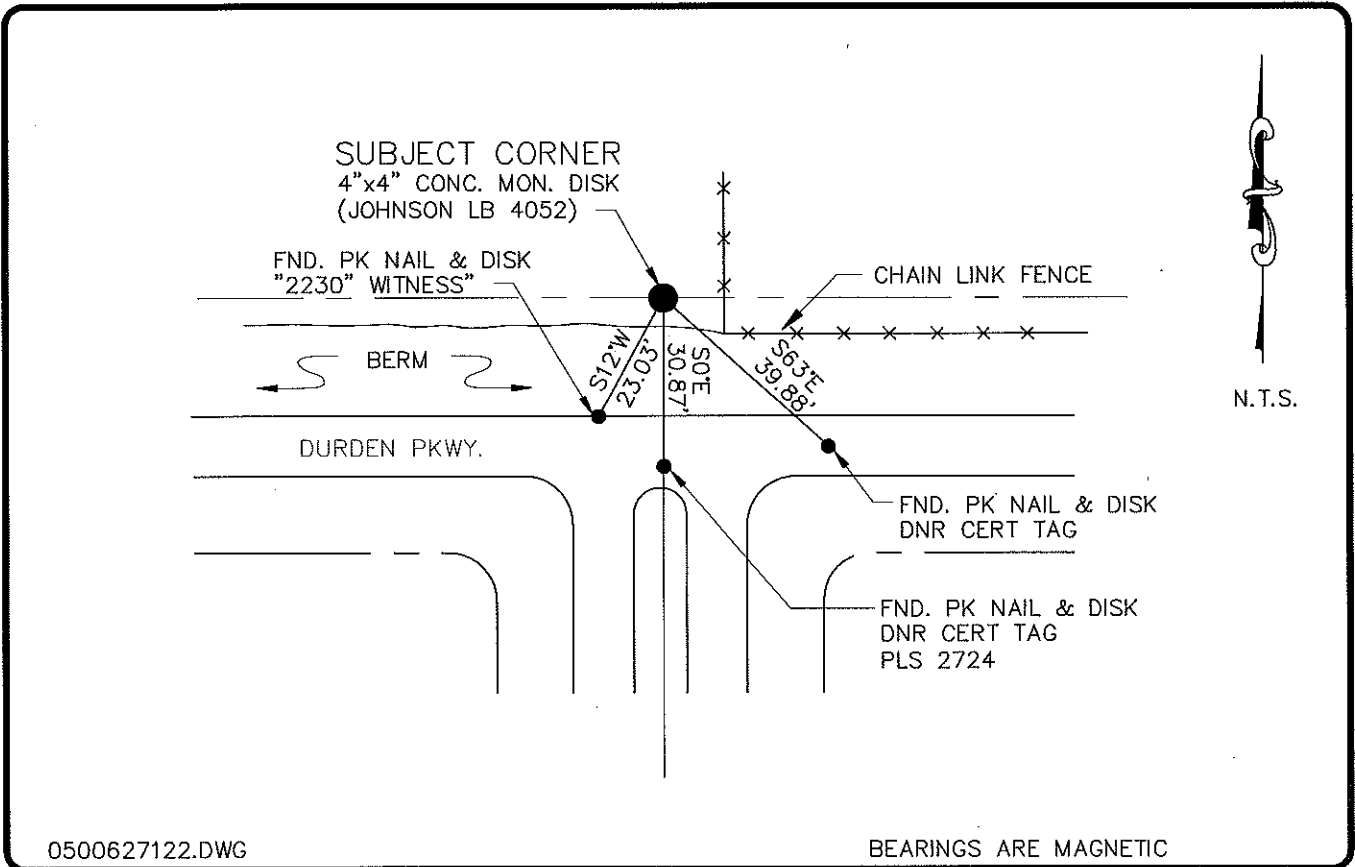


LAND CORNER RECORD

PUBLIC WORKS  
LEE COUNTY, FLORIDA

Address - 1500 Monroe St., Ft. Myers, Fla. 33901

Phone : (239) 479-8900



0500627122.DWG

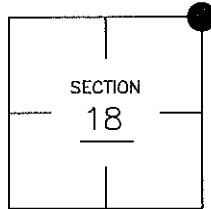
BEARINGS ARE MAGNETIC

COMMENTS:

CORNER DESCRIPTION

CONCRETE MONUMENT FOUND AT SECTION CORNER  
CONFIRMED BY C.C.R. REFERENCE TIES.

NE Corner  
Section 18  
Township 43  
Range 24



HORIZONTAL POSITION INFORMATION

Florida West Zone, NAD 1983(1990 Adjustment)  
Northing(ft) 874891.18 Easting(ft) 675679.77  
Latitude 26°44'26.229258" Longitude 81°56'24.757806"  
Scale Factor 0.99994161

EXISTING CERTIFIED CORNER RECORDS

Document No.	Date
<u>19008</u>	<u>5-24-84</u>
<u>33701</u>	<u>9-14-89</u>
<u>50375</u>	<u>8-22-94</u>
_____	_____
_____	_____

The above documents are based on FDEP Bureau of Surveying and Mapping Record Information.

I hereby certify the monument and accessories shown above were field located on 6-21-05.

\_\_\_\_\_  
Arthur W. Parsons, County Surveyor  
Professional Surveyor and Mapper  
Florida Certificate No. 2987  
Date Signed \_\_\_\_\_

Lee County Department of Transportation  
1500 Monroe Street  
Fort Myers, Florida 33901  
Phone: (239) 479-8900

POINT NO. 323

BLM REFERENCE NO. T43SR24E200500