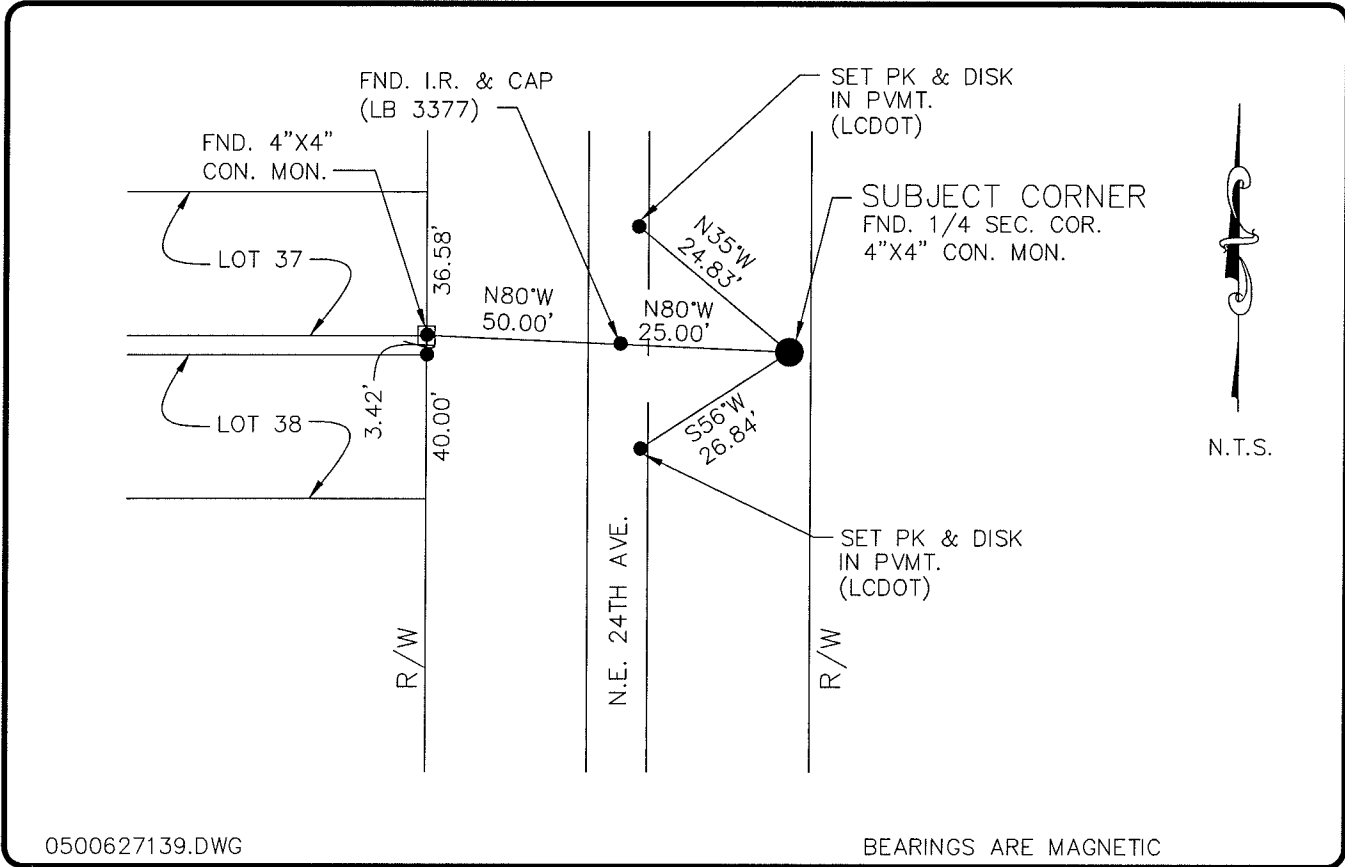


LAND CORNER RECORD

**PUBLIC WORKS
LEE COUNTY, FLORIDA**

Address - 1500 Monroe St., Ft. Myers, Fla. 33901

Phone : (239) 479-8900



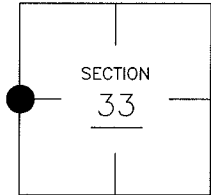
0500627139.DWG

BEARINGS ARE MAGNETIC

COMMENTS:

CORNER DESCRIPTION

W1/4 Corner
Section 33
Township 43
Range 24



SECTION CORNER MONUMENT MATCHES CORNER COMMON TO LOT 37 AND 38 SHOWING THE NORTH EAST CORNER OF LOT 38 BLOCK 2237 P.B. 16, PAGE 52 AS 3.42' SOUTH OF SECTION LINE.

HORIZONTAL POSITION INFORMATION

Florida West Zone, NAD 1983(1990 Adjustment)
 Northing(ft) 856321.35 Easting(ft) 680688.93
 Latitude 26°41'22.288725" Longitude 81°55'29.624261"
 Scale Factor 0.99994186

EXISTING CERTIFIED CORNER RECORDS

Document No.	Date
<u>26249</u>	<u>7-10-87</u>

The above documents are based on FDEP Bureau of Surveying and Mapping Record Information.

I hereby certify the monument and accessories shown above were field located on 5-25-05.

(Signature)
 Arthur W. Parsons, County Surveyor
 Professional Surveyor and Mapper
 Florida Certificate No. 2987
 Date Signed 1-17-06

Lee County Department of Transportation
 1500 Monroe Street
 Fort Myers, Florida 33901
 Phone: (239) 479-8900

POINT NO. 307

BLM REFERENCE NO. T43SR24E300140