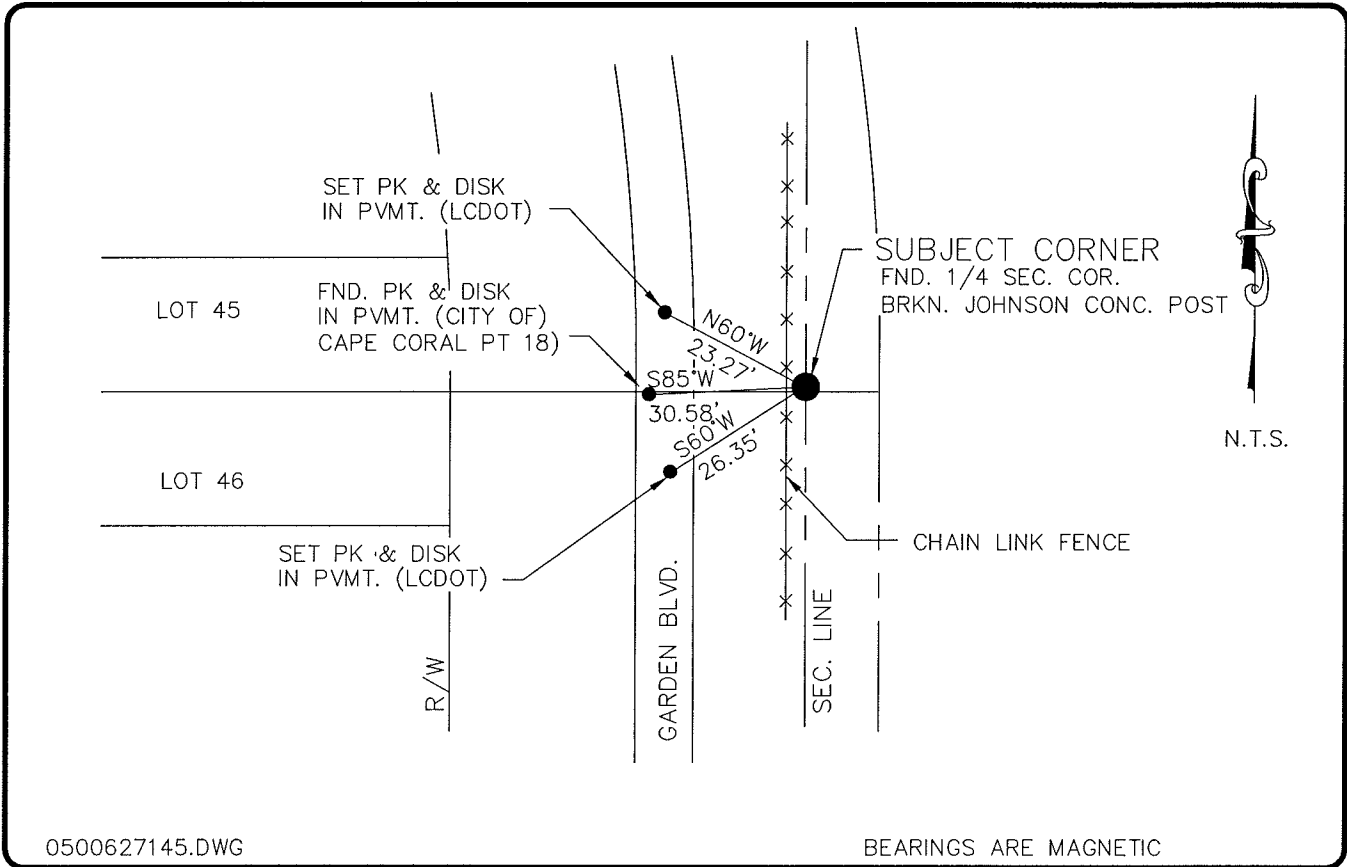


LAND CORNER RECORD

**PUBLIC WORKS
LEE COUNTY, FLORIDA**

Address - 1500 Monroe St., Ft. Myers, Fla. 33901

Phone : (239) 479-8900



0500627145.DWG

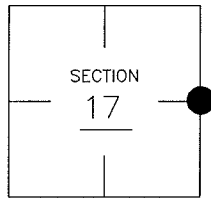
BEARINGS ARE MAGNETIC

COMMENTS:

QUARTER CORNER ACCEPTED ACCORDING TO REFERENCE PLAT CAPE CORAL UNIT 88.

CORNER DESCRIPTION

E1/4 Corner
Section 17
Township 43
Range 24



HORIZONTAL POSITION INFORMATION

Florida West Zone, NAD 1983(1990 Adjustment)
Northing(ft) 872232.56 Easting(ft) 680692.56
Latitude 26°43'59.872254" Longitude 81°55'29.480816"
Scale Factor 0.99994186

EXISTING CERTIFIED CORNER RECORDS

| Document No. | Date |
|--------------|------|
| NONE FOUND | |
| | |
| | |
| | |
| | |

The above documents are based on FDEP Bureau of Surveying and Mapping Record Information.

I hereby certify the monument and accessories shown above were field located on 8-8-05.

Arthur W. Parsons, County Surveyor
Professional Surveyor and Mapper
Florida Certificate No. 2987
Date Signed 1-17-06

Lee County Department of Transportation
1500 Monroe Street
Fort Myers, Florida 33901
Phone: (239) 479-8900

POINT NO. 338

BLM REFERENCE NO. T43SR24E300440