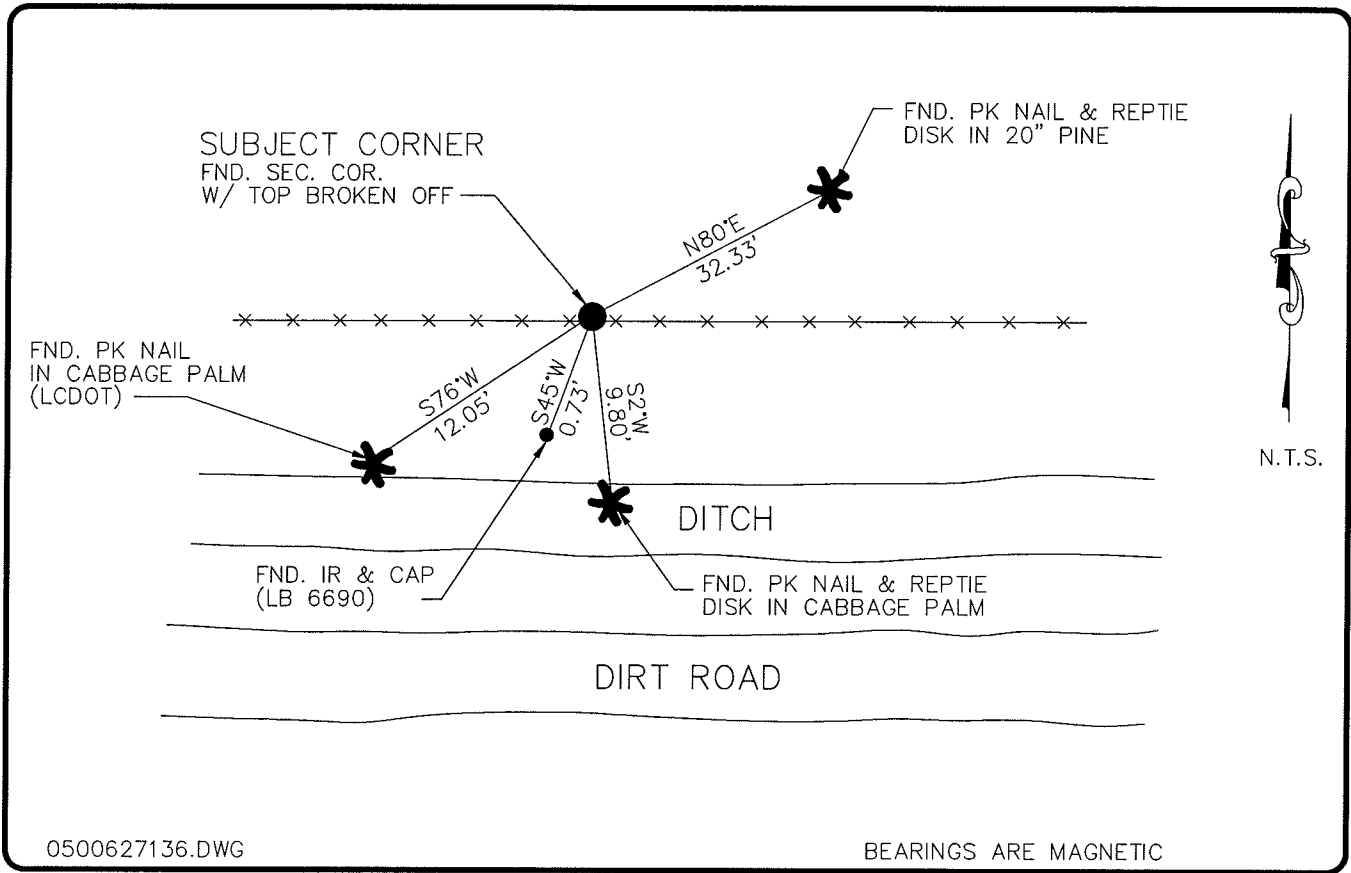


**LAND CORNER RECORD**

**PUBLIC WORKS  
LEE COUNTY, FLORIDA**

Address - 1500 Monroe St., Ft. Myers, Fla. 33901

Phone : (239) 479-8900



0500627136.DWG

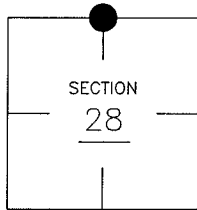
BEARINGS ARE MAGNETIC

**COMMENTS:**

**CORNER DESCRIPTION**

CONFIRMED CORNER LOCATION WITH C.C.R. TIES, LOCALLY ACCEPTED AS QUARTER CORNER.

N1/4 Corner  
Section 28  
Township 43  
Range 24



**HORIZONTAL POSITION INFORMATION**

Florida West Zone, NAD 1983(1990 Adjustment)  
 Northing(ft) 864310.03 Easting(ft) 683645.66  
 Latitude 26°42'41.389896" Longitude 81°54'56.966051"  
 Scale Factor 0.99994204

**EXISTING CERTIFIED CORNER RECORDS**

| Document No. | Date           |
|--------------|----------------|
| <u>35016</u> | <u>4-13-90</u> |
| <u>71596</u> | <u>4-6-01</u>  |
|              |                |
|              |                |
|              |                |

The above documents are based on FDEP Bureau of Surveying and Mapping Record Information.

I hereby certify the monument and accessories shown above were field located on 5-18-05.

*(Signature)*  
**Arthur W. Parsons, County Surveyor**  
 Professional Surveyor and Mapper  
 Florida Certificate No. 2987  
 Date Signed 1-17-06

Lee County Department of Transportation  
 1500 Monroe Street  
 Fort Myers, Florida 33901  
 Phone: (239) 479-8900

POINT NO. 282

BLM REFERENCE NO. T43SR24E340300