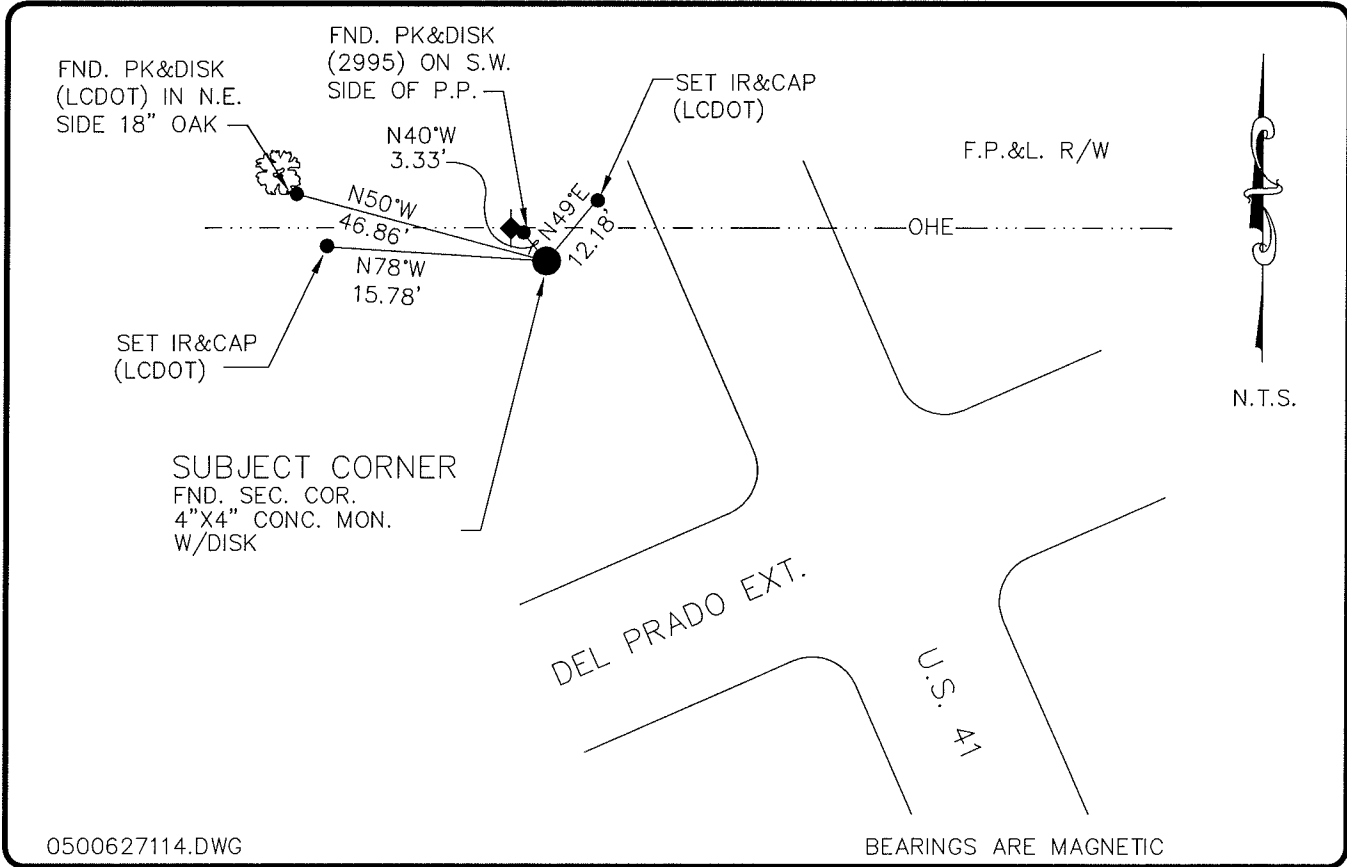


LAND CORNER RECORD

**PUBLIC WORKS
LEE COUNTY, FLORIDA**

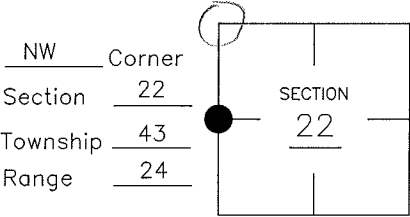
Address - 1500 Monroe St., Ft. Myers, Fla. 33901

Phone : (239) 479-8900



COMMENTS:

CORNER DESCRIPTION



LOCALLY ACCEPTED AS QUARTER CORNER.

HORIZONTAL POSITION INFORMATION

Florida West Zone, NAD 1983(1990 Adjustment)
 Northing(ft) 869591.30 Easting(ft) 686346.63
 Latitude 26°43'33.676628" Longitude 81°54'27.137957"
 Scale Factor 0.99994222

EXISTING CERTIFIED CORNER RECORDS

Document No.	Date
<u>8851</u>	<u>12-15-80</u>
<u>68989</u>	<u>6-3-00</u>

I hereby certify the monument and accessories shown above were field located on 5-2-05.

Arthur W. Parsons, County Surveyor
 Professional Surveyor and Mapper
 Florida Certificate No. 2987
 Date Signed 1-17-06

The above documents are based on FDEP Bureau of Surveying and Mapping Record Information.

Lee County Department of Transportation
 1500 Monroe Street
 Fort Myers, Florida 33901
 Phone: (239) 479-8900

POINT NO. 263

BLM REFERENCE NO. T43SR24E400400