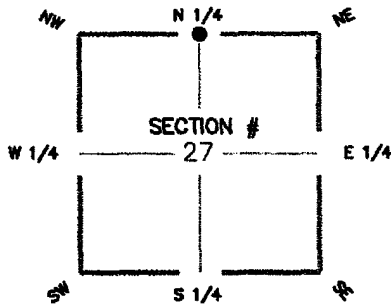


**FLORIDA DEPARTMENT OF ENVIRONMENTAL PROTECTION  
CERTIFIED CORNER RECORD**

093413

DOC. # \_\_\_\_\_

CORNER DESCRIPTION:      MONUMENTATION DESCRIPTION (EVIDENCE FOUND OR METHOD TO SET)



FOUND 3/4" IRON PIPE IN A 4" X 4" CONCRETE MONUMENT WITH A 3" BRASS DISK STAMPED "22 TWP 43 S." 27 RGE 24 E.

RECORD FILED TO SHOW NEW REFERENCES TO SECTION CORNER ON CERTIFIED CORNER RECORD, DOCUMENT #65331.

HORIZONTAL POSITION INFORMATION

Latitude \_\_\_\_\_ Longitude \_\_\_\_\_

Y(NORTHING-Ft.) 864295.096 X(EASTING-Ft.) 688960.830 Zone FL-W

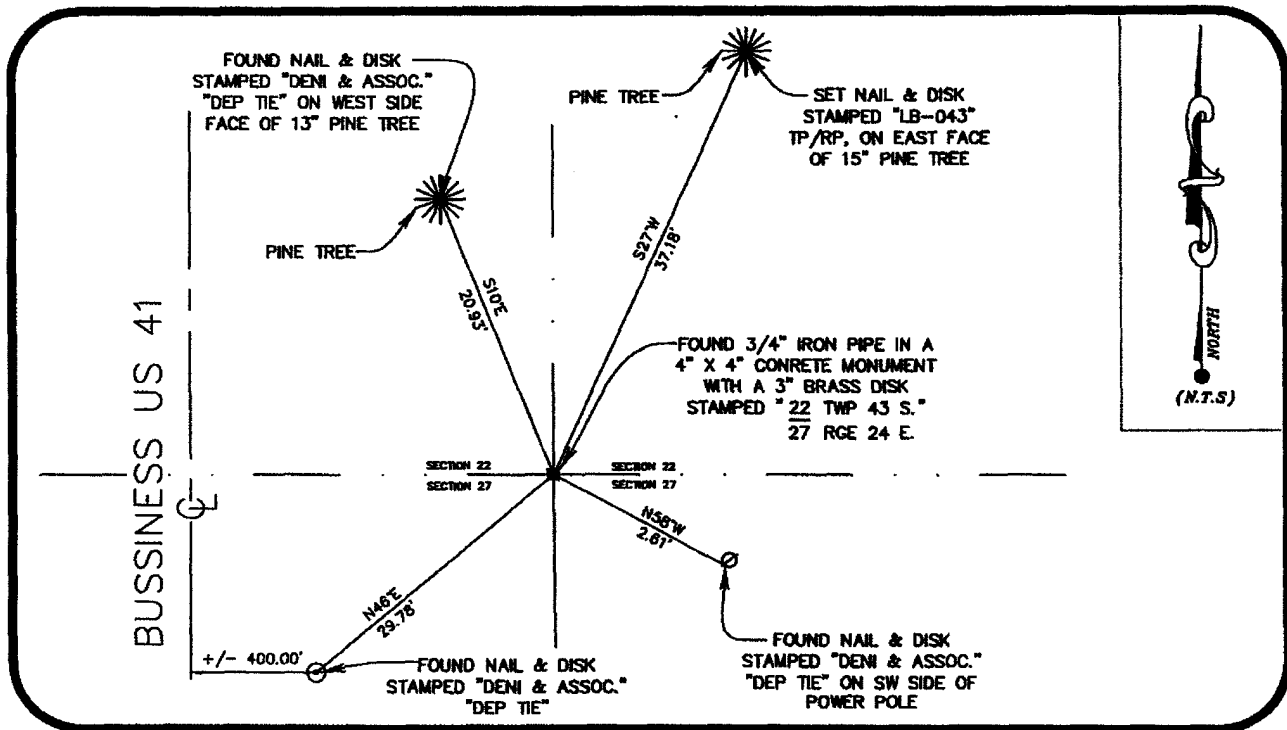
Convergence \_\_\_\_\_ Scale factor \_\_\_\_\_

Coordinate determination (circle one):      Field traverse (GPS)

Horizontal datum (circle one):      NAD27      NAD83(1986)      NAD83(1990)      other (explain)

Accuracy (circle one):      1st      2nd      3rd      other \_\_\_\_\_

N 1/4 corner of Section 27  
Twp. 43 S., Rge 24 E.  
Tallahassee Base Meridian,  
LEE County(s), Florida



SURVEYORS CERTIFICATE:

I certify the monument and accessories indicated above were field located on 05/22/2007

*Perolday* L.S. 5588  
SIGNATURE      PSM NO.  
WILSONMILLER INC.      043  
FIRM OR AGENCY      LB NO.

15438 N. FLORIDA AVE, MAGDALENE CTR. SUITE #200

TAMPA      FLORIDA 33613

(813) 963-0389      01/25/2008  
PHONE NUMBER      DATE

EMBOSSSED SEAL OVER SIGNATURE

SEND ORIGINAL TO:  
Department of Environmental Protection  
Bureau of Surveying and Mapping  
3900 Commonwealth Boulevard  
Mail Station 105  
Tallahassee, Florida 32399

D.E.P. USE ONLY

Processed: 2-25-08 mb

B.L.M. - I.D. 440300

QUAD - I.D. 2216 Fort Myers NW