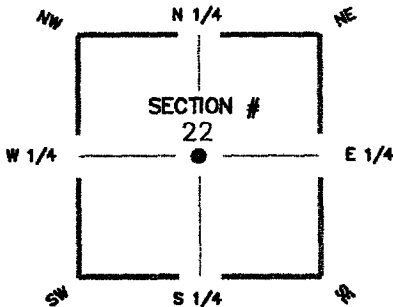


# FLORIDA DEPARTMENT OF ENVIRONMENTAL PROTECTION CERTIFIED CORNER RECORD

DOC. # 093405

CORNER DESCRIPTION: MONUMENTATION DESCRIPTION (EVIDENCE FOUND OR METHOD TO SET)



SET 5/8" CAPPED IRON ROD  
STAMPED "LB-043"  
RECORD FILED TO SHOW NEW  
REFERENCES TO NEW SECTION CORNER  
ON CERTIFIED CORNER RECORD.

HORIZONTAL POSITION INFORMATION

Latitude \_\_\_\_\_ Longitude \_\_\_\_\_  
Y(NORTHING-Ft.) 866944.368 X(EASTING-Ft.) 688973.165 Zone FL-W

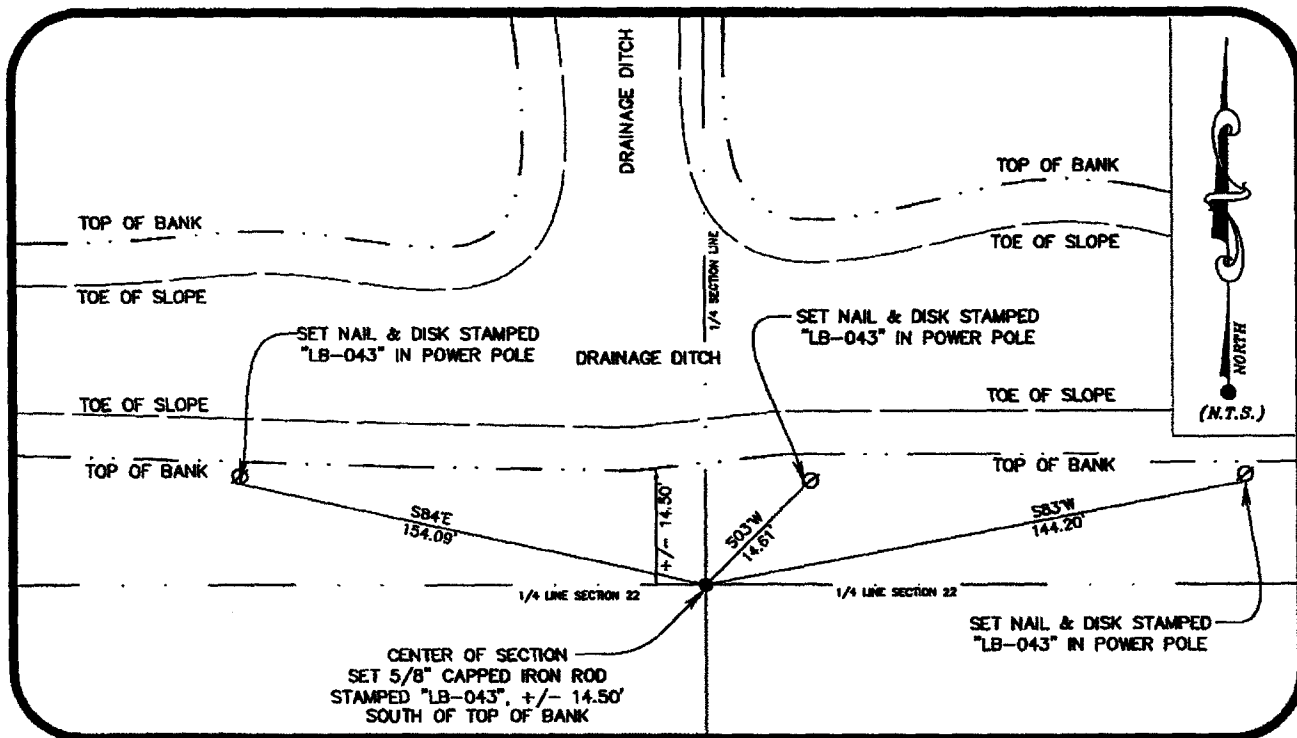
Convergence \_\_\_\_\_ Scale factor \_\_\_\_\_

Coordinate determination (circle one): Field traverse  GPS

Horizontal datum (circle one): NAD27 NAD83(1986)  NAD83(1990) other (explain)

Accuracy (circle one): 1st 2nd  3rd other \_\_\_\_\_

CENTER corner of Section 22  
Twp 43 S. Rge 24 E.  
Tallahassee Base Meridian,  
LEE County(s), Florida



SURVEYORS CERTIFICATE:

I certify the monument and accessories indicated above were field located on 12/06/2007

*[Signature]* L.S. 5588

WILSONMILLER INC. FSM NO. 043

15438 N. FLORIDA AVE. MAGDALENE CTR. SUITE #200

TAMPA FLORIDA 33613

(813) 963-0389 01/25/2008

EMBOSSSED SEAL OVER SIGNATURE

SEND ORIGINAL TO:  
Department of Environmental Protection  
Bureau of Surveying and Mapping  
390D Commonwealth Boulevard  
Mail Station 105  
Tallahassee, Florida 32399

D.E.P. USE ONLY

Processed: 2-23-08 MB

B.L.M. - I.D. 440340

QUAD - I.D. 3216 Ft. Myers NW