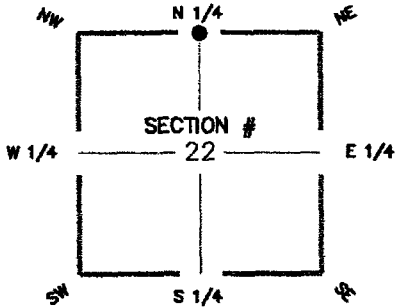


FLORIDA DEPARTMENT OF ENVIRONMENTAL PROTECTION CERTIFIED CORNER RECORD

093401

DOC. # _____

CORNER DESCRIPTION: MONUMENTATION DESCRIPTION (EVIDENCE FOUND OR METHOD TO SET)



SET 5/8" CAPPED IRON ROD STAMPED "LB-043".
RECORD FILED TO SHOW NEW REFERENCES TO NEW SECTION CORNER ON CERTIFIED CORNER RECORD.

HORIZONTAL POSITION INFORMATION

Latitude _____ Longitude _____
Y(NORTHING-Ft.) 869609.432 X(EASTING-Ft.) 688986.076 Zone FL-W

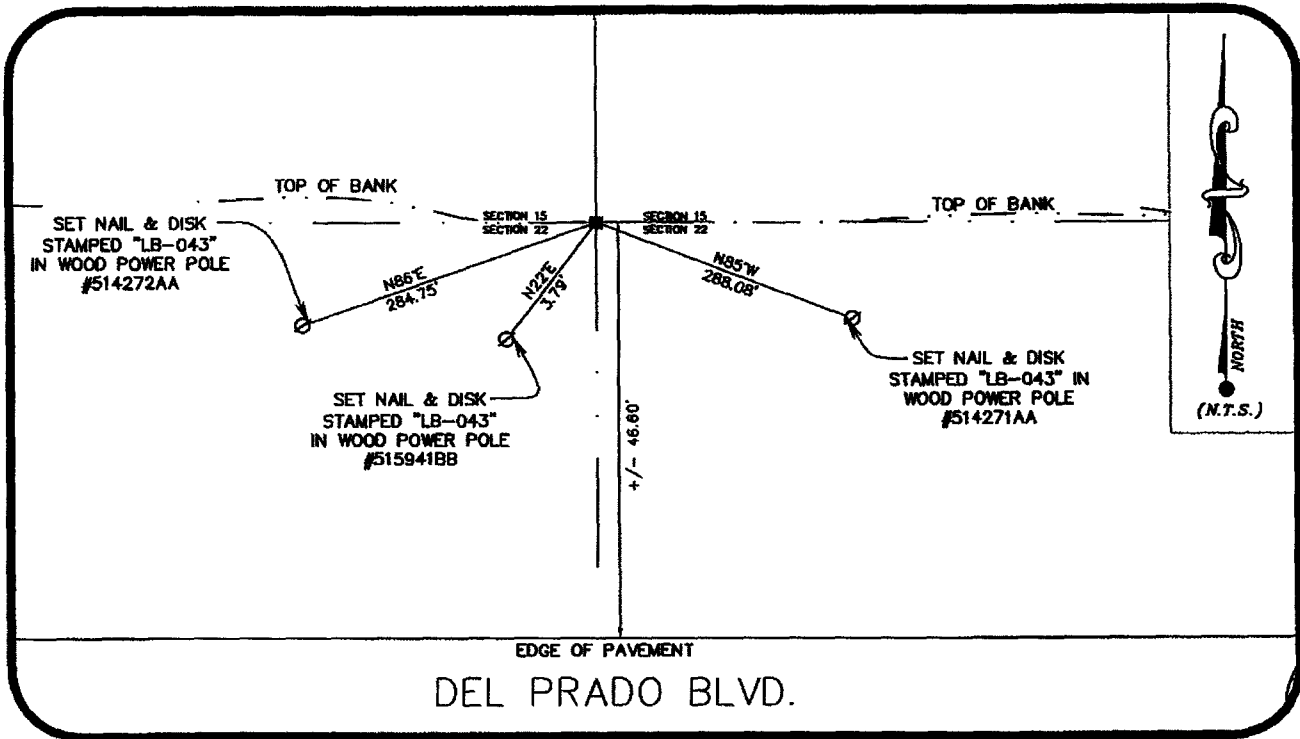
Convergence _____ Scale factor _____

Coordinate determination (circle one): Field traverse GPS

Horizontal datum (circle one): NAD27 NAD83(1986) NAD83(1990) other (explain)

Accuracy (circle one): 1st 2nd 3rd other _____

N1/4 corner of Section 22
Twp. 43 S. Rge 24 E.
Tallahassee Base Meridian,
LEE County(s), Florida



SURVEYORS CERTIFICATE:

I certify the monument and accessories indicated above were field located on 12/06/2007

P. P. P. P. L.S. 5588

WILSONMILLER INC. PSM NO. 043

15438 N. FLORIDA AVE. MAGDALENE CTR. SUITE #200

TAMPA FLORIDA 33613

(813) 963-8389 01/25/2008

EMBOSSSED SEAL OVER SIGNATURE

SEND ORIGINAL TO:
Department of Environmental Protection
Bureau of Surveying and Mapping
3900 Commonwealth Boulevard
Mail Station 105
Tallahassee, Florida 32399

Processed:	<u>2 23 08</u>	D.E.P. USE ONLY	<u>118</u>
B.L.M. - I.D.	<u>440400</u>		
QUAD - I.D.	<u>2216 Ft. Myers NW</u>		