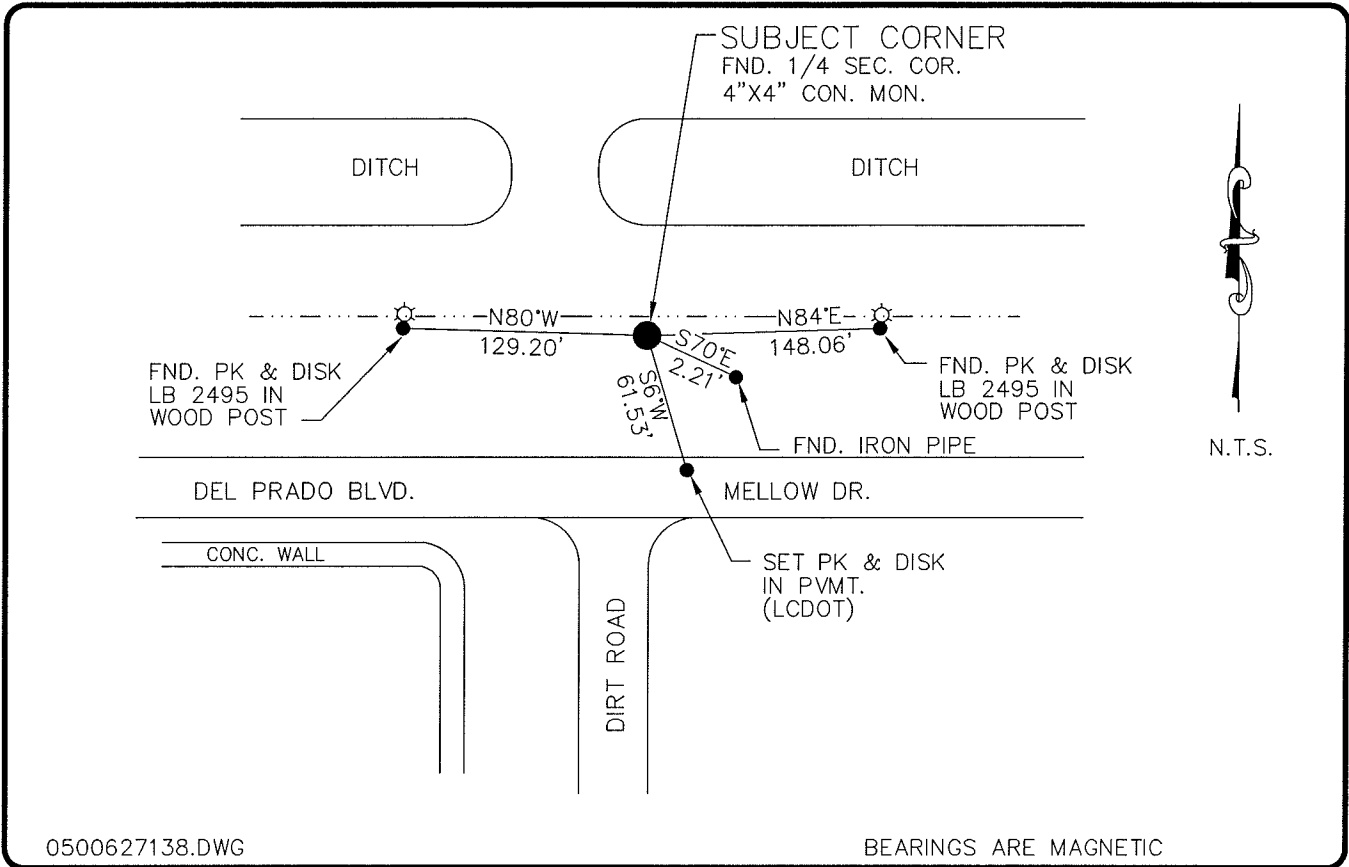


LAND CORNER RECORD

**PUBLIC WORKS
LEE COUNTY, FLORIDA**

Address - 1500 Monroe St., Ft. Myers, Fla. 33901

Phone : (239) 479-8900



0500627138.DWG

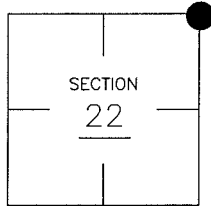
BEARINGS ARE MAGNETIC

COMMENTS:

CONCRETE MONUMENT FOUND WAS SET BY BEN HOMOLA ABOVE A 5/8' IRON ROD FOUND WITH CAP #LB 697.

CORNER DESCRIPTION

NE Corner
Section 22
Township 43
Range 24



HORIZONTAL POSITION INFORMATION

Florida West Zone, NAD 1983(1990 Adjustment)
Northing(ft) 869597.93 Easting(ft) 691626.04
Latitude 26°43'33.701023" Longitude 81°53'28.910095"
Scale Factor 0.99994261

EXISTING CERTIFIED CORNER RECORDS

Document No.	Date
<u>8838</u>	<u>4-15-80</u>
<u>22040</u>	<u>9-24-85</u>
<u>36564</u>	<u>3-17-87</u>
<u>74769</u>	<u>1-30-02</u>

The above documents are based on FDEP Bureau of Surveying and Mapping Record Information.

I hereby certify the monument and accessories shown above were field located on 5-25-05.

Arthur W. Parsons, County Surveyor
Professional Surveyor and Mapper
Florida Certificate No. 2987
Date Signed 1-17-06

Lee County Department of Transportation
1500 Monroe Street
Fort Myers, Florida 33901
Phone: (239) 479-8900

POINT NO. 311

BLM REFERENCE NO. T43SR24E500400