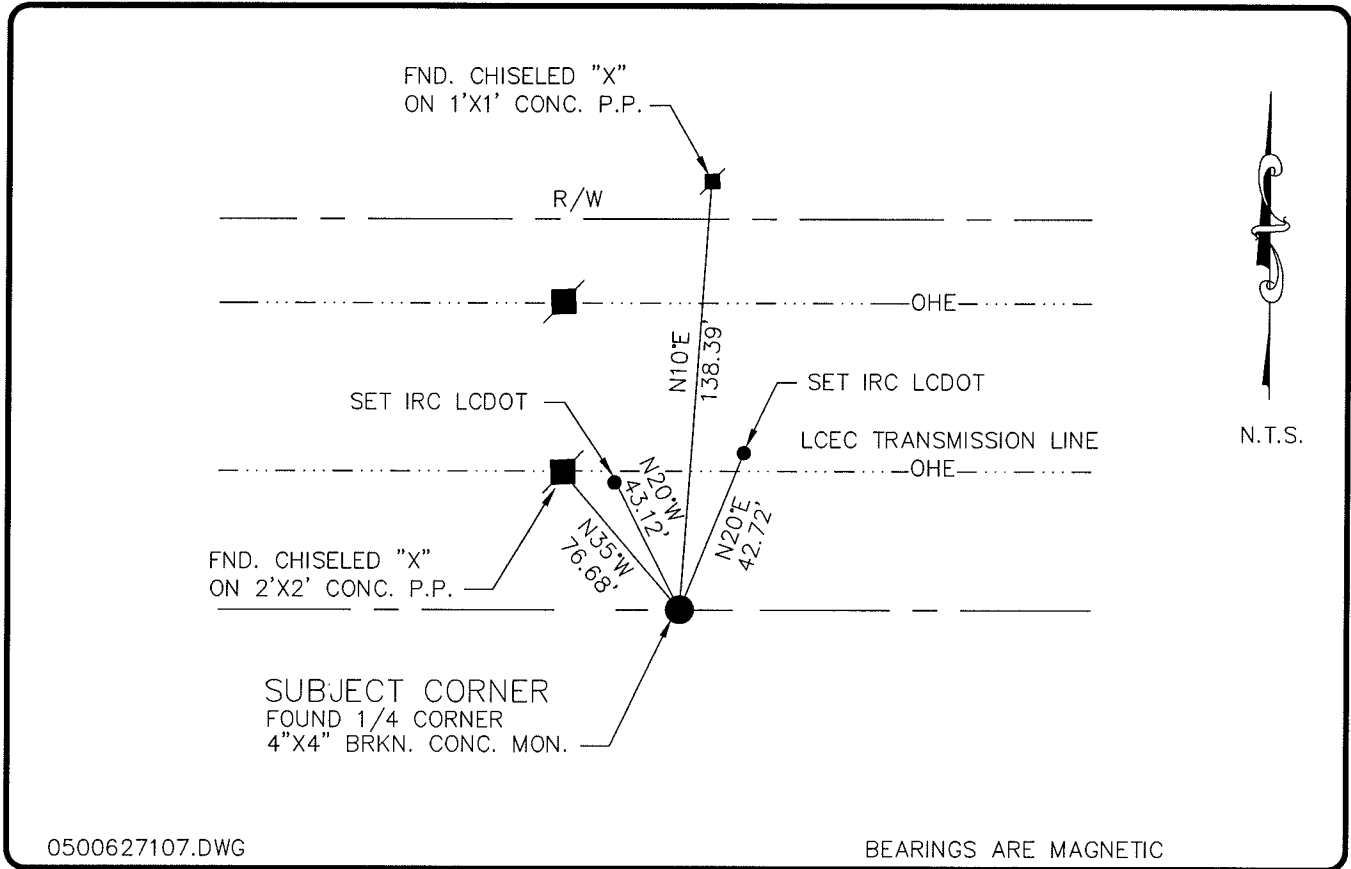


LAND CORNER RECORD

**PUBLIC WORKS
LEE COUNTY, FLORIDA**

Address - 1500 Monroe St., Ft. Myers, Fla. 33901

Phone : (239) 479-8900



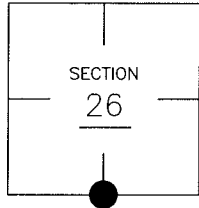
0500627107.DWG

BEARINGS ARE MAGNETIC

COMMENTS:

CORNER DESCRIPTION

S1/4 Corner
Section 26
Township 43
Range 24



CONCRETE MONUMENT FOUND IS SAME AS NOTED ON CCR NO. 65329 AND ALSO SHOWN ON BUCCANEER MOBILE ESTATES AS QUARTER CORNER P.B. 29, PG. 118.

HORIZONTAL POSITION INFORMATION

Florida West Zone, NAD 1983(1990 Adjustment)
 Northing(ft) 858970.92 Easting(ft) 694295.30
 Latitude 26°41'48.428571" Longitude 81°52'59.577620"
 Scale Factor 0.99994284

EXISTING CERTIFIED CORNER RECORDS

Document No.	Date
<u>15270</u>	<u>10-1-82</u>
<u>65329</u>	<u>6-29-99</u>

The above documents are based on FDEP Bureau of Surveying and Mapping Record Information.

I hereby certify the monument and accessories shown above were field located on 9-22-04.

(Signature)
Arthur W. Parsons, County Surveyor
 Professional Surveyor and Mapper
 Florida Certificate No. 2987
 Date Signed 1-17-06

Lee County Department of Transportation
 1500 Monroe Street
 Fort Myers, Florida 33901
 Phone: (239) 479-8900

POINT NO. 244

BLM REFERENCE NO. T43SR24E540200