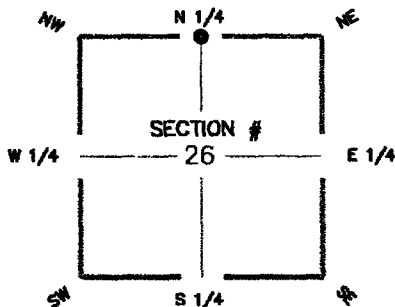


**FLORIDA DEPARTMENT OF ENVIRONMENTAL PROTECTION  
CERTIFIED CORNER RECORD**

**093406**

DOC. # \_\_\_\_\_

CORNER DESCRIPTION:      MONUMENTATION DESCRIPTION (EVIDENCE FOUND OR METHOD TO SET)



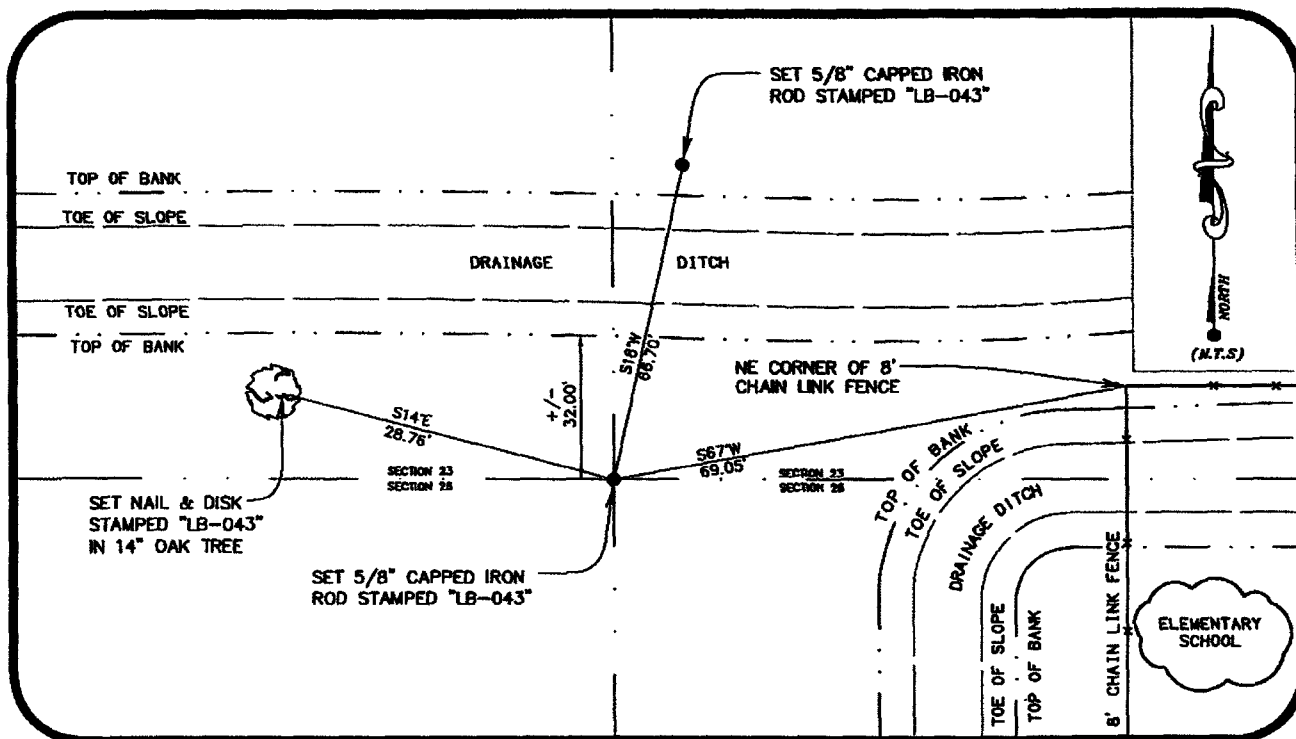
SET 5/8" CAPPED IRON ROD  
STAMPED "LB-043"  
RECORD FILED TO SHOW NEW SET  
SECTION CORNER WITH REFERENCES  
ON CERTIFIED CORNER RECORD.

HORIZONTAL POSITION INFORMATION

Latitude \_\_\_\_\_ Longitude \_\_\_\_\_  
Y(NORTHING-Ft.) 864260.835 X(EASTING-Ft.) 694277.221 Zone FL-W  
Convergence \_\_\_\_\_ Scale factor \_\_\_\_\_

N 1/4 corner of Section 26  
Twp 43 S., Rge 24 E.  
Tallahassee Base Meridian,  
LEE County(s), Florida

Coordinate determination (circle one):      Field traverse (GPS)  
Horizontal datum (circle one): NAD27 NAD83(1986) (NAD83(1990)) other (explain)  
Accuracy (circle one): 1st 2nd (3rd) other \_\_\_\_\_



SURVEYORS CERTIFICATE:

I certify the monument and accessories indicated above were field located on 12/06/2007

*P. P. O'Leary* L.S. 5588  
SIGNATURE      PSM NO.  
WILSON MILLER INC.      043  
FIRM OR AGENCY      LB NO.  
15438 N. FLORIDA AVE. MAGDALENE CTR. SUITE #200  
ADDRESS  
TAMPA      FLORIDA 33613  
CITY      STATE      ZIP  
(813) 963-0389      01/25/2008  
PHONE NUMBER      DATE  
EMBOSSSED SEAL OVER SIGNATURE

SEND ORIGINAL TO:  
Department of Environmental Protection  
Bureau of Surveying and Mapping  
3900 Commonwealth Boulevard  
Mail Station 105  
Tallahassee, Florida 32399

D.E.P. USE ONLY  
Processed: 2-23-08 MB  
B.L.M. - I.D. 540300  
QUAD - I.D. 2216 F.M.YC.V.S. NW