

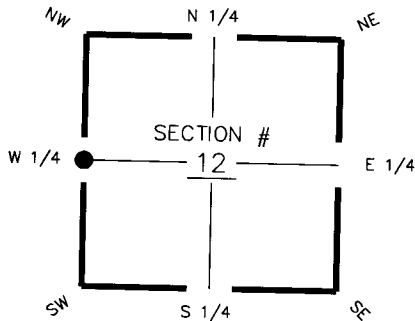
FLORIDA DEPARTMENT OF ENVIRONMENTAL PROTECTION CERTIFIED CORNER RECORD

DOC. # 094423

CORNER DESCRIPTION:

Depict corner with

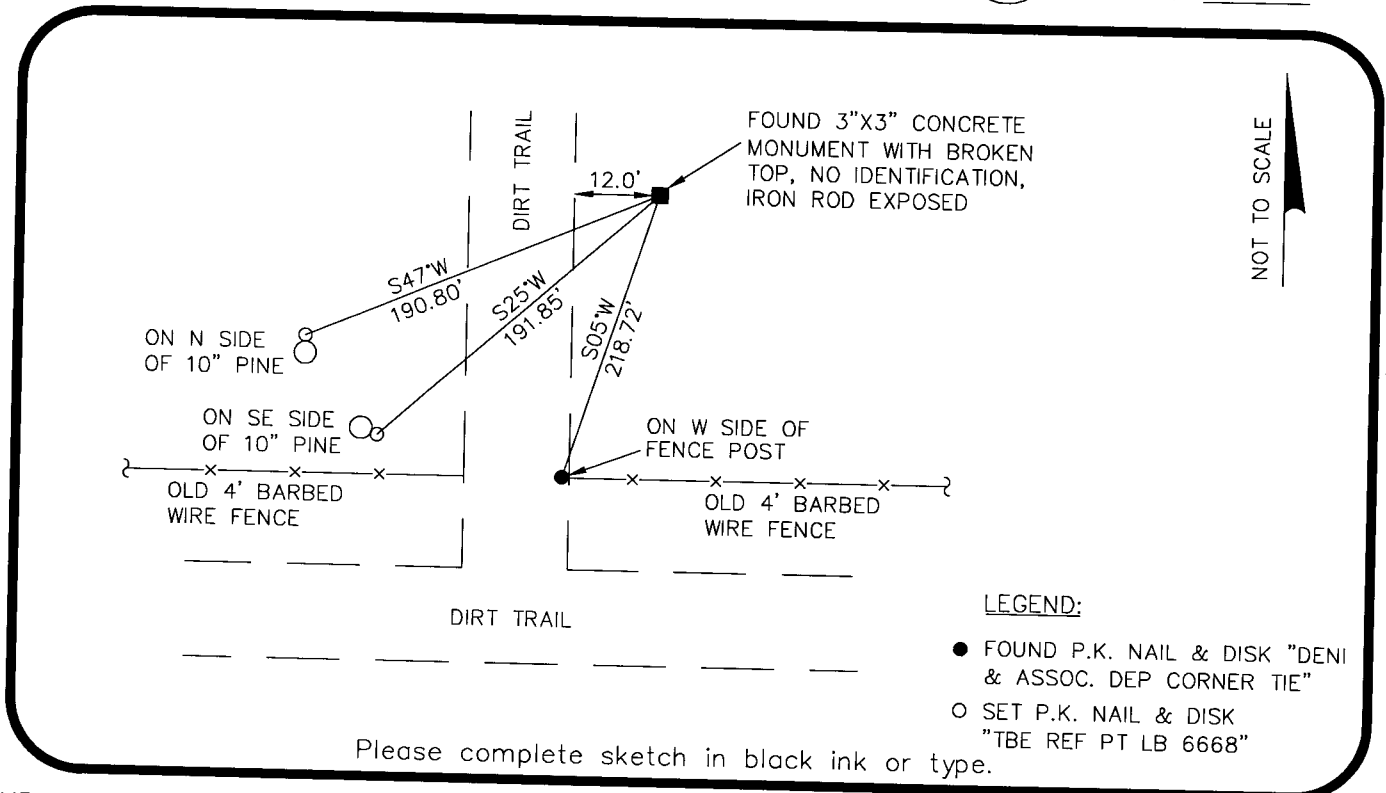
MONUMENTATION DESCRIPTION (EVIDENCE FOUND OR METHOD TO SET)
 FOUND 3"X3" CONCRETE MONUMENT WITH BROKEN TOP, NO IDENTIFICATION, IRON ROD EXPOSED



W 1/4 corner of Section 12
 Twp 43 S, Rge 24 E
 Tallahassee Base Meridian,
 Charlotte County(s), Florida

HORIZONTAL POSITION INFORMATION (if determined):

Latitude 26°44'51.7474" Longitude 81°52'30.9990"
 Y(NORTHING-Ft.) 877,483.115 X(EASTING-Ft.) 696,869.016 Zone FL West
 Convergence 0°03'22.079" Scale factor 0.9999430759
 Coordinate determination (circle one): Field traverse GPS
 Horizontal datum (circle one): NAD27 NAD83(1986) NAD83(1990) other (explain)
 Accuracy (circle one): 1st 2nd 3rd other _____



LEGEND:

- FOUND P.K. NAIL & DISK "DENI & ASSOC. DEP CORNER TIE"
- SET P.K. NAIL & DISK "TBE REF PT LB 6668"

Please complete sketch in black ink or type.

SURVEYORS CERTIFICATE:

I certify the monument and accessories indicated above were field located on 2/7/07

[Signature] 5196
 TBE Group, Inc. PSM NO. 6668
 FIRM OR AGENCY LB NO.
 380 Park Place Blvd, Suite 300
 Clearwater, Florida 33759
 CITY STATE ZIP
 727.531.3505 DATE 05/05/08
 PHONE NUMBER

SEND ORIGINAL TO:
 Department of Environmental Protection
 Bureau of Surveying and Mapping
 3900 Commonwealth Boulevard
 Mail Station 105
 Tallahassee, Florida 32399

Processed: 5-14-08 MB
 B.L.M. - I.D. 600540
 QUAD - I.D. 2215 Fort Myers

EMBOSSSED SEAL OVER SIGNATURE