

FLORIDA DEPARTMENT OF ENVIRONMENTAL PROTECTION CERTIFIED CORNER RECORD

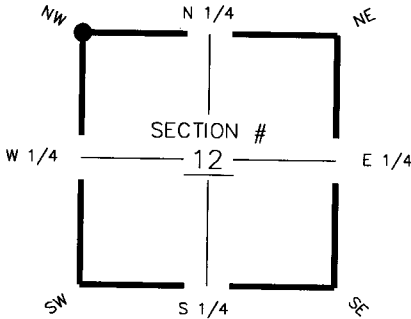
094419

DOC. # _____

CORNER DESCRIPTION:

Depict corner with _____

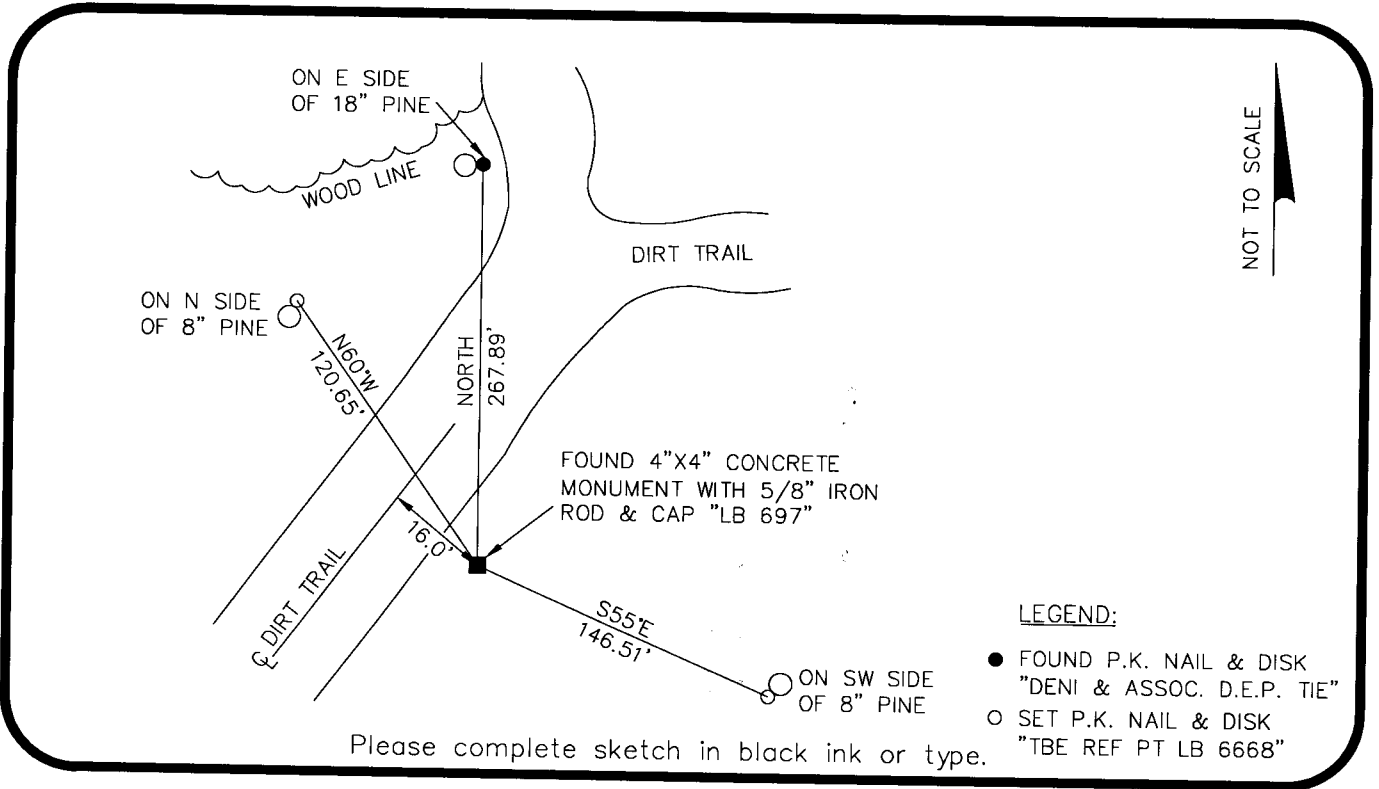
MONUMENTATION DESCRIPTION (EVIDENCE FOUND OR METHOD TO SET)
FOUND 4"x4" CONCRETE MONUMENT WITH 5/8" IRON ROD AND CAP "LB697"



NW corner of Section 12
Twp 43 S, Rge 24 E
Tallahassee Base Meridian,
Charlotte County(s), Florida

HORIZONTAL POSITION INFORMATION (if determined):

Latitude 26°45'18.0653" Longitude 81°52'31.0165"
Y(NORTHING-Ft.) 880,140.442 X(EASTING-Ft.) 696,864.825 Zone FL West
Convergence 0°03'22.122" Scale factor 0.9999430755
Coordinate determination (circle one): Field traverse GPS
Horizontal datum (circle one): NAD27 NAD83(1986) NAD83(1990) other (explain)
Accuracy (circle one): 1st 2nd 3rd other _____



Please complete sketch in black ink or type.

SURVEYORS CERTIFICATE:

I certify the monument and accessories indicated above were field located on 2/6/07

[Signature] 5196
SIGNATURE PSM NO.
TBE Group, Inc. 6668
FIRM OR AGENCY LB NO.
380 Park Place Blvd., Suite 300
ADDRESS
Clearwater, Florida 33759
CITY STATE ZIP
727.531.3505
PHONE NUMBER DATE 05/05/08

SEND ORIGINAL TO:
Department of Environmental Protection
Bureau of Surveying and Mapping
3900 Commonwealth Boulevard
Mail Station 105
Tallahassee, Florida 32399

D.E.P. USE ONLY

Processed: 5-14-08 MB
B.L.M. - I.D. 600600
QUAD - I.D. 2315 TUCKER'S CORNER

EMBOSSSED SEAL OVER SIGNATURE