

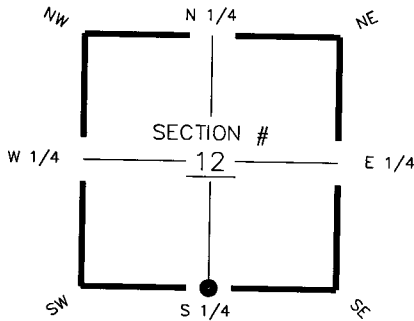
FLORIDA DEPARTMENT OF ENVIRONMENTAL PROTECTION CERTIFIED CORNER RECORD

DOC. # 094421

CORNER DESCRIPTION:

Depict corner with

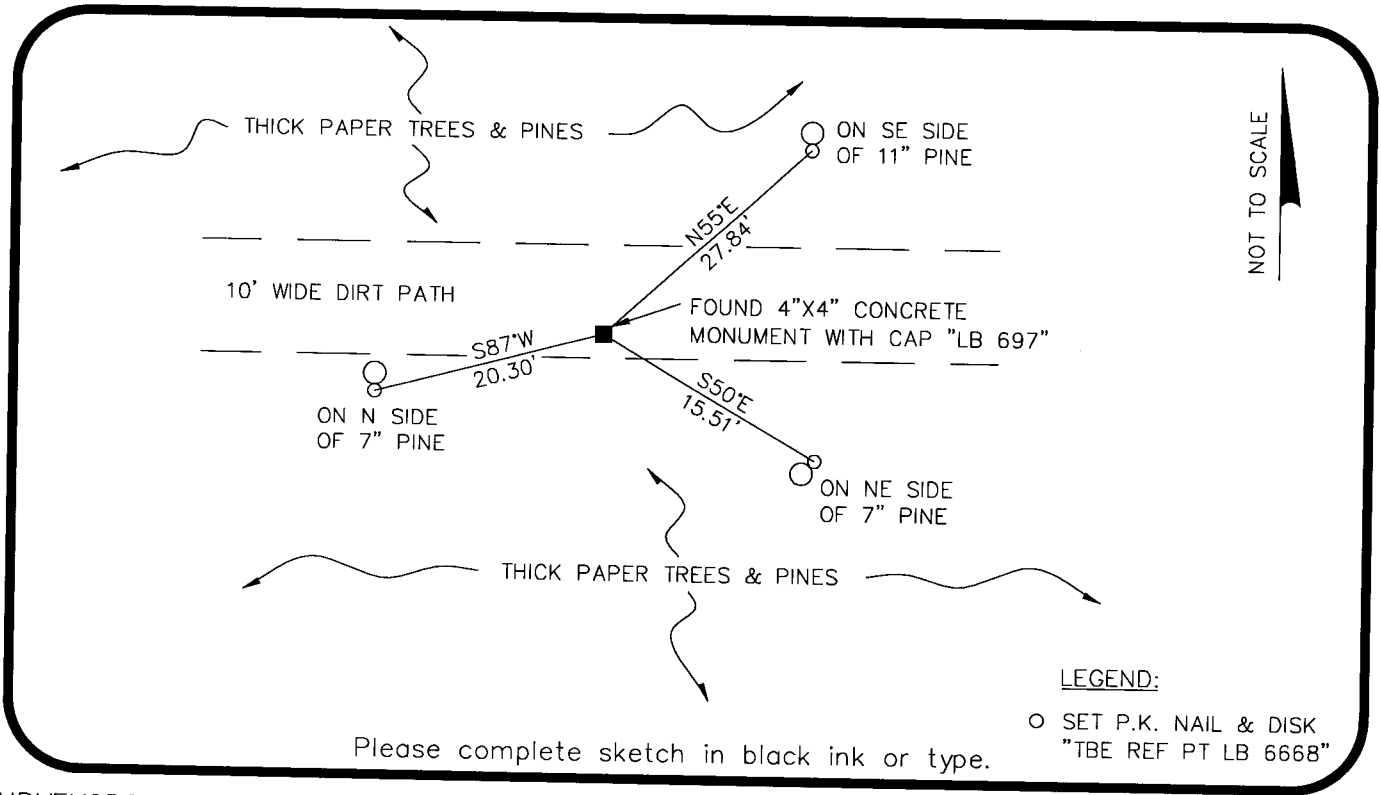
MONUMENTATION DESCRIPTION (EVIDENCE FOUND OR METHOD TO SET)
FOUND 4"x4" CONCRETE MONUMENT WITH CAP "LB697"



S 1/4 corner of Section 12
Twp 43 S, Rge 24 E
Tallahassee Base Meridian,
Charlotte County(s), Florida

HORIZONTAL POSITION INFORMATION (if determined):

Latitude 26°44'25.6763" Longitude 81°52'00.9928"
Y(NORTHING-Ft.) 874,853.451 X(EASTING-Ft.) 699,591.860 Zone FL West
Convergence 0°03'35.530" Scale factor 0.9999433385
Coordinate determination (circle one): Field traverse GPS
Horizontal datum (circle one): NAD27 NAD83(1986) NAD83(1990) other (explain) _____
Accuracy (circle one): 1st 2nd 3rd other _____



Please complete sketch in black ink or type.

SURVEYORS CERTIFICATE:

I certify the monument and accessories indicated above were field located on 2/8/07

SIGNATURE 5196
TBE Group, Inc. PSM NO. 6668
FIRM OR AGENCY LB NO. _____
380 Park Place Blvd., Suite 300 ADDRESS
Clearwater, Florida 33759 CITY STATE ZIP
727.531.3505 PHONE NUMBER DATE 02/08/08
EMBOSSSED SEAL OVER SIGNATURE

SEND ORIGINAL TO:
Department of Environmental Protection
Bureau of Surveying and Mapping
3900 Commonwealth Boulevard
Mail Station 105
Tallahassee, Florida 32399

Processed:	S. REP. USE ONLY <u>MB</u>
B.L.M. - I.D.	<u>640500</u>
QUAD - I.D.	<u>2215 Fort Myers</u>