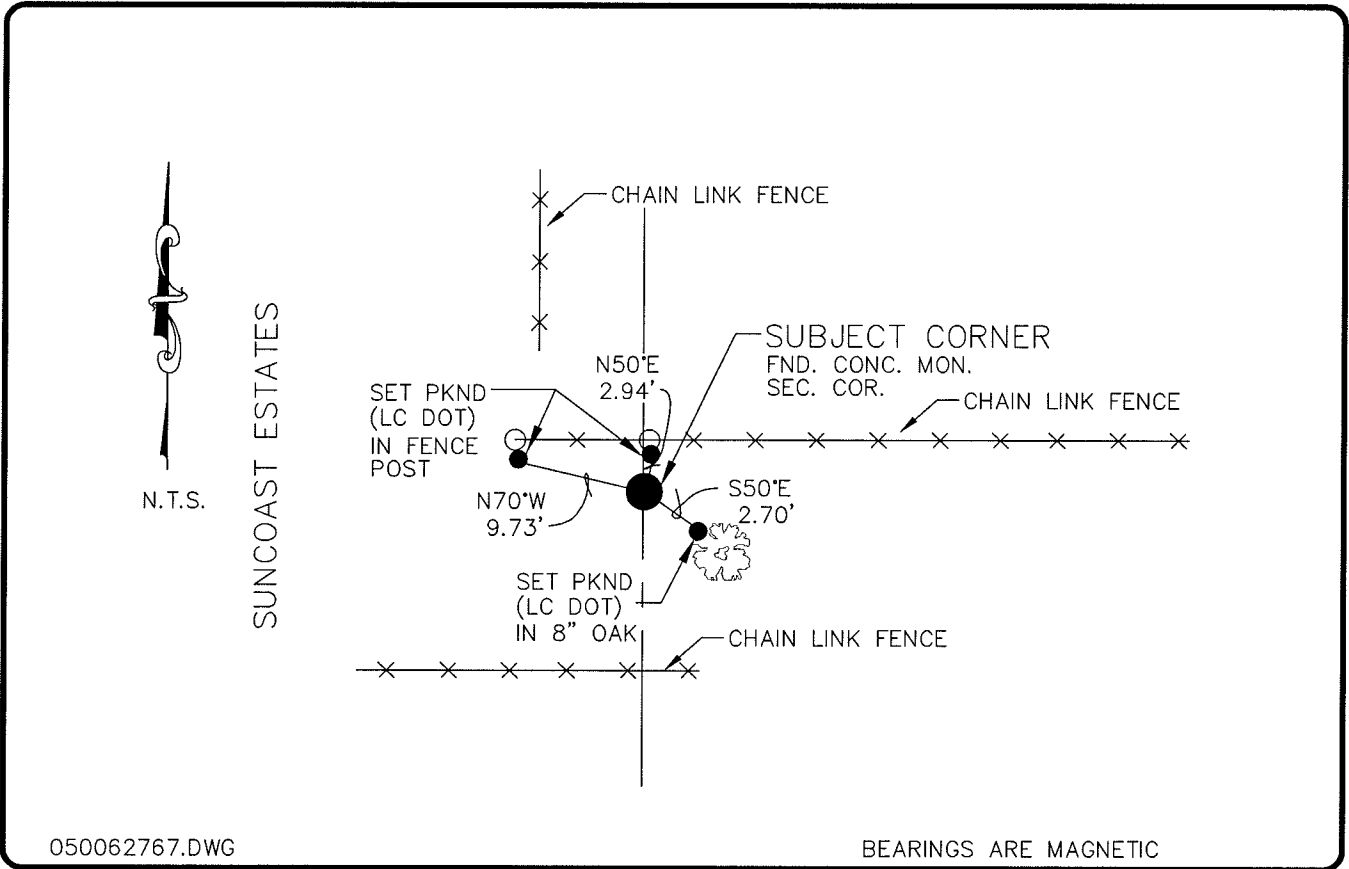


**LAND CORNER RECORD**

**PUBLIC WORKS  
LEE COUNTY, FLORIDA**

Address - 1500 Monroe St., Ft. Myers, Fla. 33901

Phone : (239) 479-8900



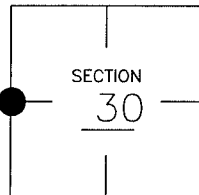
050062767.DWG

BEARINGS ARE MAGNETIC

**COMMENTS:**

**CORNER DESCRIPTION**

W 1/4 Corner  
Section 30  
Township 43  
Range 25



FDOT LOCATES 3"X3" CONC. MON. IN 1991. STAMPED 2465 AND SETS REFERENCE TIES. FDOT LOCATES 3"X3" CONC. MON. IN 1999 AND SETS REFERENCE TIES.

**HORIZONTAL POSITION INFORMATION**

Florida West Zone, NAD 1983(1990 Adjustment)

Northing(ft) 861524.64 Easting(ft) 702309.12

Latitude 26°42'13.64008" Longitude 81°51'31.18286"

Scale Factor 0.99994361

**EXISTING CERTIFIED CORNER RECORDS**

Document No.	Date
<u>38706</u>	<u>2-11-91</u>
<u>68709</u>	<u>6-16-99</u>

The above documents are based on FDEP Bureau of Surveying and Mapping Record Information.

I hereby certify the monument and accessories shown above were field located on 12-10-04.

**Arthur W. Parsons, County Surveyor**  
Professional Surveyor and Mapper  
Florida Certificate No. 2987  
Date Signed 12-19-05

Lee County Department of Transportation  
1500 Monroe Street  
Fort Myers, Florida 33901  
Phone: (239) 479-8900

POINT NO. 147

BLM REFERENCE NO. T43SR25E100240