

FLORIDA DEPARTMENT OF ENVIRONMENTAL PROTECTION

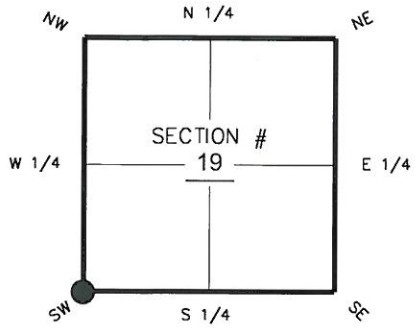
CERTIFIED CORNER RECORD

DOC. # _____
 BLM. # T43SR25E100300

CORNER DESCRIPTION: **MONUMENTATION DESCRIPTION (EVIDENCE FOUND OR METHOD TO SET)**

Depict corner with

FOUND 3-1/2"x3-1/2" CONCRETE MONUMENT WITH ALUMINUM DISK "STARNES & ASSOC. INC. PLS 2465"



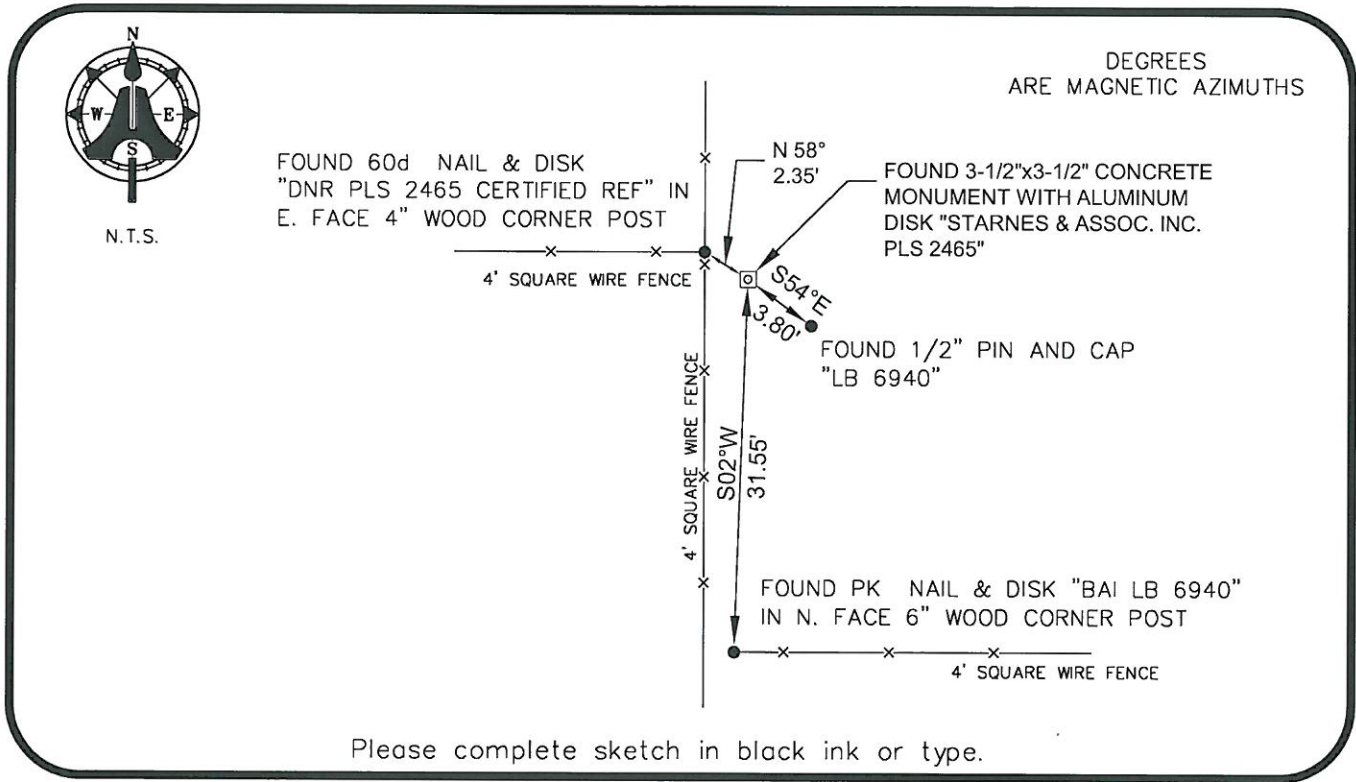
SW corner of Section 19
 Twp 43 S, Rge 25 E
 Tallahassee Base Meridian,
 LEE County(s), Florida

PRIOR CCR'S:

DOC. # 078422, 068707

HORIZONTAL POSITION INFORMATION (if determined):

Latitude 26°42'39.9910" N Longitude 81°51'31.1227" W
 Y(NORTHING-Ft.) 864185.30 X(EASTING-Ft.) 702311.62 Zone WEST
 Convergence 00°03'48.7" Scale factor 0.99994362
 Coordinate determination: GPS
 Horizontal datum: NAD83(NSRS2007)
 Accuracy (circle one): 1st 2nd 3rd other 1:35,000



SURVEYORS CERTIFICATE:

I certify the monument and accessories indicated above were field located on 01-08-2013

BEN R. HOMOLA

Ben R. Homola 3950
 SIGNATURE PSM NO.

AIM ENGINEERING & SURVEYING, INC. 3114
 FIRM OR AGENCY LB NO.

5300 LEE BOULEVARD
 LEHIGH ACRES ADDRESS FL 33971

(239)332-4569 CITY STATE ZIP
 02/26/2013 DATE

EMBOSSSED SEAL OVER SIGNATURE

SEND ORIGINAL TO:
 Department of Environmental Protection
 Bureau of Surveying and Mapping
 3900 Commonwealth Boulevard
 Mail Station 105
 Tallahassee, Florida 32399

D.E.P. USE ONLY
Processed: _____
B.L.M. - I.D. _____
QUAD - I.D. _____