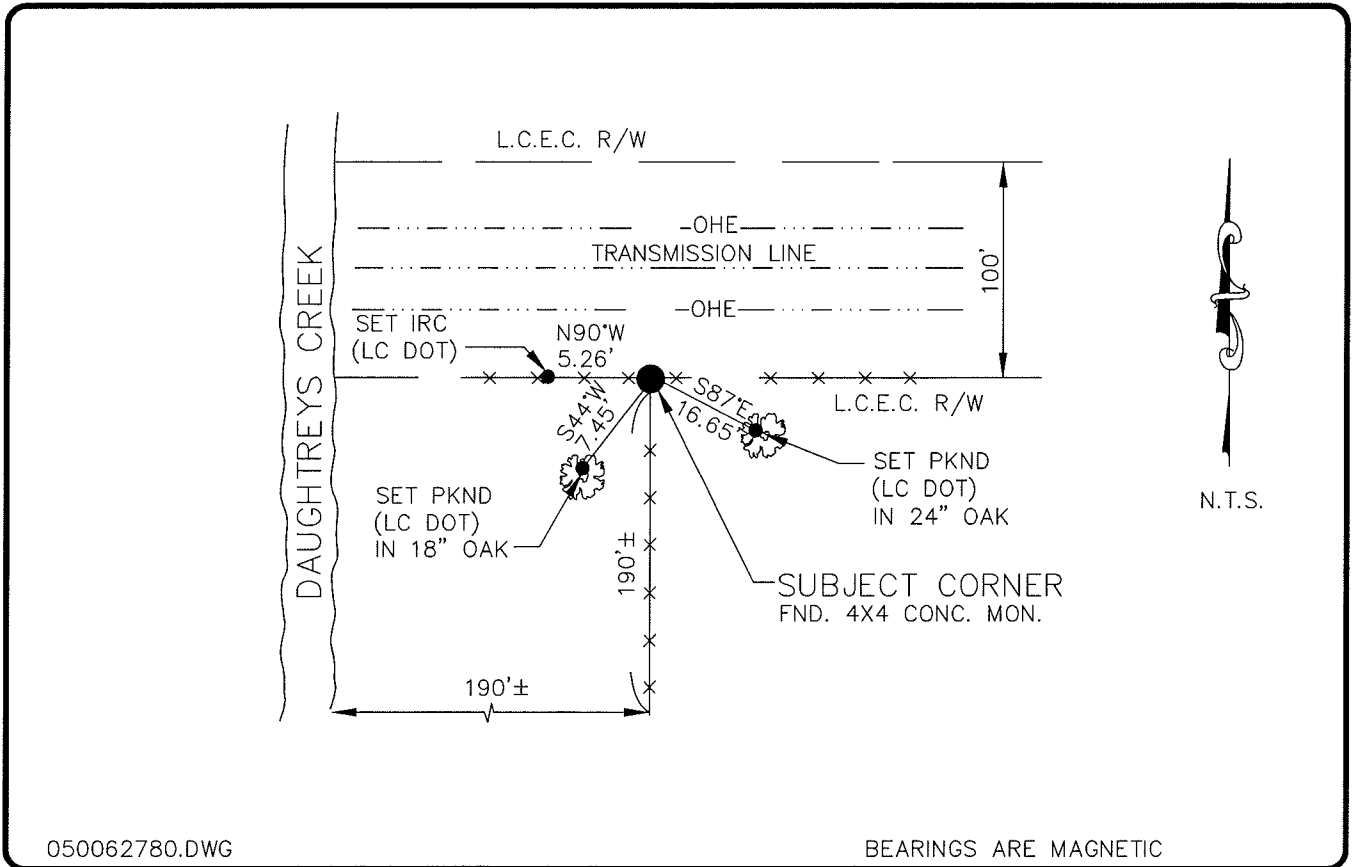


LAND CORNER RECORD

**PUBLIC WORKS
LEE COUNTY, FLORIDA**

Address - 1500 Monroe St., Ft. Myers, Fla. 33901

Phone : (239) 479-8900



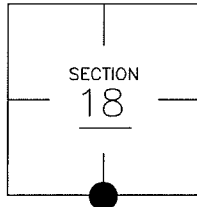
050062780.DWG

BEARINGS ARE MAGNETIC

COMMENTS:

CORNER DESCRIPTION

S 1/4 Corner
Section 18
Township 43
Range 25



LES BULSON (JEI) FOUND A 4"x4" CONC. MON. 0.5' NORTH AND 1.2' EAST OF FENCE CORNER AND CALLED FOR IT AS A LOCALLY ACCEPTED CORNER.

HORIZONTAL POSITION INFORMATION

Florida West Zone, NAD 1983(1990 Adjustment)
 Northing(ft) 869536.81 Easting(ft) 705025.40
 Latitude 26°43'32.96115" Longitude 81°51'01.12649"
 Scale Factor 0.99994361

EXISTING CERTIFIED CORNER RECORDS

Document No.	Date
<u>8839</u>	<u>11-15-80</u>

The above documents are based on FDEP Bureau of Surveying and Mapping Record Information.

I hereby certify the monument and accessories shown above were field located on 12-2-04.

Arthur W. Parsons, County Surveyor
 Professional Surveyor and Mapper
 Florida Certificate No. 2987
 Date Signed 12-19-05

Lee County Department of Transportation
 1500 Monroe Street
 Fort Myers, Florida 33901
 Phone: (239) 479-8900

POINT NO. 145

BLM REFERENCE NO. T43SR25E140400