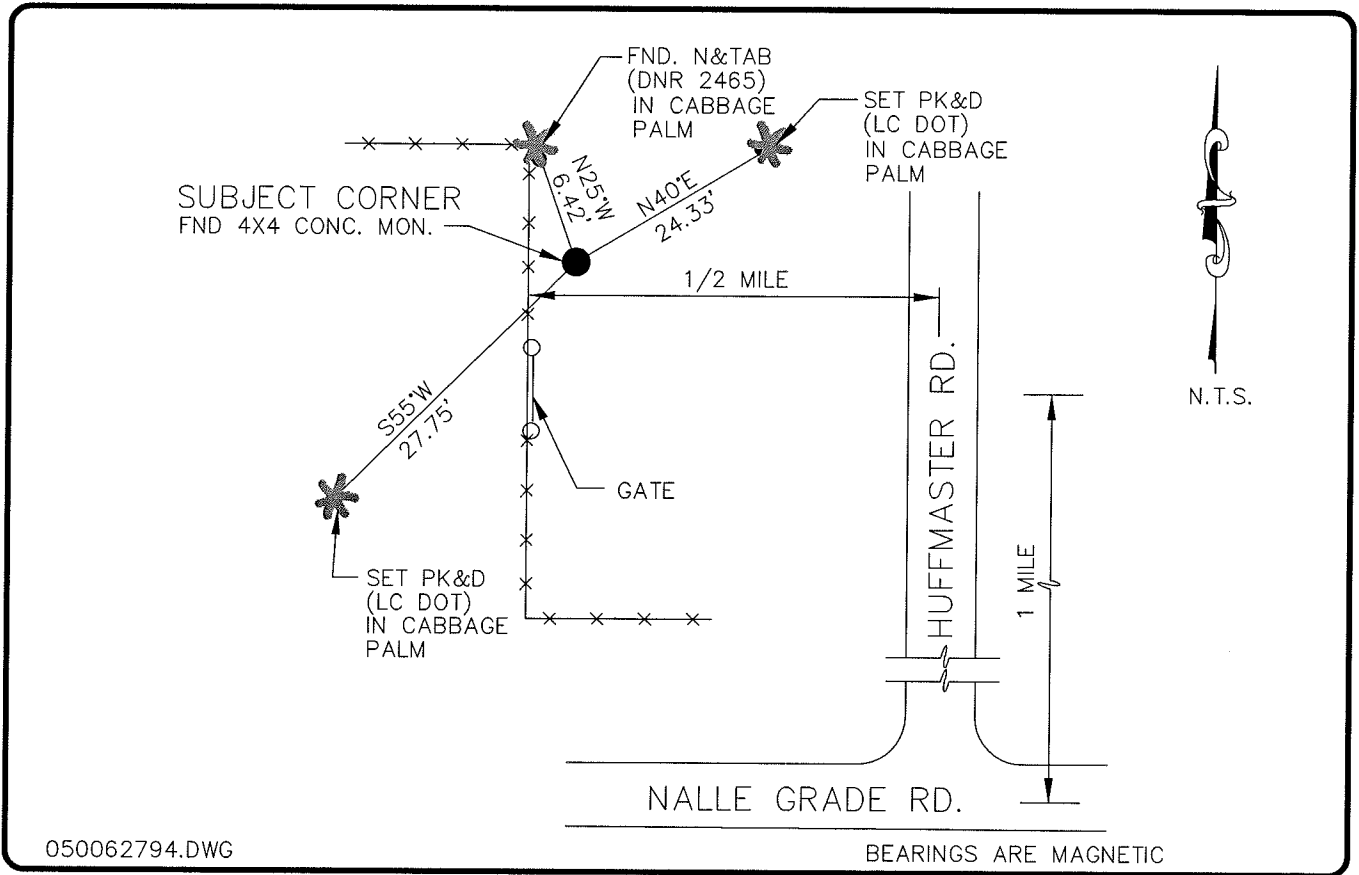


**LAND CORNER RECORD**

**PUBLIC WORKS  
LEE COUNTY, FLORIDA**

Address - 1500 Monroe St., Ft. Myers, Fla. 33901

Phone : (239) 479-8900



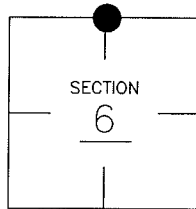
050062794.DWG

**COMMENTS:**

4"X4" CONC. MONUMENT FOUND HAS BEEN USED AND ACCEPTED BY LOCAL SURVEYORS AND APPARENTLY REFERENCED IN BY STARNES (LS #2465).

**CORNER DESCRIPTION**

N 1/4 Corner  
Section 6  
Township 43  
Range 25



**HORIZONTAL POSITION INFORMATION**

Florida West Zone, NAD 1983(1990 Adjustment)

Northing(ft) 885562.77 Easting(ft) 705003.60

Latitude 26°46'11.680504' Longitude 81°51'01.159135"

Scale Factor 0.99994391

**EXISTING CERTIFIED CORNER RECORDS**

Document No.	Date
NONE FOUND	

The above documents are based on FDEP Bureau of Surveying and Mapping Record Information.

I hereby certify the monument and accessories shown above were field located on 3-30-05.

**Arthur W. Parsons, County Surveyor**  
Professional Surveyor and Mapper  
Florida Certificate No. 2987  
Date Signed 12-19-05

Lee County Department of Transportation  
1500 Monroe Street  
Fort Myers, Florida 33901  
Phone: (239) 479-8900

POINT NO. 232

BLM REFERENCE NO. T43SR25E140700