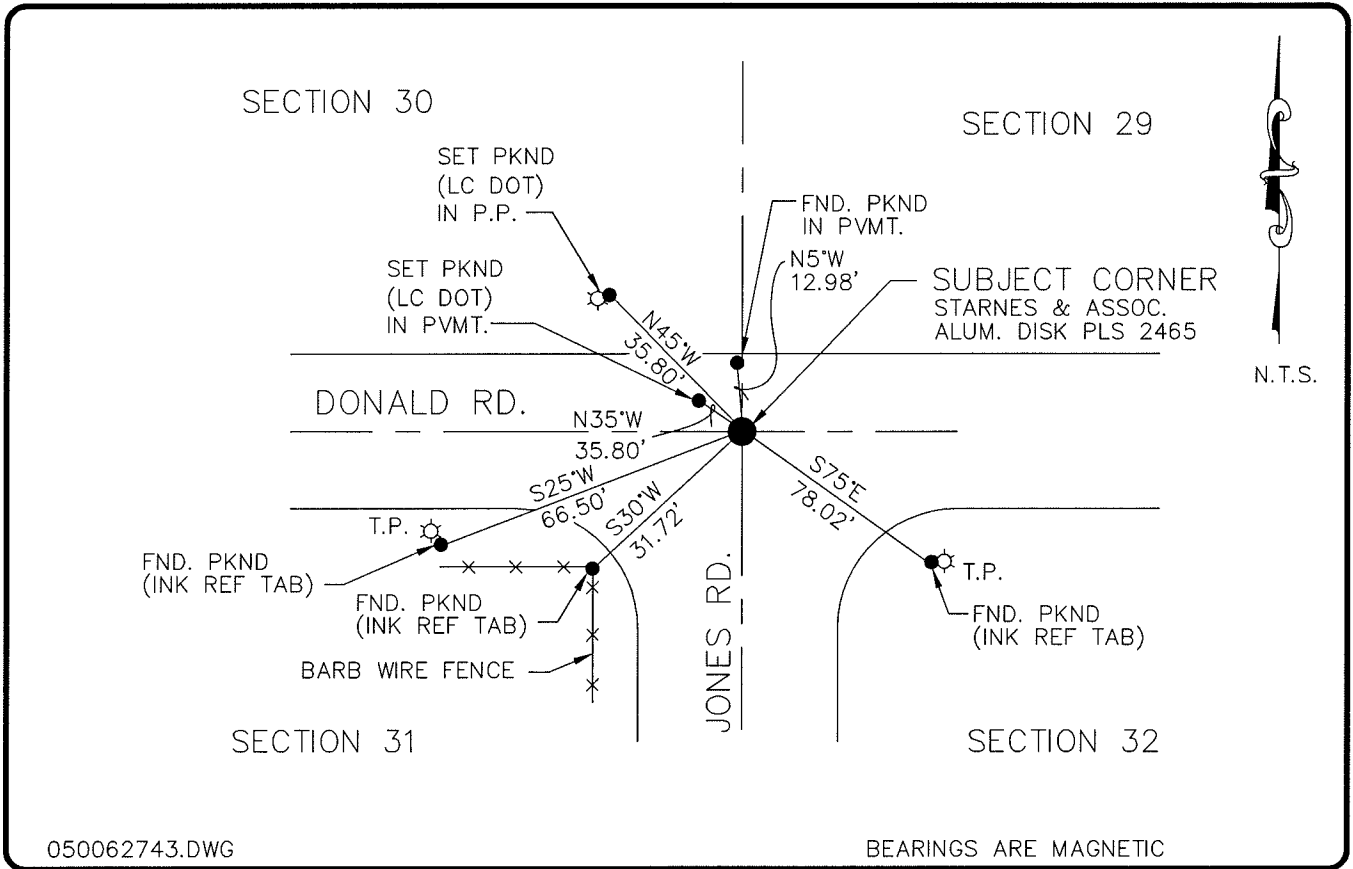


LAND CORNER RECORD

**PUBLIC WORKS
LEE COUNTY, FLORIDA**

Address - 1500 Monroe St., Ft. Myers, Fla. 33901

Phone : (239) 479-8900

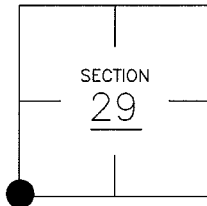


COMMENTS:

FOUND STARNES AND ASSCS. ALUM. DISK PLS #2465. STARNES STATES IN CCR #36563 THAT A #4 REBAR WITH AN IDENTIFICATION WAS SET. ALL CCR. RECORDS SHOW THAT ALUM. CAP WITH PLS #2465 IS BEING USED FOR SECTION CORNER.

CORNER DESCRIPTION

SW Corner
Section 29
Township 43
Range 25



HORIZONTAL POSITION INFORMATION

Florida West Zone, NAD 1983(1990 Adjustment)

Northing(ft) 858985.66 Easting(ft) 707665.46

Latitude 26°41'48.432036" Longitude 81°50'32.152793"

Scale Factor 0.99994421

EXISTING CERTIFIED CORNER RECORDS

Document No.	Date
<u>18116</u>	<u>12-27-83</u>
<u>36563</u>	<u>1990</u>
<u>38712</u>	<u>2-11-91</u>
<u>68713</u>	<u>6-9-99</u>

The above documents are based on FDEP Bureau of Surveying and Mapping Record Information.

I hereby certify the monument and accessories shown above were field located on 7-6-04.

Arthur W. Parsons, County Surveyor
Professional Surveyor and Mapper
Florida Certificate No. 2987
Date Signed 12-19-05

Lee County Department of Transportation
1500 Monroe Street
Fort Myers, Florida 33901
Phone: (239) 479-8900

POINT NO. 46

BLM REFERENCE NO. T43SR25E200200