

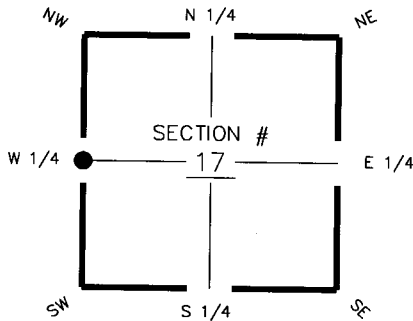
FLORIDA DEPARTMENT OF ENVIRONMENTAL PROTECTION CERTIFIED CORNER RECORD

DOC. # 094435

CORNER DESCRIPTION:

Depict corner with **●**

MONUMENTATION DESCRIPTION (EVIDENCE FOUND OR METHOD TO SET)
SET 5/8" IRON ROD AND CAP "TBE LB6668"

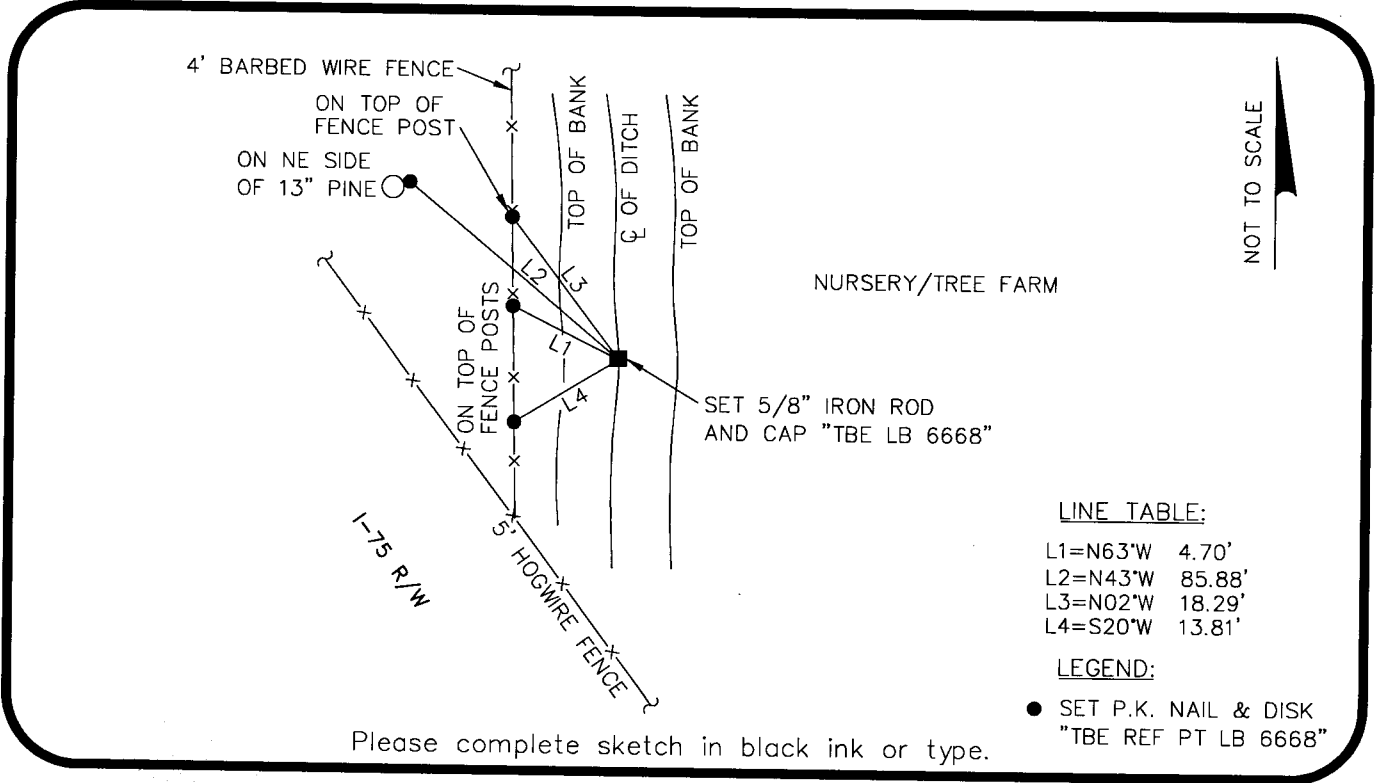


W 1/4 corner of Section 17
Twp 43 S, Rge 25 E
Tallahassee Base Meridian,
Charlotte County(s), Florida

HORIZONTAL POSITION INFORMATION (if determined):

Latitude 26°44'00.1882" Longitude 81°50'31.9830"
Y(NORTHING-Ft.) 872,289.120 X(EASTING-Ft.) 707,664.389 Zone FL West
Convergence 0°04'15.517" Scale factor 0.9999442170

Coordinate determination (circle one): Field traverse GPS
Horizontal datum (circle one): NAD27 NAD83(1986) NAD83(1990) other (explain)
Accuracy (circle one): 1st 2nd 3rd other _____



LINE TABLE:

L1=N63°W	4.70'
L2=N43°W	85.88'
L3=N02°W	18.29'
L4=S20°W	13.81'

LEGEND:
● SET P.K. NAIL & DISK
○ "TBE REF PT LB 6668"

Please complete sketch in black ink or type.

SURVEYORS CERTIFICATE:

I certify the monument and accessories indicated above were field located on 2/1/07

[Signature]
SIGNATURE 5196
TBE Group, Inc. PSM NO. 6668
FIRM OR AGENCY LB NO.
380 Park Place Blvd., Suite 300 ADDRESS
Clearwater, Florida 33759
CITY STATE ZIP
727.531.3505 PHONE NUMBER
DATE 05/05/08

SEND ORIGINAL TO:
Department of Environmental Protection
Bureau of Surveying and Mapping
3900 Commonwealth Boulevard
Mail Station 105
Tallahassee, Florida 32399

D.E.P. USE ONLY

Processed: 5-14-08 MB
B.L.M. - I.D. 200440
QUAD - I.D. 225 TOTTMYERS

EMBOSSSED SEAL OVER SIGNATURE