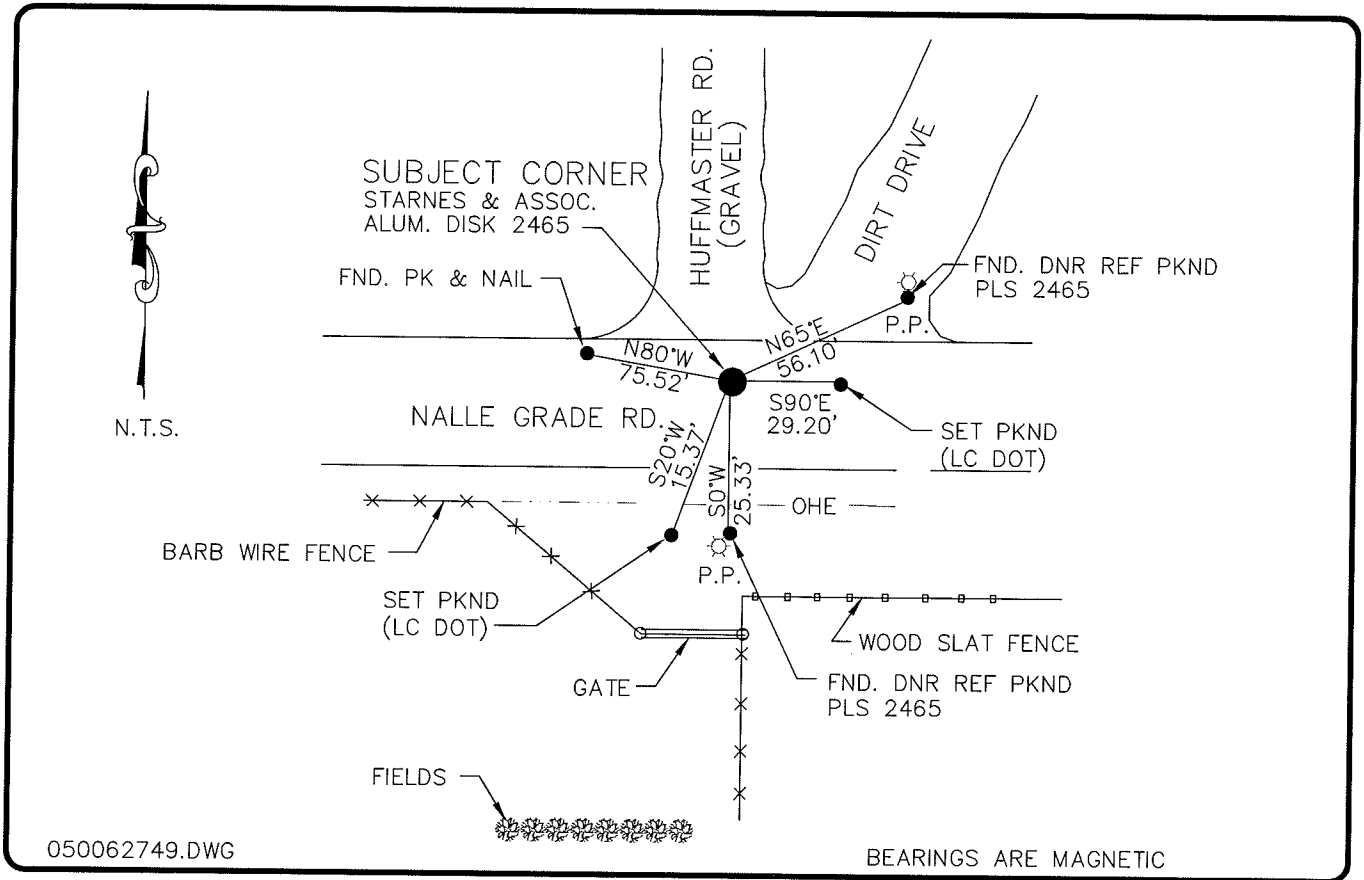


LAND CORNER RECORD

**PUBLIC WORKS
LEE COUNTY, FLORIDA**

Address - 1500 Monroe St., Ft. Myers, Fla. 33901

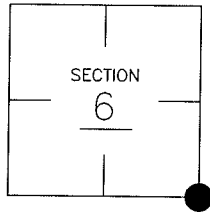
Phone : (239) 479-8900



COMMENTS:

CORNER DESCRIPTION

SE Corner
Section 6
Township 43
Range 25



FOUND STARNES AND ASSOCIATES ALUM. DISK STAMPED PLS 2465. STARNES RECOVERED AND REFERENCED RAILROAD SPIKE IN 1981.

HORIZONTAL POSITION INFORMATION

Florida West Zone, NAD 1983(1990 Adjustment)
 Northing(ft) 880313.69 Easting(ft) 707683.65
 Latitude 26°45'19.66212" Longitude 81°50'31.66080"
 Scale Factor 0.99994421

EXISTING CERTIFIED CORNER RECORDS

Document No.	Date
<u>14741</u>	<u>12-6-81</u>

The above documents are based on FDEP Bureau of Surveying and Mapping Record Information.

I hereby certify the monument and accessories shown above were field located on 7-6-04.

Arthur W. Parsons
Arthur W. Parsons, County Surveyor
 Professional Surveyor and Mapper
 Florida Certificate No. 2987
 Date Signed 12-19-05

Lee County Department of Transportation
 1500 Monroe Street
 Fort Myers, Florida 33901
 Phone: (239) 479-8900

POINT NO. 6

BLM REFERENCE NO. T43SR25E200600