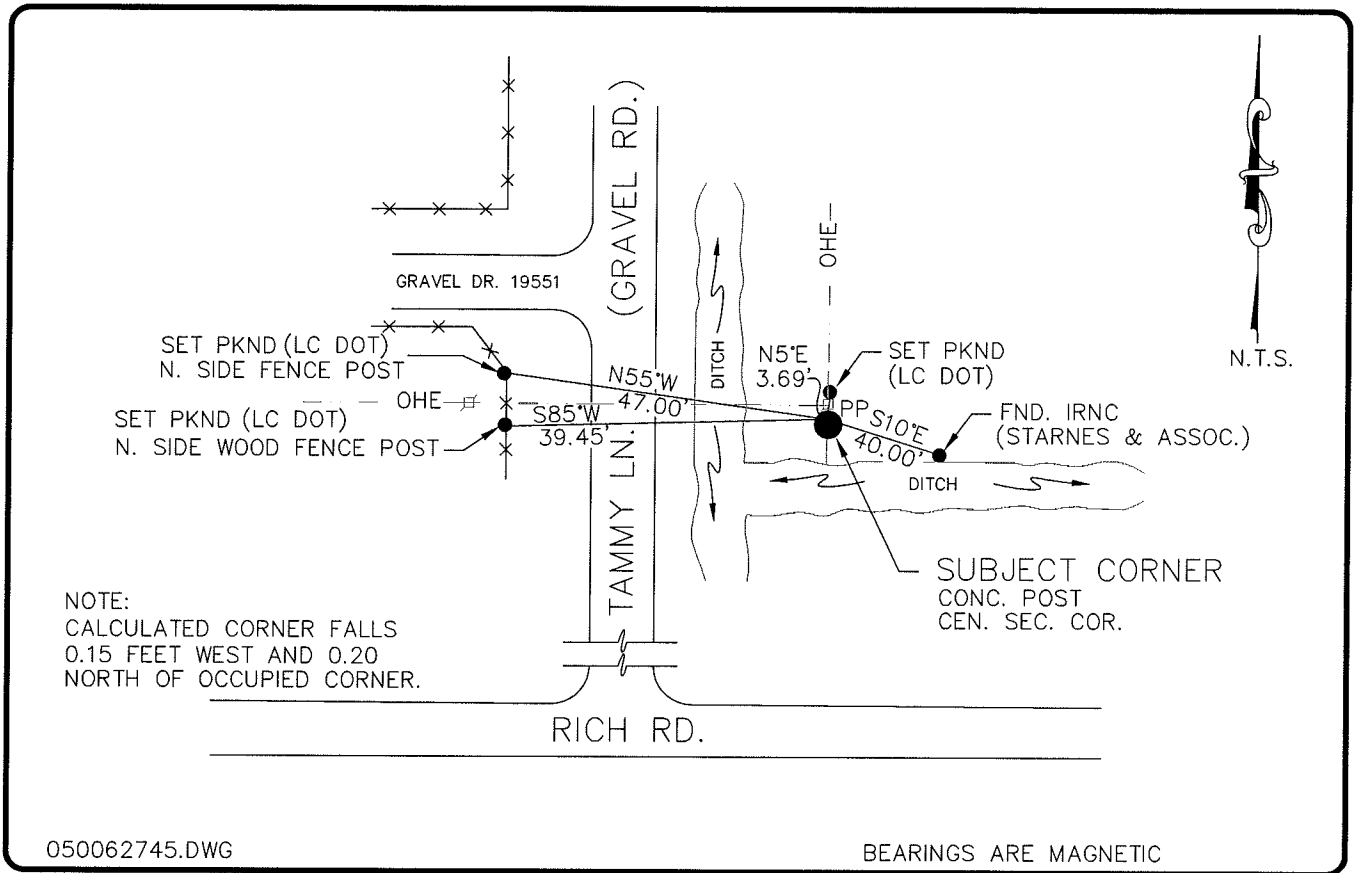


LAND CORNER RECORD

**PUBLIC WORKS
LEE COUNTY, FLORIDA**

Address - 1500 Monroe St., Ft. Myers, Fla. 33901

Phone : (239) 479-8900



050062745.DWG

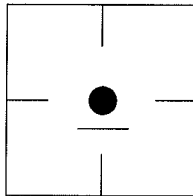
BEARINGS ARE MAGNETIC

COMMENTS:

CONC. POST SET BY D. STARNES 6-20-90
DOCUMENT STATES 4'X4' C.M. FOUND
0.01-N & 0.46-E

CORNER DESCRIPTION

Cen. Sec. Corner
Section 8
Township 43
Range 25



HORIZONTAL POSITION INFORMATION

Florida West Zone, NAD 1983(1990 Adjustment)
Northing(ft) 877638.52 Easting(ft) 710276.15
Latitude 26°44'53.13488" Longitude 81°50'03.09882"
Scale Factor 0.99994453

EXISTING CERTIFIED CORNER RECORDS

Document No.	Date
<u>0036578</u>	<u>06-20-90</u>

The above documents are based on FDEP Bureau of Surveying and Mapping Record Information.

I hereby certify the monument and accessories shown above were field located on 7-7-04.

Arthur W. Parsons, County Surveyor
Professional Surveyor and Mapper
Florida Certificate No. 2987
Date Signed 12-19-05

Lee County Department of Transportation
1500 Monroe Street
Fort Myers, Florida 33901
Phone: (239) 479-8900

POINT NO. 100

BLM REFERENCE NO. T43SR25E240540