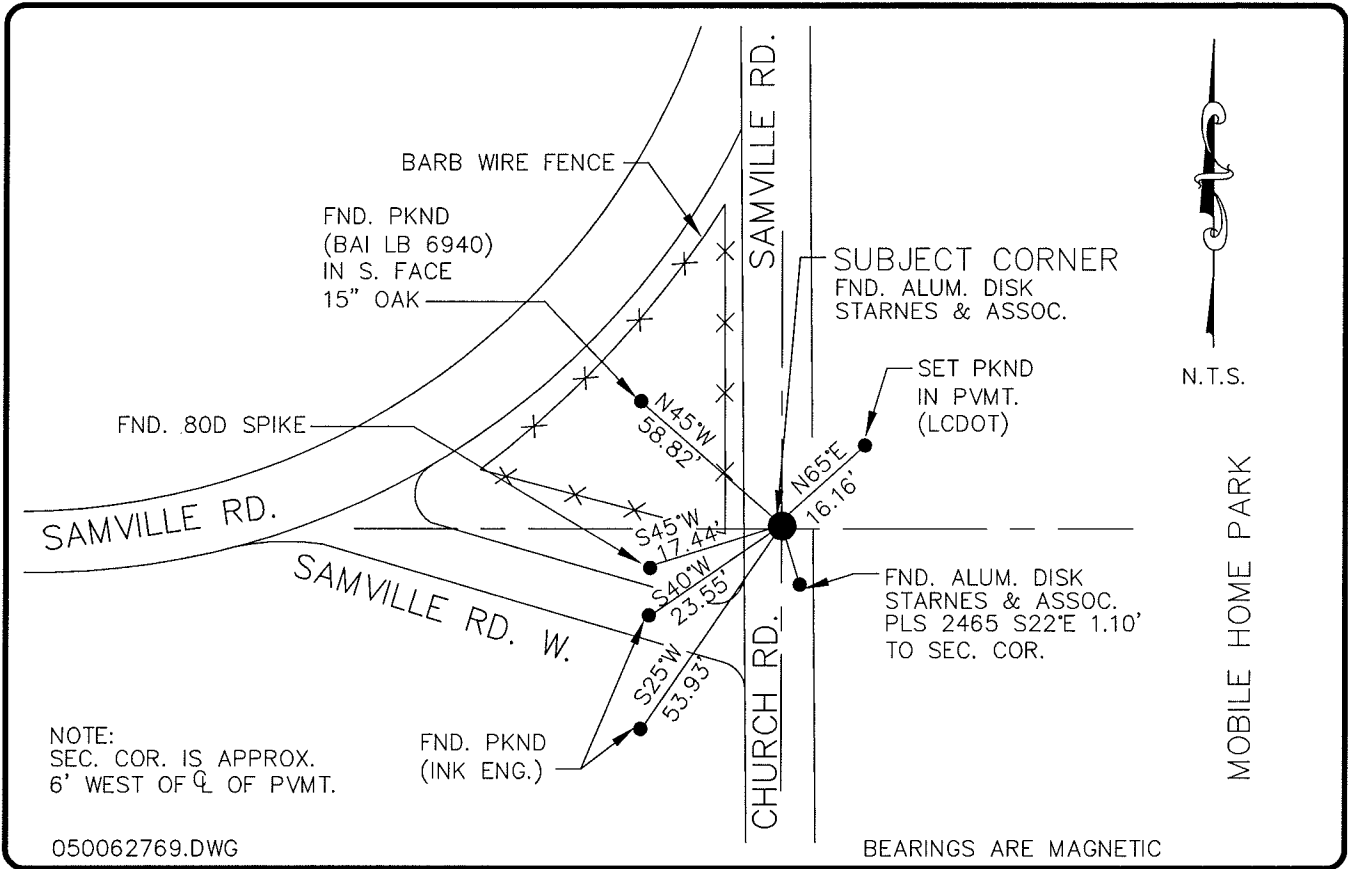


LAND CORNER RECORD

**PUBLIC WORKS
LEE COUNTY, FLORIDA**

Address - 1500 Monroe St., Ft. Myers, Fla. 33901

Phone : (239) 479-8900



050062769.DWG

COMMENTS:

RAILROAD SPIKE FOUND AND REFERENCED BY PAUL DUKUS IN 1983, C.C.R. 18112. STARNES FOUND AND REFERENCED RAILROAD SPIKE IN 1984, C.C.R. DOC. 19072. BEN HOMOLA FOUND A STARNES AND ASSCS. ALUM. DISK IN 1990 STAMPED STARNES AND ASSCS. PLS#2465. JEFF COONER (JEI) IN 1990 FOUND A CONC. MON. UNDER PVMT. AND ALUM. DISK 1.10' S22°05'01"E. IN 1990, FDOT RECOVERS AND ACCEPTS STARNES CORNER #2465 AS SEC. COR. CALLS FOR STARNES COR. AS SEC. COR.

HORIZONTAL POSITION INFORMATION

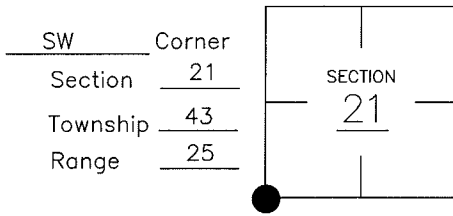
Florida West Zone, NAD 1983(1990 Adjustment)

Northing(ft) 864313.91 Easting(ft) 712922.86

Latitude 26°42'41.134664" Longitude 81°49'34.102550"

Scale Factor 0.99994486

CORNER DESCRIPTION



EXISTING CERTIFIED CORNER RECORDS

Document No.	Date
18112	12-22-83
19072	1-5-84
35224	4-9-90
36329	6-27-90
68703	6-28-99
78417	4-9-03

The above documents are based on FDEP Bureau of Surveying and Mapping Record Information.

I hereby certify the monument and accessories shown above were field located on 7-6-04.

Arthur W. Parsons, County Surveyor
Professional Surveyor and Mapper
Florida Certificate No. 2987
Date Signed 12-19-05

Lee County Department of Transportation
1500 Monroe Street
Fort Myers, Florida 33901
Phone: (239) 479-8900

POINT NO. 51

BLM REFERENCE NO. T43SR25E300300