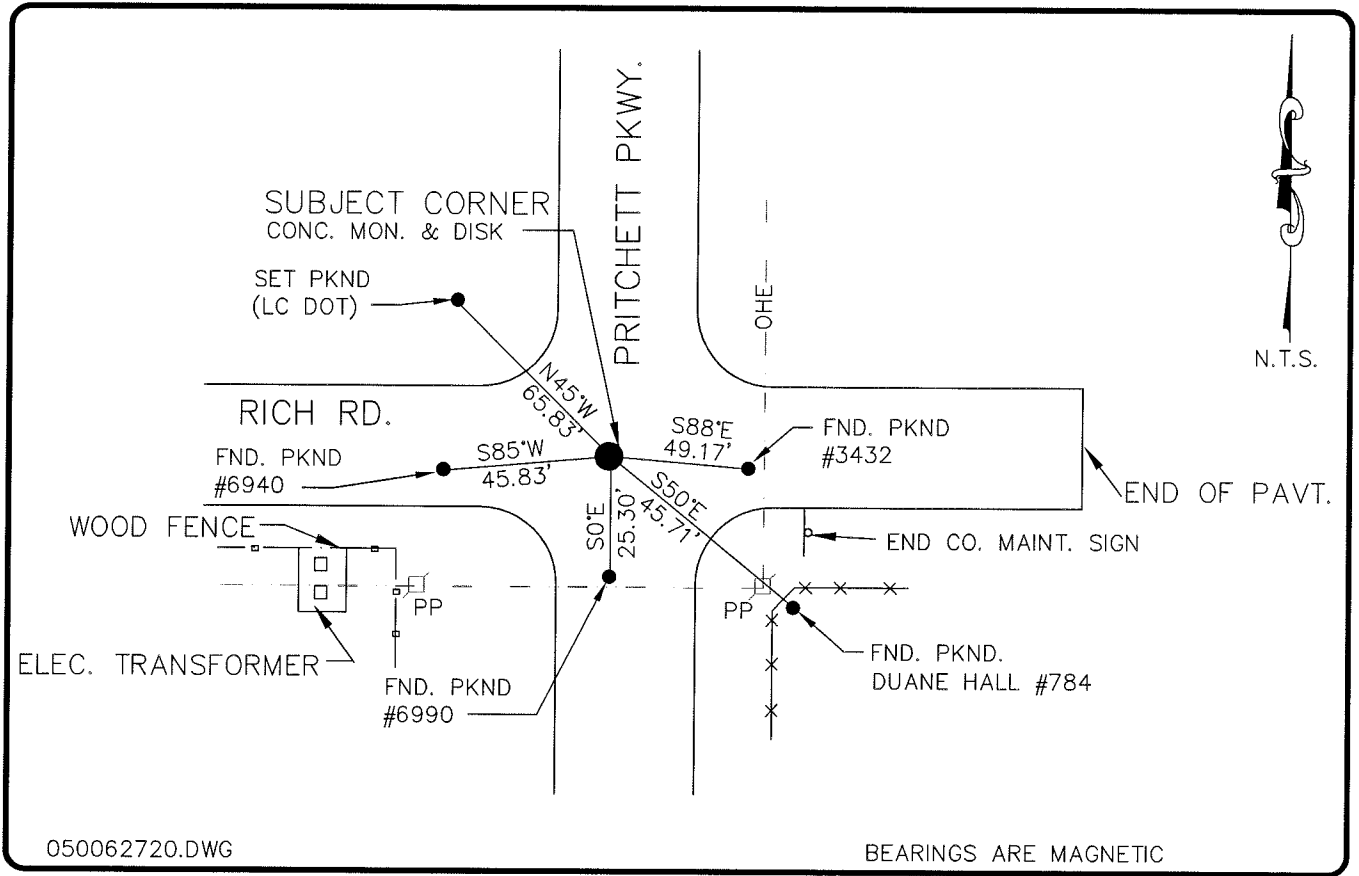


LAND CORNER RECORD

**PUBLIC WORKS
LEE COUNTY, FLORIDA**

Address - 1500 Monroe St., Ft. Myers, Fla. 33901

Phone : (239) 479-8900



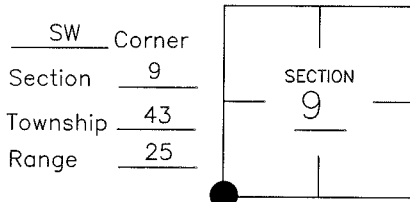
050062720.DWG

BEARINGS ARE MAGNETIC

COMMENTS:

FOUND 4"X4" CONC. MONUMENT
& DISK AT LOCATION ACCEPTED
BY LOCAL SURVEYORS

CORNER DESCRIPTION



HORIZONTAL POSITION INFORMATION

Florida West Zone, NAD 1983(1990 Adjustment)

Northing(ft) 874972.79 Easting(ft) 712875.43

Latitude 26°44'26.69977" Longitude 81°49'34.46553"

Scale Factor 0.99994486

EXISTING CERTIFIED CORNER RECORDS

Document No.	Date
<u>13813</u>	<u>11-20-81</u>

The above documents are based on FDEP Bureau of Surveying and Mapping Record Information.

I hereby certify the monument and accessories shown above were field located on 7-6-04

Arthur W. Parsons, County Surveyor
Professional Surveyor and Mapper
Florida Certificate No. 2987
Date Signed 12-19-05

Lee County Department of Transportation
1500 Monroe Street
Fort Myers, Florida 33901
Phone: (239) 479-8900

POINT NO. 10

BLM REFERENCE NO. T43SR25E 300 500