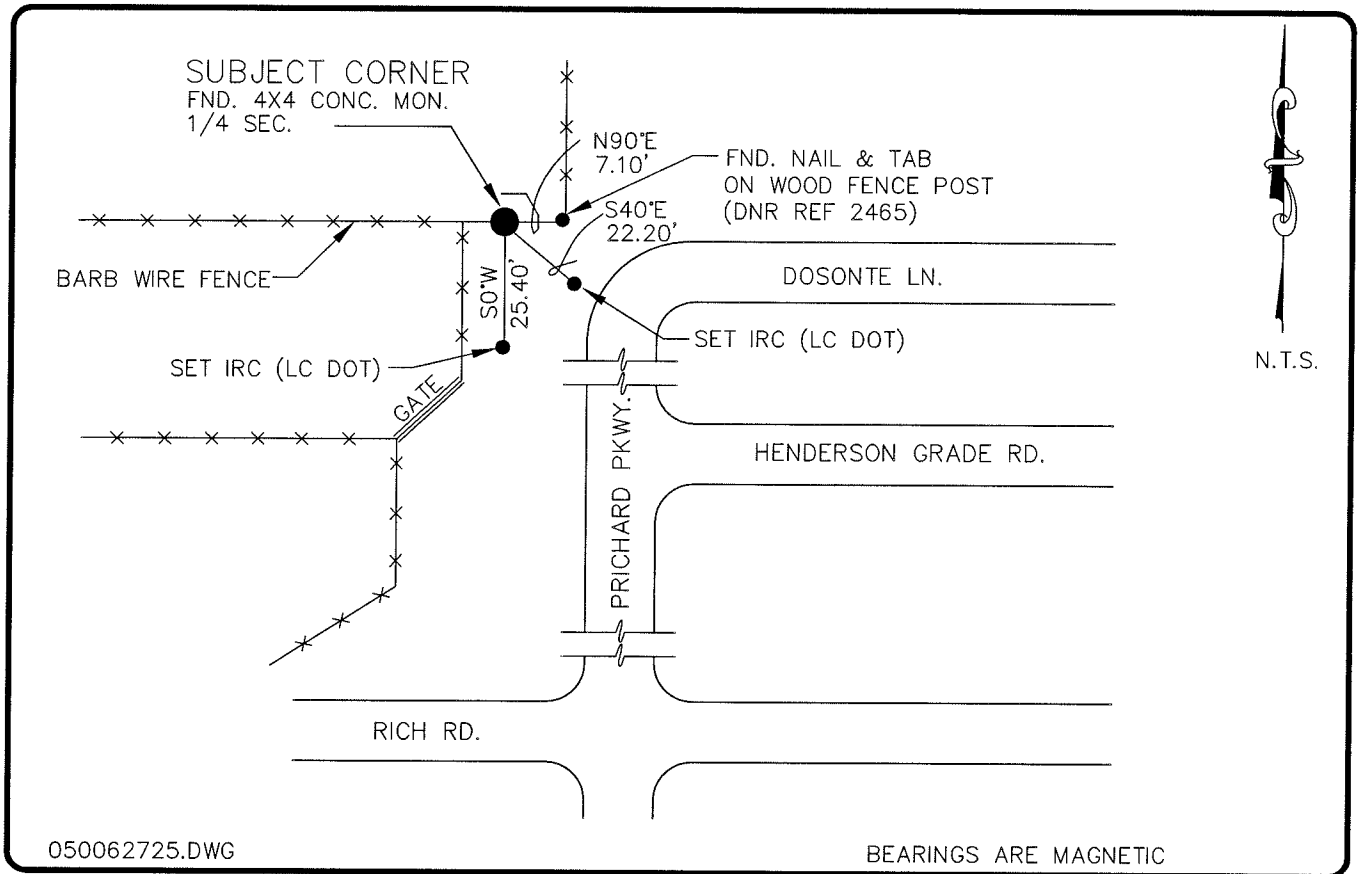


**LAND CORNER RECORD**

**PUBLIC WORKS  
LEE COUNTY, FLORIDA**

Address - 1500 Monroe St., Ft. Myers, Fla. 33901

Phone : (239) 479-8900



050062725.DWG

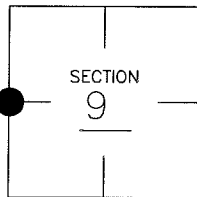
BEARINGS ARE MAGNETIC

**COMMENTS:**

FOUND 4"X4" CONC. MONUMENT  
LOCATED BY STARNES AND NOTED  
ON DOCUMENT NO. 13814

**CORNER DESCRIPTION**

W 1/4 Corner  
Section 9  
Township 43  
Range 25



**HORIZONTAL POSITION INFORMATION**

Florida West Zone, NAD 1983(1990 Adjustment)  
Northing(ft) 877638.90 Easting(ft) 712877.51  
Latitude 26°44'53.09551" Longitude 81°49'34.40782"  
Scale Factor 0.99994486

**EXISTING CERTIFIED CORNER RECORDS**

Document No.	Date
<u>13814</u>	<u>11-20-81</u>

The above documents are based on FDEP Bureau of Surveying and Mapping Record Information.

I hereby certify the monument and accessories shown above were field located on 1-10-05.

**Arthur W. Parsons, County Surveyor**  
Professional Surveyor and Mapper  
Florida Certificate No. 2987  
Date Signed 12-19-05

Lee County Department of Transportation  
1500 Monroe Street  
Fort Myers, Florida 33901  
Phone: (239) 479-8900

POINT NO. 178

BLM REFERENCE NO. T43SR25E 300-540