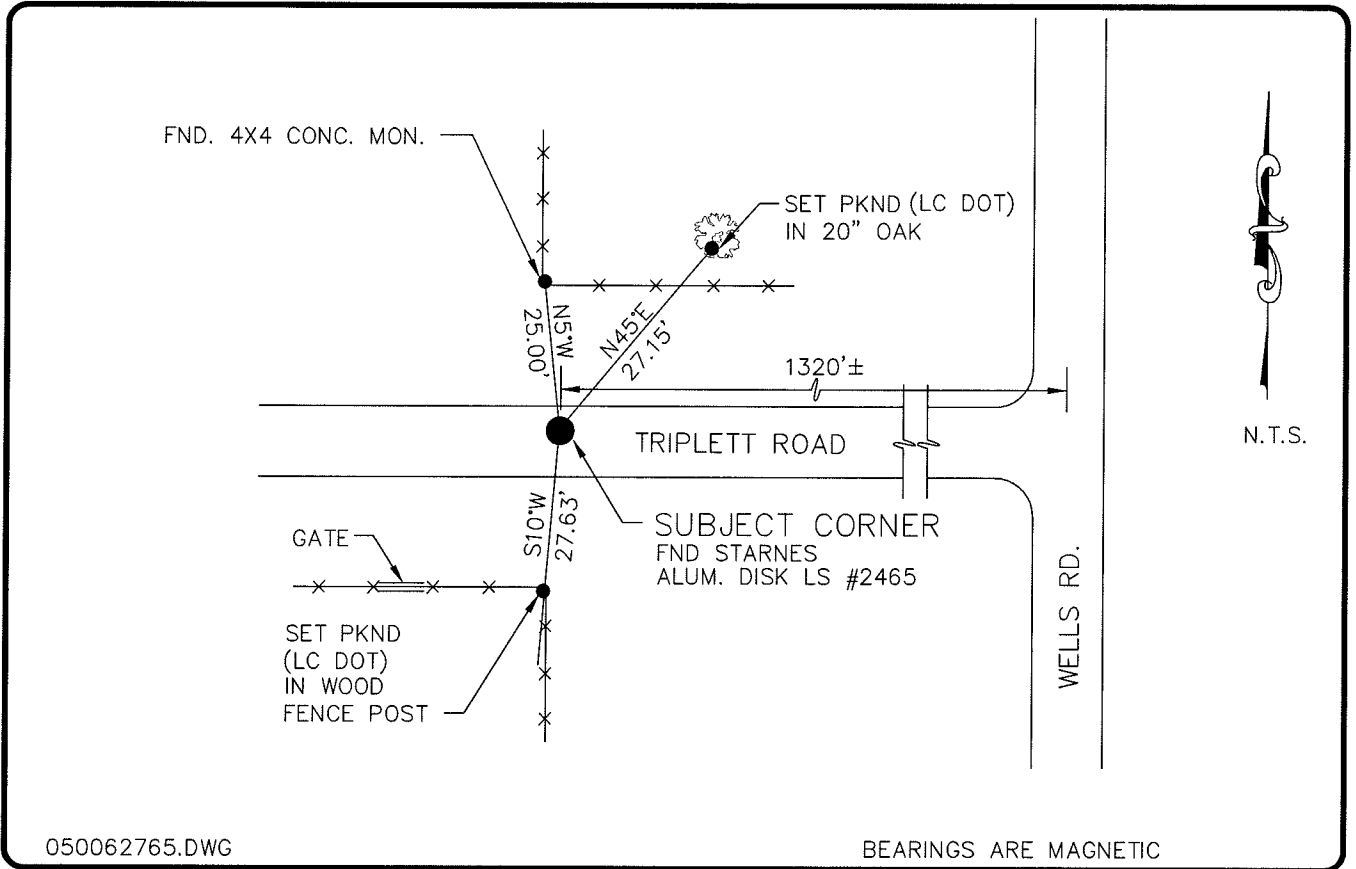


**LAND CORNER RECORD**

**PUBLIC WORKS  
LEE COUNTY, FLORIDA**

Address - 1500 Monroe St., Ft. Myers, Fla. 33901

Phone : (239) 479-8900

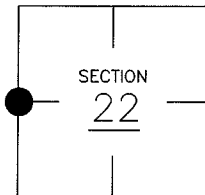


050062765.DWG

**COMMENTS:**

**CORNER DESCRIPTION**

W 1/4 Corner  
Section 22  
Township 43  
Range 25



FOUND ALUMINUM DISK STAMPED STARNES AND ASSOCIATES, LOCALLY ACCEPTED 1/4 SECTION CORNER

**HORIZONTAL POSITION INFORMATION**

Florida West Zone, NAD 1983(1990 Adjustment)

Northing(ft) 866964.65 Easting(ft) 718228.14

Latitude 26°43'07.31242" Longitude 81°48'35.55318"

Scale Factor 0.99994559

**EXISTING CERTIFIED CORNER RECORDS**

Document No.	Date
<u>33105</u>	<u>7-18-89</u>
<u>36590</u>	<u>6-18-90</u>
<u>68698</u>	<u>6-23-99</u>

The above documents are based on FDEP Bureau of Surveying and Mapping Record Information.

I hereby certify the monument and accessories shown above were field located on 2-17-05.

**Arthur W. Parsons, County Surveyor**  
Professional Surveyor and Mapper  
Florida Certificate No. 2987  
Date Signed 12-19-05

Lee County Department of Transportation  
1500 Monroe Street  
Fort Myers, Florida 33901  
Phone: (239) 479-8900

POINT NO. 187

BLM REFERENCE NO. T43SR25E400340