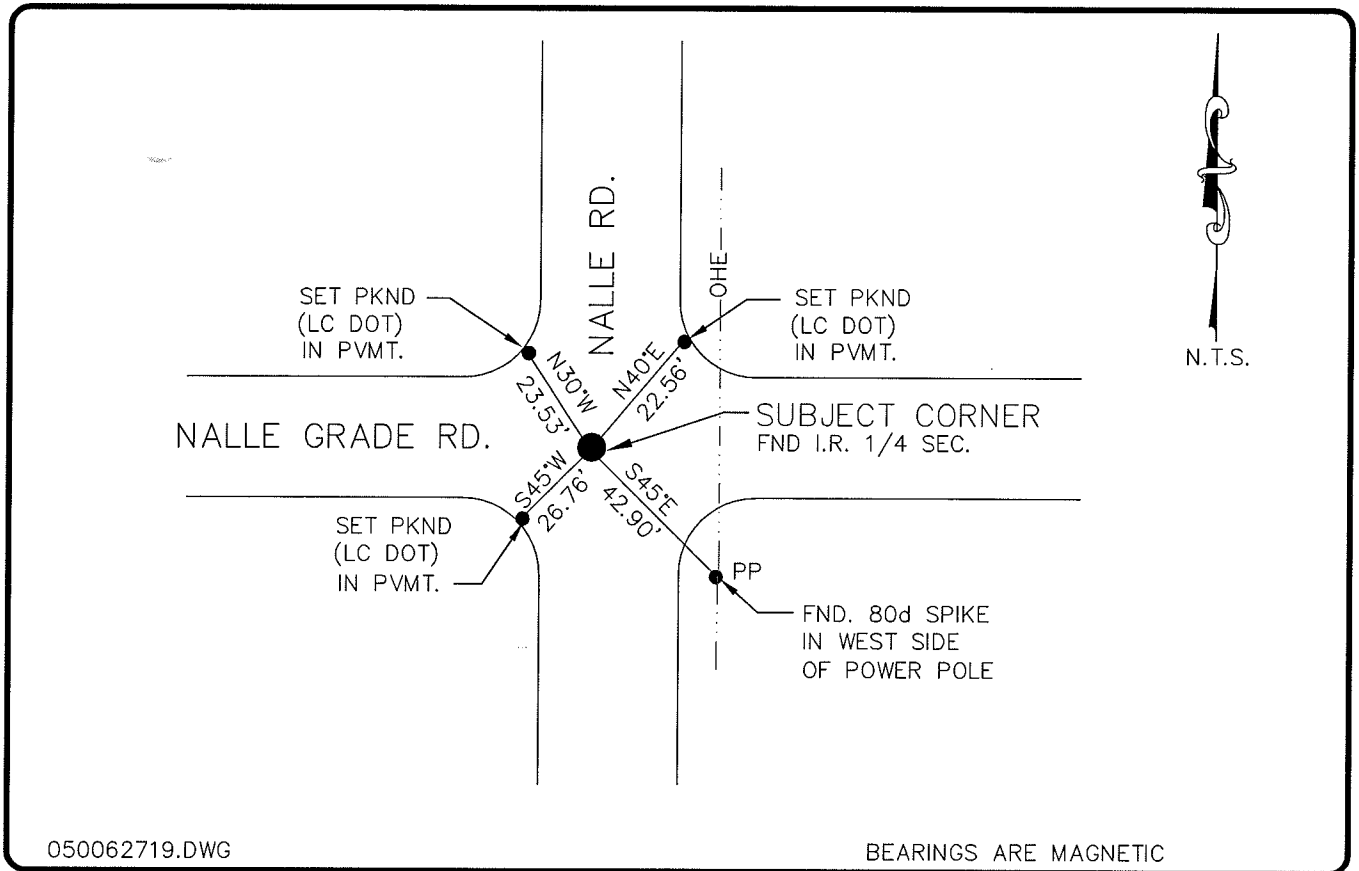


LAND CORNER RECORD

PUBLIC WORKS  
LEE COUNTY, FLORIDA

Address - 1500 Monroe St., Ft. Myers, Fla. 33901

Phone : (239) 479-8900



050062719.DWG

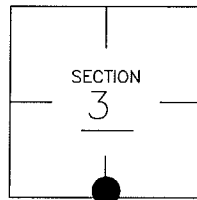
BEARINGS ARE MAGNETIC

**COMMENTS:**

STARNES FOUND AN IRON PIPE 2.5 FEET UNDER ROAD IN 1981 AND SET A CONC. MON. JUST BELOW SURFACE OF NALLE ROAD.

CORNER DESCRIPTION

S 1/4 Corner  
Section 3  
Township 43  
Range 25



HORIZONTAL POSITION INFORMATION

Florida West Zone, NAD 1983(1990 Adjustment)

Northing(ft) 880292.76 Easting(ft) 720894.49

Latitude 26°45'19.27138" Longitude 81°48'05.91899"

Scale Factor 0.99994597

EXISTING CERTIFIED CORNER RECORDS

Document No.	Date
14735	

The above documents are based on FDEP Bureau of Surveying and Mapping Record Information.

I hereby certify the monument and accessories shown above were field located on 10-7-04.

**Arthur W. Parsons, County Surveyor**  
Professional Surveyor and Mapper  
Florida Certificate No. 2987  
Date Signed 12-19-05

Lee County Department of Transportation  
1500 Monroe Street  
Fort Myers, Florida 33901  
Phone: (239) 479-8900

POINT NO. 63

BLM REFERENCE NO. T43SR25E440600