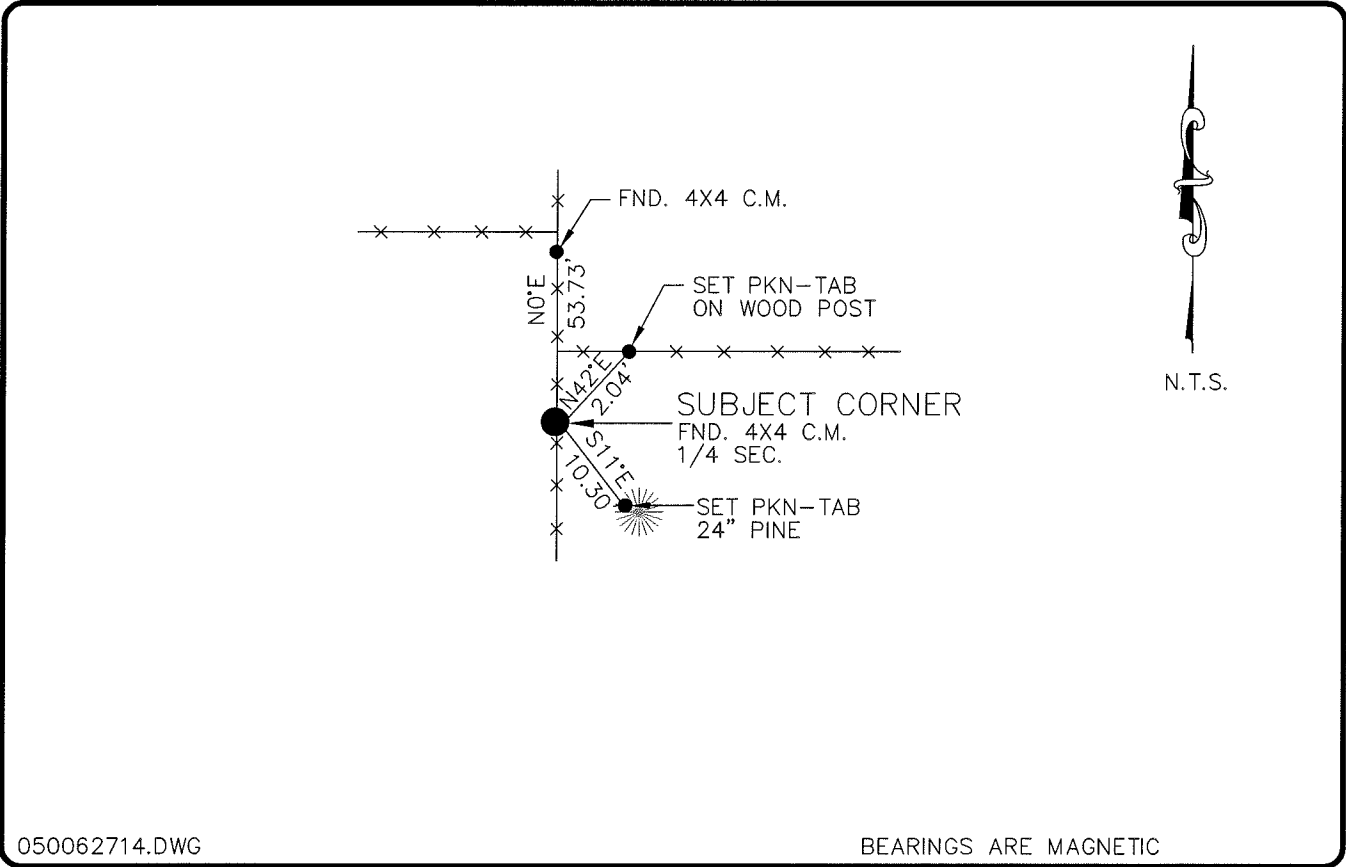


LAND CORNER RECORD

**PUBLIC WORKS
LEE COUNTY, FLORIDA**

Address - 1500 Monroe St., Ft. Myers, Fla. 33901

Phone : (239) 479-8900



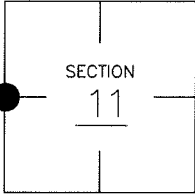
050062714.DWG

BEARINGS ARE MAGNETIC

COMMENTS:

CORNER DESCRIPTION

W 1/4 Corner
 Section 11
 Township 43
 Range 25



FOUND 4"X4" CONC. MONUMENT SHOWN
 ON CCR DOCUMENT #13819 & 37933
 STARNES SURVEY INDICATES THAT CORNER
 WAS PROVEN FOR ORIGINAL LOCATION

HORIZONTAL POSITION INFORMATION

Florida West Zone, NAD 1983(1990 Adjustment)
 Northing(ft) 877587.52 Easting(ft) 723578.84
 Latitude 26°44'52.43684" Longitude 81°47'36.35346"
 Scale Factor 0.99994639

EXISTING CERTIFIED CORNER RECORDS

Document No.	Date
<u>13819</u>	<u>11-06-81</u>
<u>37933</u>	<u>01-15-91</u>
_____	_____
_____	_____

The above documents are based on FDEP Bureau
 of Surveying and Mapping Record Information.

I hereby certify the monument and accessories
 shown above were field located on 12-20-04.

Arthur W. Parsons, County Surveyor
 Professional Surveyor and Mapper
 Florida Certificate No. 2987
 Date Signed 12-19-05

Lee County Department of Transportation
 1500 Monroe Street
 Fort Myers, Florida 33901
 Phone: (239) 479-8900

POINT NO. 156

BLM REFERENCE NO. T43SR25E 500 540