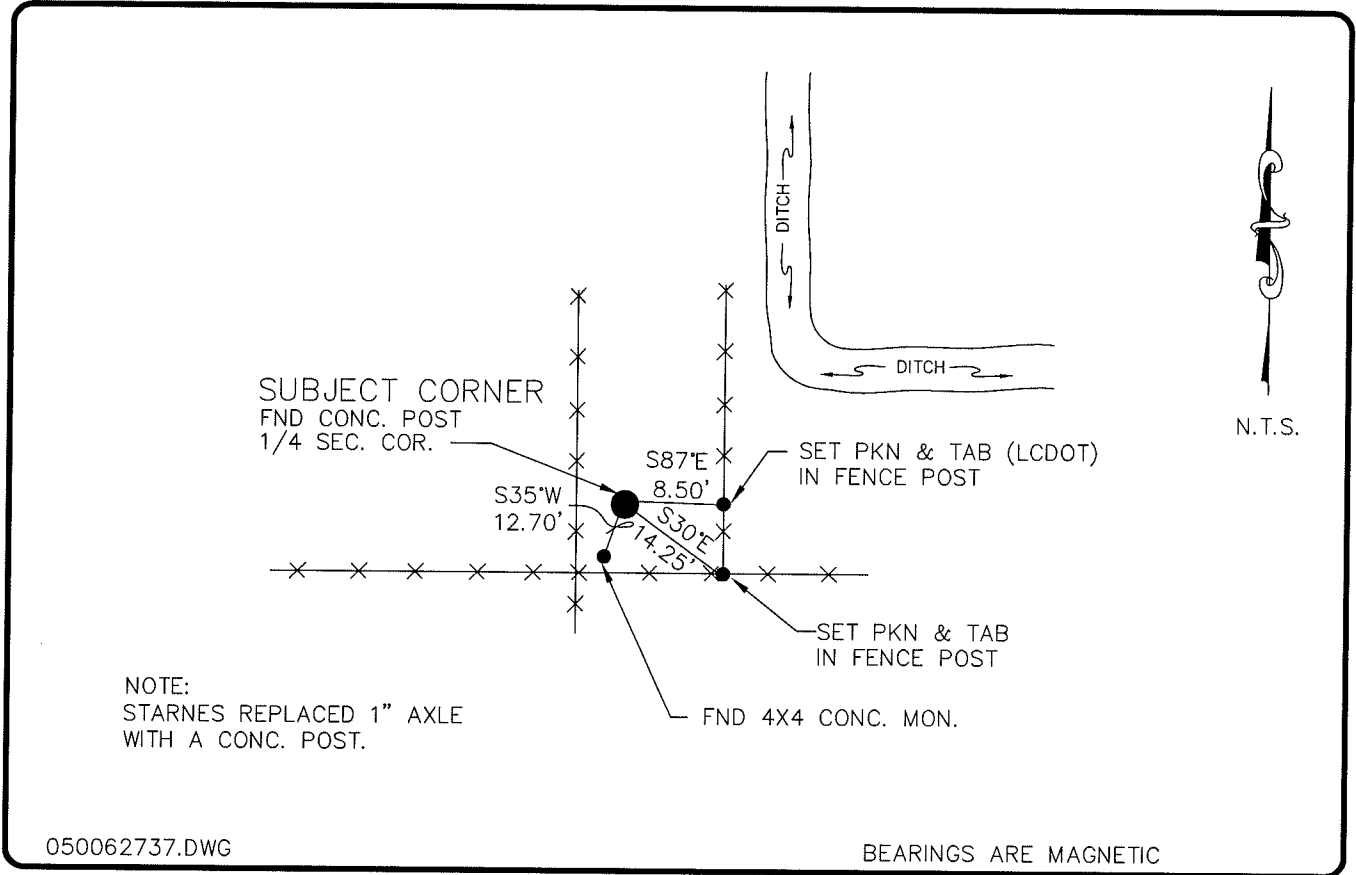


LAND CORNER RECORD

**PUBLIC WORKS
LEE COUNTY, FLORIDA**

Address - 1500 Monroe St., Ft. Myers, Fla. 33901

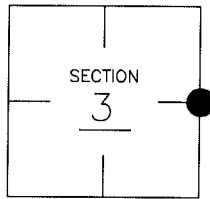
Phone : (239) 479-8900



COMMENTS:

CORNER DESCRIPTION

E 1/4 Corner
Section 3
Township 43
Range 25



STARNES FOUND A 1" AXLE AT 1/4 CORNER WITH A LITERWOOD POST LYING BESIDE AND SET REF. PTS.

HORIZONTAL POSITION INFORMATION

Florida West Zone, NAD 1983(1990 Adjustment)
 Northing(ft) 882928.46 Easting(ft) 723579.16
 Latitude 26°45'45.33290" Longitude 81°47'36.25433"
 Scale Factor 0.99994768

EXISTING CERTIFIED CORNER RECORDS

Document No.	Date
<u>36579</u>	<u>11-12-84</u>

The above documents are based on FDEP Bureau of Surveying and Mapping Record Information.

I hereby certify the monument and accessories shown above were field located on 12-20-04.

Arthur W. Parsons, County Surveyor
 Professional Surveyor and Mapper
 Florida Certificate No. 2987
 Date Signed 12-19-05

Lee County Department of Transportation
 1500 Monroe Street
 Fort Myers, Florida 33901
 Phone: (239) 479-8900

POINT NO. 161

BLM REFERENCE NO. T43SR25E500640