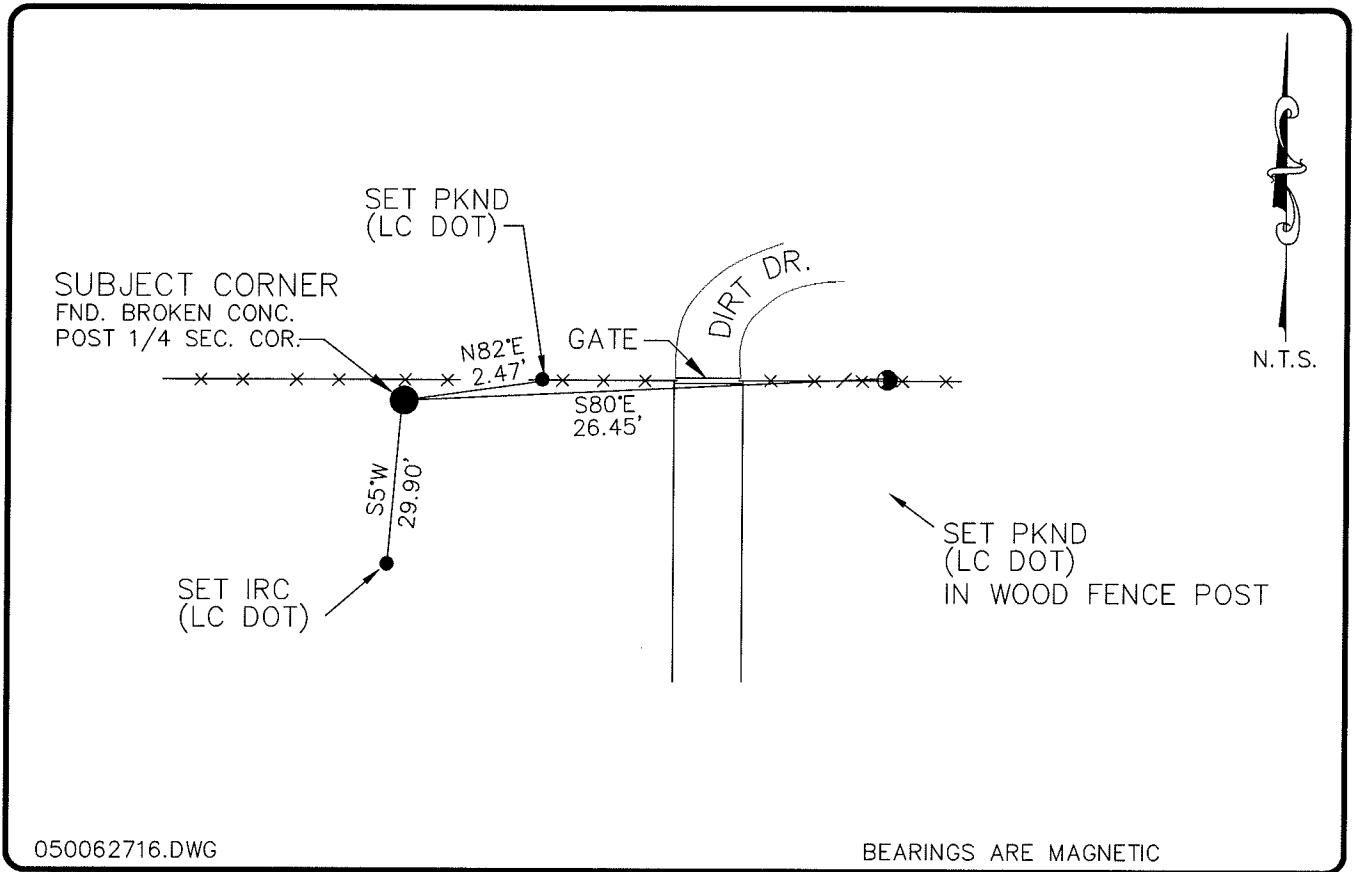


LAND CORNER RECORD

**PUBLIC WORKS
LEE COUNTY, FLORIDA**

Address - 1500 Monroe St., Ft. Myers, Fla. 33901

Phone : (239) 479-8900



050062716.DWG

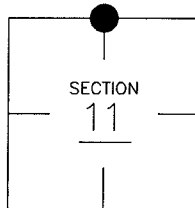
BEARINGS ARE MAGNETIC

COMMENTS:

DOCUMENT # SHOWS FOUND & BROKEN CONC. POST REPLACED WITH NEW CONC. POST (NOW BROKEN) STARNES INDICATED THAT CORNER WAS BROKEN.

CORNER DESCRIPTION

N 1/4 Corner
Section 11
Township 43
Range 25



HORIZONTAL POSITION INFORMATION

Florida West Zone, NAD 1983(1990 Adjustment)

Northing(ft) 880227.11 Easting(ft) 726242.36

Latitude 26°45'18.53563" Longitude 81°47'06.92179"

Scale Factor 0.99994680

EXISTING CERTIFIED CORNER RECORDS

Document No.	Date
<u>13825</u>	<u>11-20-81</u>
_____	_____
_____	_____
_____	_____

The above documents are based on FDEP Bureau of Surveying and Mapping Record Information.

I hereby certify the monument and accessories shown above were field located on 11-16-04.

Arthur W. Parsons, County Surveyor
Professional Surveyor and Mapper
Florida Certificate No. 2987
Date Signed 12-19-05

Lee County Department of Transportation
1500 Monroe Street
Fort Myers, Florida 33901
Phone: (239) 479-8900

POINT NO. 140

BLM REFERENCE NO. T43SR25E540600