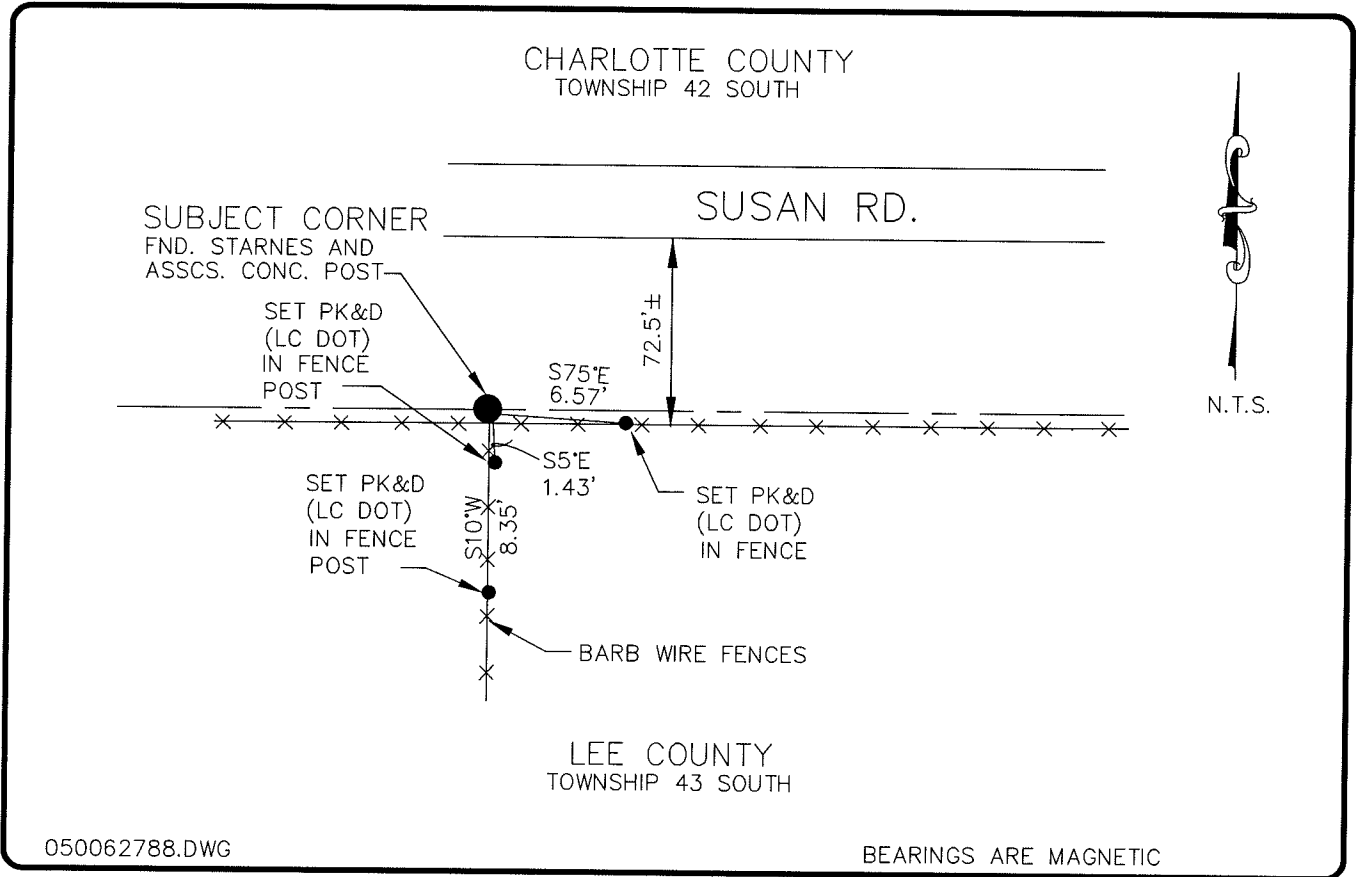


LAND CORNER RECORD

**PUBLIC WORKS
LEE COUNTY, FLORIDA**

Address - 1500 Monroe St., Ft. Myers, Fla. 33901

Phone : (239) 479-8900



050062788.DWG

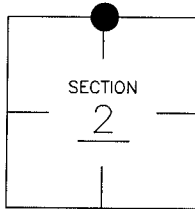
BEARINGS ARE MAGNETIC

COMMENTS:

CORNER DESCRIPTION

FOUND 4"x4" CONC. POST ACCEPTED AS 1/4 CORNER.

N 1/4 Corner
Section 2
Township 43
Range 25



HORIZONTAL POSITION INFORMATION

Florida West Zone, NAD 1983(1990 Adjustment)
Northing(ft) 885502.71 Easting(ft) 726251.19
Latitude 26°46'10.784100" Longitude 81°47'06.726557"
Scale Factor 0.99994680

EXISTING CERTIFIED CORNER RECORDS

Document No.	Date
84857	7-5-05

The above documents are based on FDEP Bureau of Surveying and Mapping Record Information.

I hereby certify the monument and accessories shown above were field located on 3-21-05.

(Signature)
Arthur W. Parsons, County Surveyor
Professional Surveyor and Mapper
Florida Certificate No. 2987
Date Signed 12-19-05

Lee County Department of Transportation
1500 Monroe Street
Fort Myers, Florida 33901
Phone: (239) 479-8900

POINT NO. 215

BLM REFERENCE NO. T43SR25E540700