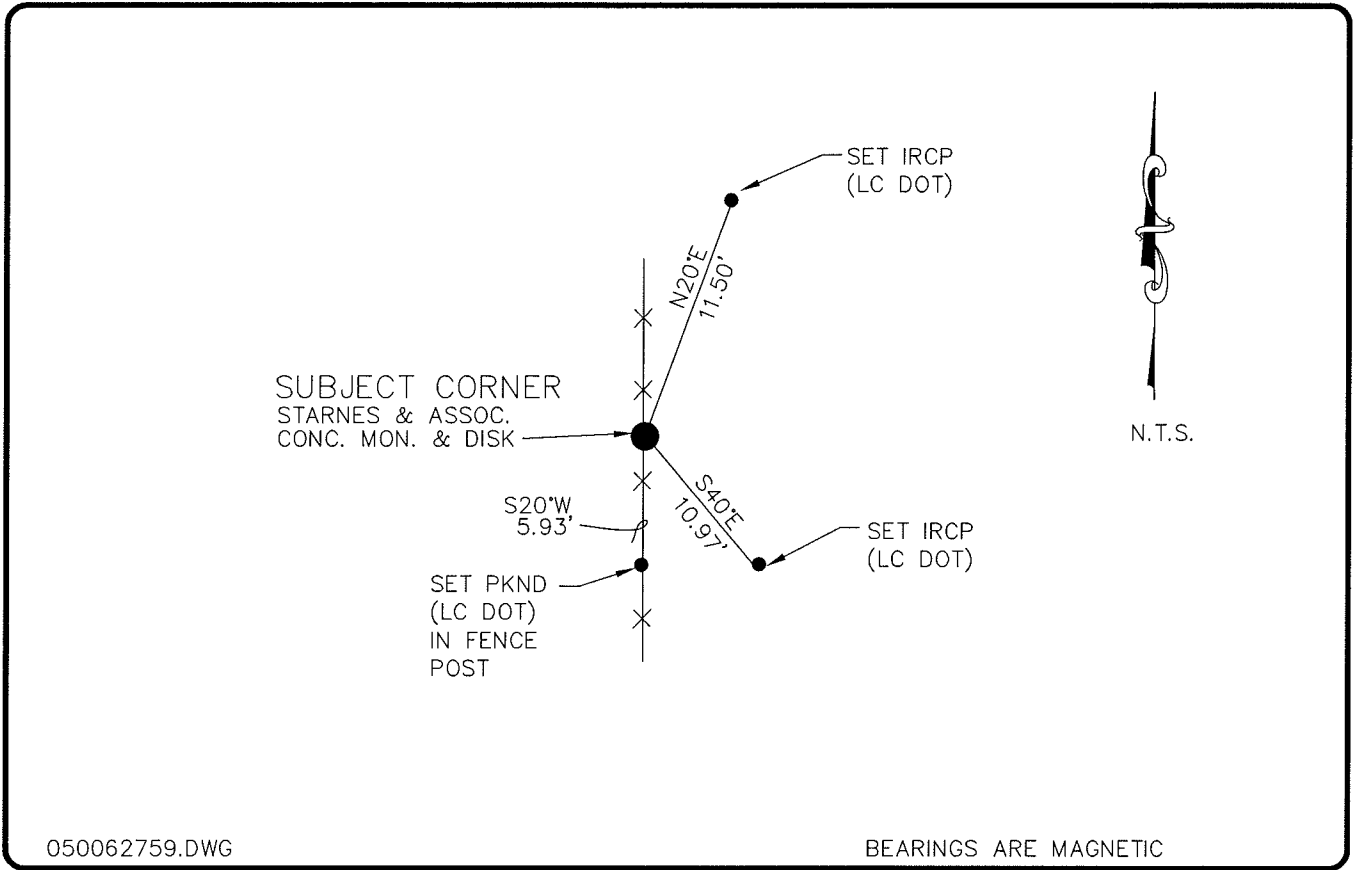


LAND CORNER RECORD

**PUBLIC WORKS
LEE COUNTY, FLORIDA**

Address - 1500 Monroe St., Ft. Myers, Fla. 33901

Phone : (239) 479-8900



050062759.DWG

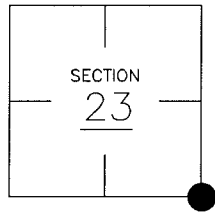
BEARINGS ARE MAGNETIC

COMMENTS:

JOE LUTZ RECOVERED OLD LITERWOOD POST IN 1980 FOR SE CORNER OF SECTION 23 AND WAS RECOVERED BY STARNES IN 1981 AND LATER REPLACED WITH A STARNES AND ASSCS. PLS2465 CONCRETE POST PRIOR TO 1990.

CORNER DESCRIPTION

SE Corner
Section 23
Township 43
Range 25



HORIZONTAL POSITION INFORMATION

Florida West Zone, NAD 1983(1990 Adjustment)
 Northing(ft) 864267.17 Easting(ft) 728825.41
 Latitude 26°42'40.42675" Longitude 81°46'38.73416"
 Scale Factor 0.99994722

EXISTING CERTIFIED CORNER RECORDS

Document No.	Date
<u>7721</u>	<u>7-30-80</u>
<u>13836</u>	<u>11-21-81</u>
<u>17904</u>	<u>NO IMAGE FOUND</u>
<u>35213</u>	<u>3-20-90</u>

The above documents are based on FDEP Bureau of Surveying and Mapping Record Information.

I hereby certify the monument and accessories shown above were field located on 11-30-04.

Arthur W. Parsons, County Surveyor
 Professional Surveyor and Mapper
 Florida Certificate No. 2987
 Date Signed 12-19-05

Lee County Department of Transportation
 1500 Monroe Street
 Fort Myers, Florida 33901
 Phone: (239) 479-8900

POINT NO. 146

BLM REFERENCE NO. T43SR25E600300