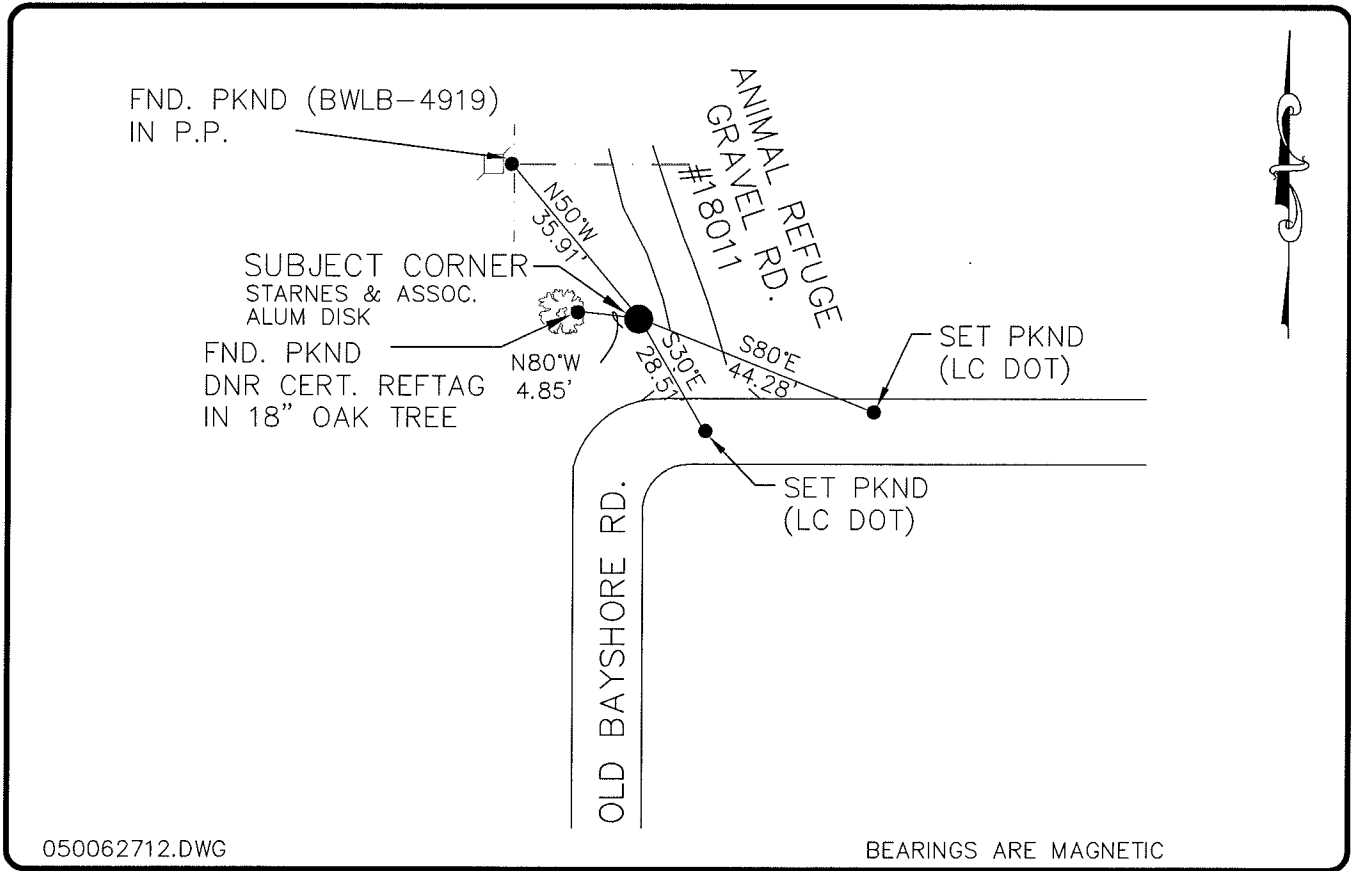


LAND CORNER RECORD

**PUBLIC WORKS
LEE COUNTY, FLORIDA**

Address - 1500 Monroe St., Ft. Myers, Fla. 33901

Phone : (239) 479-8900



050062712.DWG

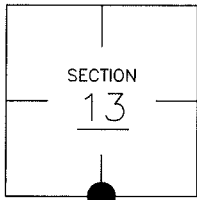
BEARINGS ARE MAGNETIC

COMMENTS:

STARNES FOUND A 1-1/4" PIPE. IN 1982. ACCORDING TO C.C.R. #14734, CORNER WAS LOCATED IN 1990 BY BEN HOLOMA AND DESCRIBED AS 1-1/4" PIPE 0.8' BELOW GROUND SURFACE, C.C.R. #35208, COR IS NOW A STARNES & ASSOCIATES ALUM. DISK

CORNER DESCRIPTION

S 1/4 Corner
Section 13
Township 43
Range 25



HORIZONTAL POSITION INFORMATION

Florida West Zone, NAD 1983(1990 Adjustment)
Northing(ft) 869540.80 Easting(ft) 731493.70
Latitude 26°43'36.60938" Longitude 81°46'09.20312"
Scale Factor 0.99994768

EXISTING CERTIFIED CORNER RECORDS

Document No.	Date
<u>14734</u>	<u>4-17-82</u>
<u>17907</u>	<u> </u>
<u>35208</u>	<u> </u>
<u>31990</u>	<u> </u>

The above documents are based on FDEP Bureau of Surveying and Mapping Record Information.

I hereby certify the monument and accessories shown above were field located on 11-01-04.

Arthur W. Parsons
Arthur W. Parsons, County Surveyor
Professional Surveyor and Mapper
Florida Certificate No. 2987
Date Signed 12-19-05

Lee County Department of Transportation
1500 Monroe Street
Fort Myers, Florida 33901
Phone: (239) 479-8900

POINT NO. 137

BLM REFERENCE NO. T43SR25E640400