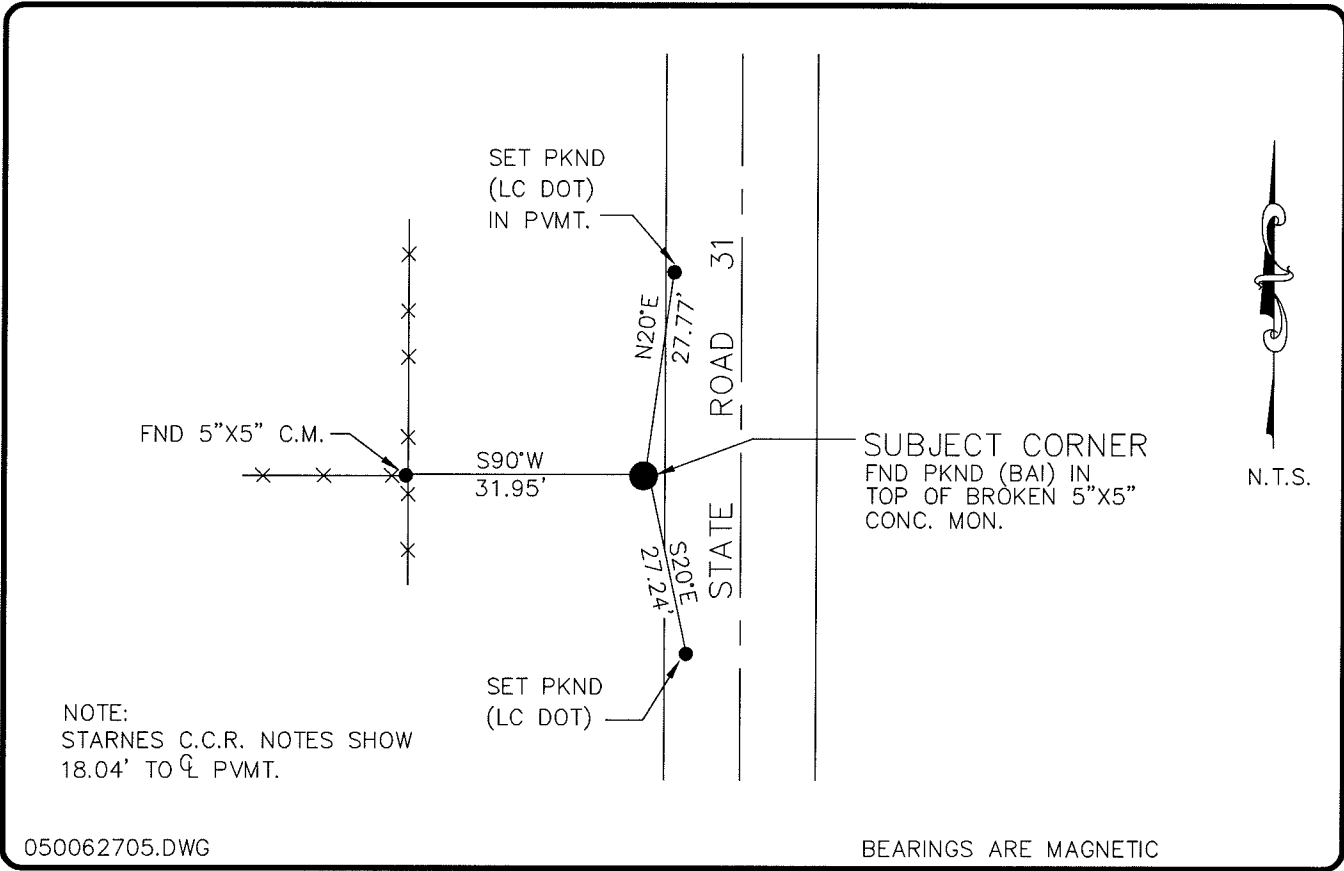


**LAND CORNER RECORD**

**PUBLIC WORKS  
LEE COUNTY, FLORIDA**

Address - 1500 Monroe St., Ft. Myers, Fla. 33901

Phone : (239) 479-8900

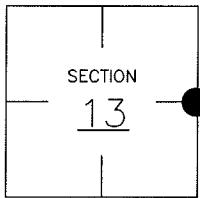


**COMMENTS:**

STARNES FOUND 5"x5" CONC. MON., AND SET REFERENCE POINTS IN 1985. HAS BEEN ACCEPTED LOCALLY AS 1/4 CORNER. ORIGINAL NOTES BY JACKSON IN 1859.

**CORNER DESCRIPTION**

E 1/4 Corner  
Section 13  
Township 43  
Range 25



**HORIZONTAL POSITION INFORMATION**

Florida West Zone, NAD 1983(1990 Adjustment)  
Northing(ft) 872186.33 Easting(ft) 734156.64  
Latitude 26°43'58.76152" Longitude 81°45'37.77878"  
Scale Factor 0.99994815

**EXISTING CERTIFIED CORNER RECORDS**

Document No.	Date
<u>36580</u>	<u>4-3-85</u>

The above documents are based on FDEP Bureau of Surveying and Mapping Record Information.

I hereby certify the monument and accessories shown above were field located on 11-1-04.

**Arthur W. Parsons, County Surveyor**  
Professional Surveyor and Mapper  
Florida Certificate No. 2987  
Date Signed 12-19-05

Lee County Department of Transportation  
1500 Monroe Street  
Fort Myers, Florida 33901  
Phone: (239) 479-8900

POINT NO. 131

BLM REFERENCE NO. T43SR25E700440