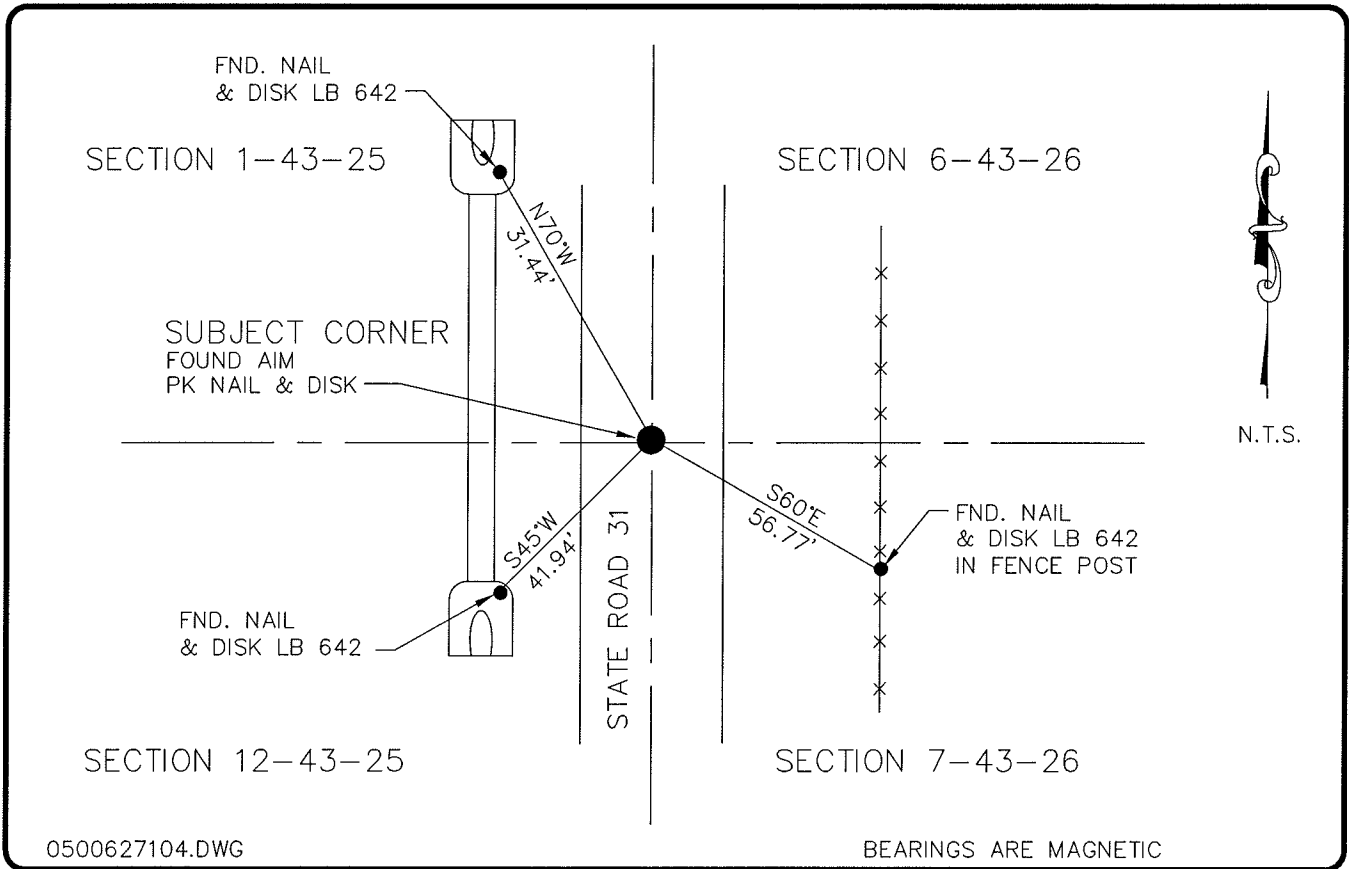


LAND CORNER RECORD

**PUBLIC WORKS
LEE COUNTY, FLORIDA**

Address - 1500 Monroe St., Ft. Myers, Fla. 33901

Phone : (239) 479-8900



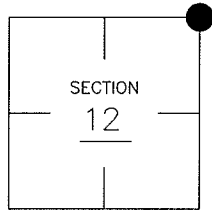
0500627104.DWG

BEARINGS ARE MAGNETIC

COMMENTS:

CORNER DESCRIPTION

NE Corner
Section 12
Township 43
Range 25



FOUND AIM PK NAIL AND DISK AT SECTION CORNER. STARNES SHOWS A RAILROAD SPIKE BEING REPLACED WITH AN IRON PIN. PRESENT LOCATION FITS STARNES SECTION DRAWING.

HORIZONTAL POSITION INFORMATION

Florida West Zone, NAD 1983(1990 Adjustment)
 Northing(ft) 880180.88 Easting(ft) 734198.45
 Latitude 26°45'17.93727" Longitude 81°45'39.15195'
 Scale Factor 0.99994815

EXISTING CERTIFIED CORNER RECORDS

| Document No. | Date |
|--------------|------|
| NONE FOUND | |
| | |
| | |
| | |
| | |

The above documents are based on FDEP Bureau of Surveying and Mapping Record Information.

I hereby certify the monument and accessories shown above were field located on 12-14-05.

(Signature)
Arthur W. Parsons, County Surveyor
 Professional Surveyor and Mapper
 Florida Certificate No. 2987
 Date Signed 1-17-06

Lee County Department of Transportation
 1500 Monroe Street
 Fort Myers, Florida 33901
 Phone: (239) 479-8900

POINT NO. 50

BLM REFERENCE NO. T43SR25E700600