

FLORIDA DEPARTMENT OF ENVIRONMENTAL PROTECTION
CERTIFIED CORNER RECORD

15

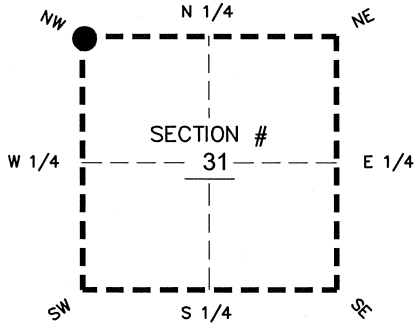
DOC. # _____
 BLM. # T43SR26E100200

CORNER DESCRIPTION:

MONUMENTATION DESCRIPTION (EVIDENCE FOUND OR METHOD TO SET)

Depict corner with ●

SET PK & DISK AIM ENG LB 3114, CORNER ESTABLISHED USING
 COORDINATE VALUES PER CCR DOC# 035217 ADJUSTING VALVES FROM
 NAD83 (NO ADJUSTMENT) TO 2007, AND C.O.E. CANAL C-43 R/W MAPS



PRIOR CCR'S:

DOC. # 034655, 035217

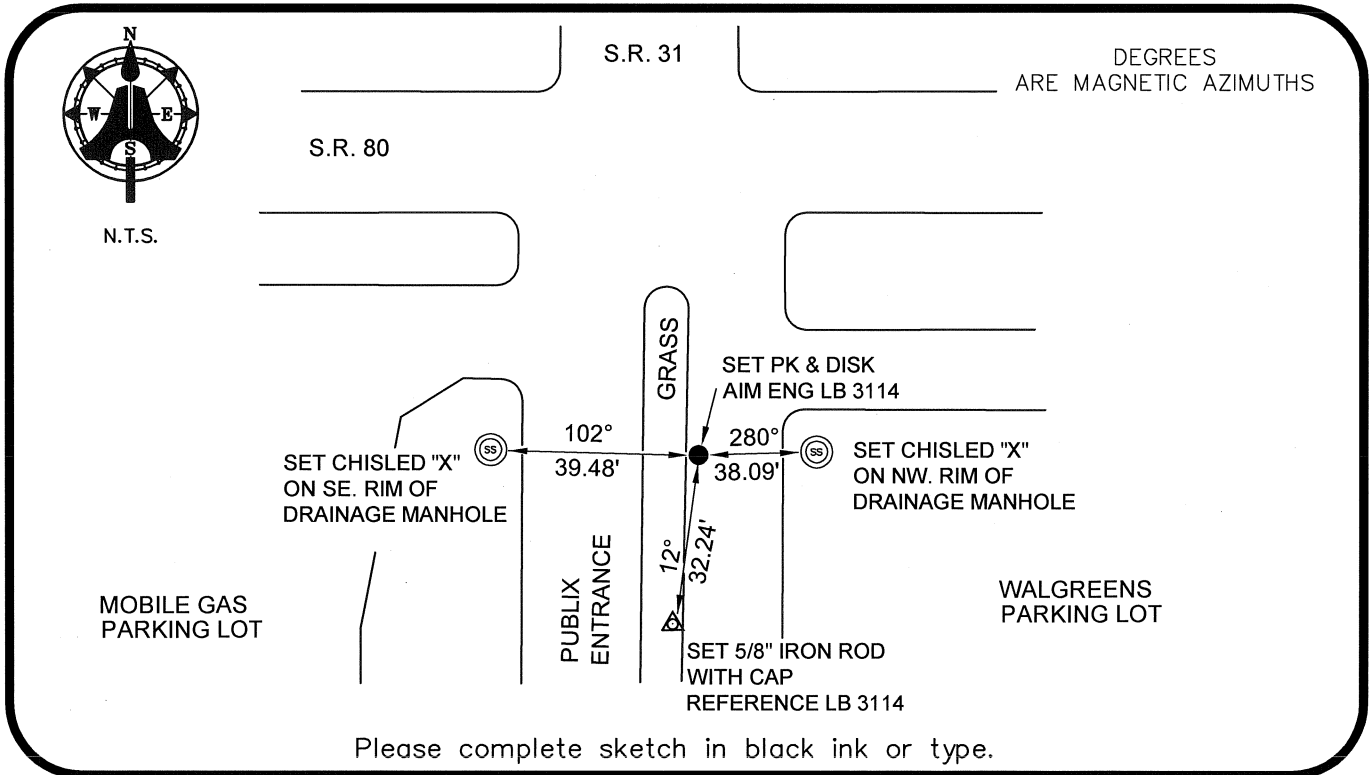
HORIZONTAL POSITION INFORMATION (if determined):

Latitude 26°42'01.5919" N Longitude 81°45'36.5778" W
 Y(NORTHING-Ft.) 860356.20 X(EASTING-Ft.) 734469.11 Zone WEST
 Convergence 00°06'28.0" Scale factor 0.99994821

NW corner of Section 31
 Twp 43 S, Rge 26 E
 Tallahassee Base Meridian,
 LEE County(s), Florida

Coordinate determination: GPS
 Horizontal datum: NAD83(NSRS2007)

Accuracy (circle one): 1st 2nd 3rd other 1:35,000



SURVEYORS CERTIFICATE:

I certify the monument and accessories indicated above were field located on 07-31-2008

BEN R. HOMOLA

Ben R. Homola

3950

SIGNATURE

PSM NO.

AIM ENGINEERING & SURVEYING, INC.

3114

FIRM OR AGENCY

LB NO.

5300 LEE BOULEVARD

LEHIGH ACRES

ADDRESS

FL

33971

CITY

STATE

ZIP

(239)332-4569

08/04/2008

PHONE NUMBER

DATE

EMBOSSSED SEAL OVER SIGNATURE

SEND ORIGINAL TO:
 Department of Environmental Protection
 Bureau of Surveying and Mapping
 3900 Commonwealth Boulevard
 Mail Station 105
 Tallahassee, Florida 32399

D.E.P. USE ONLY	
Processed:	_____
B.L.M. - I.D.	_____
QUAD - I.D.	_____