


FLORIDA DEPARTMENT OF ENVIRONMENTAL PROTECTION  
CERTIFIED CORNER RECORD

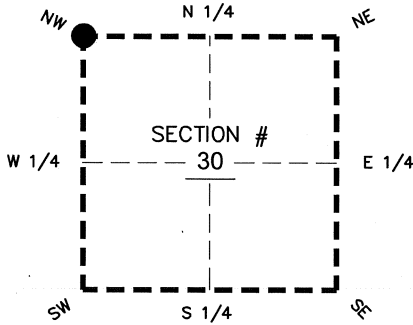
27

DOC. # \_\_\_\_\_  
 BLM. # T43SR26E100300

CORNER DESCRIPTION:      MONUMENTATION DESCRIPTION (EVIDENCE FOUND OR METHOD TO SET)

Depict corner with 

FOUND 3.5"x3.5" CONCRETE MONUMENT WITH  
 STARNES & ASSOC. INC. ALUMINUM DISK  
 FLUSH WITH GROUND



PRIOR CCR'S:

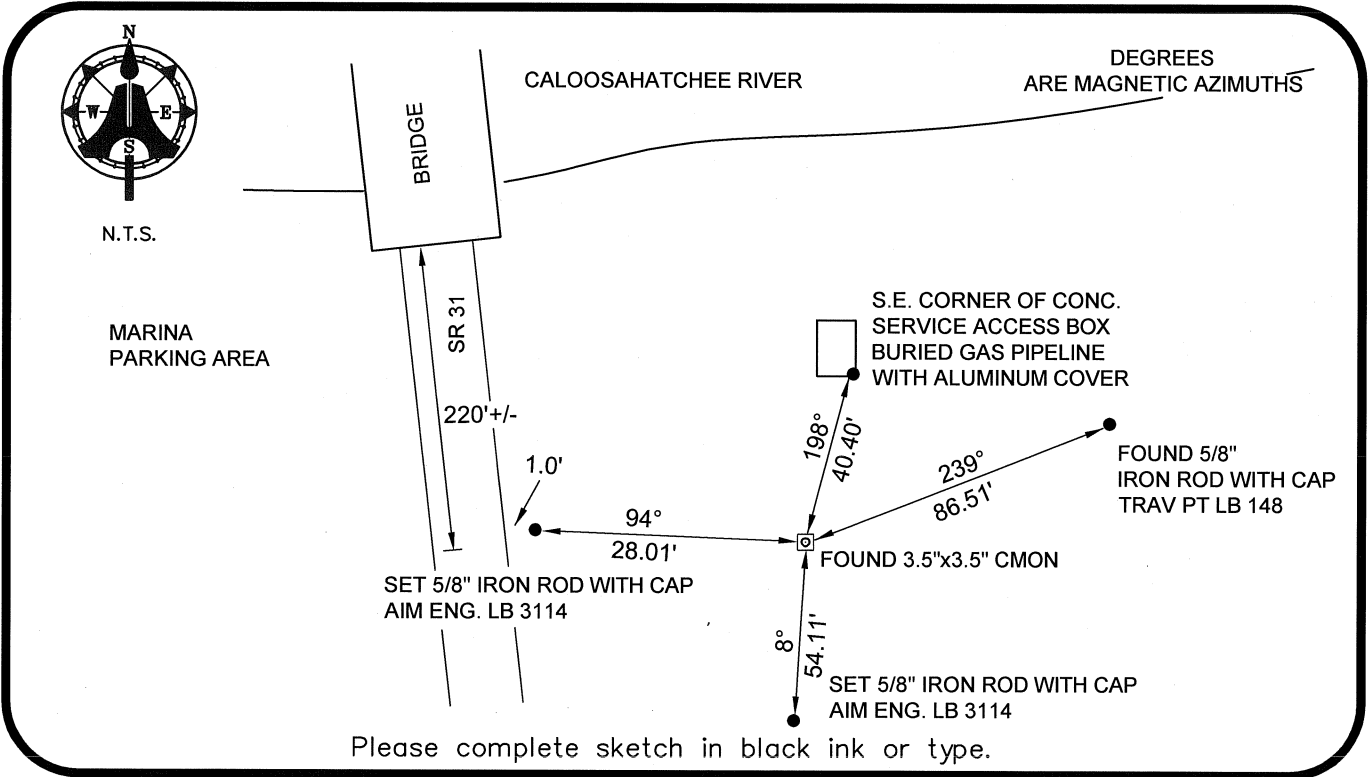
DOC. # 35206

HORIZONTAL POSITION INFORMATION ( if determined ):

Latitude 26°42'53.9661" N      Longitude 81°45'37.1909" W  
 Y(NORTHING-Ft.) 865644.34      X(EASTING-Ft.) 734403.57      Zone WEST  
 Convergence 00°06'27.9"      Scale factor 0.99994819

NW corner of Section 30  
 Twp 43 S, Rge 26 E  
 Tallahassee Base Meridian,  
LEE County(s), Florida

Coordinate determination: GPS  
 Horizontal datum: NAD83(NSRS2007)  
 Accuracy (circle one):      1st      2nd      3rd      other 1:35,000



SURVEYORS CERTIFICATE:

I certify the monument and accessories indicated above were field located on 03-06-2008

BEN R. HOMOLA

*Ben R. Homola*      3950  
 SIGNATURE      PSM NO.  
 AIM ENGINEERING & SURVEYING, INC.      3114  
 FIRM OR AGENCY      LB NO.

5300 LEE BOULEVARD  
 LEHIGH ACRES      ADDRESS      FL      33971

(239)332-4569      CITY      STATE      ZIP  
 PHONE NUMBER      DATE      07/30/2008

EMBOSSSED SEAL OVER SIGNATURE

SEND ORIGINAL TO:  
 Department of Environmental Protection  
 Bureau of Surveying and Mapping  
 3900 Commonwealth Boulevard  
 Mail Station 105  
 Tallahassee, Florida 32399

D.E.P. USE ONLY	
Processed:	_____
B.L.M. - I.D.	_____
QUAD - I.D.	_____