

FLORIDA DEPARTMENT OF ENVIRONMENTAL PROTECTION

CERTIFIED CORNER RECORD

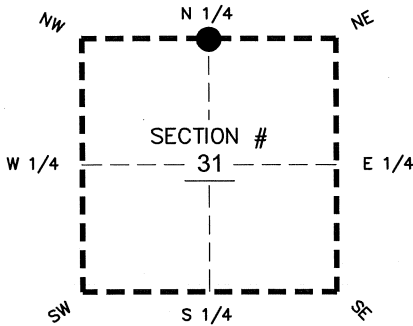
120

DOC. # _____
 BLM. # T43SR26E140200

CORNER DESCRIPTION: **MONUMENTATION DESCRIPTION (EVIDENCE FOUND OR METHOD TO SET)**

Depict corner with

CORNER NOT SET-FALLS IN LAKE, CORNER ESTABLISHED PER BOUNDARY SURVEY DONE FOR BONITA BAY "VERANDAH" BY JOHNSON ENGINEERING, INC. DATED JULY 1999



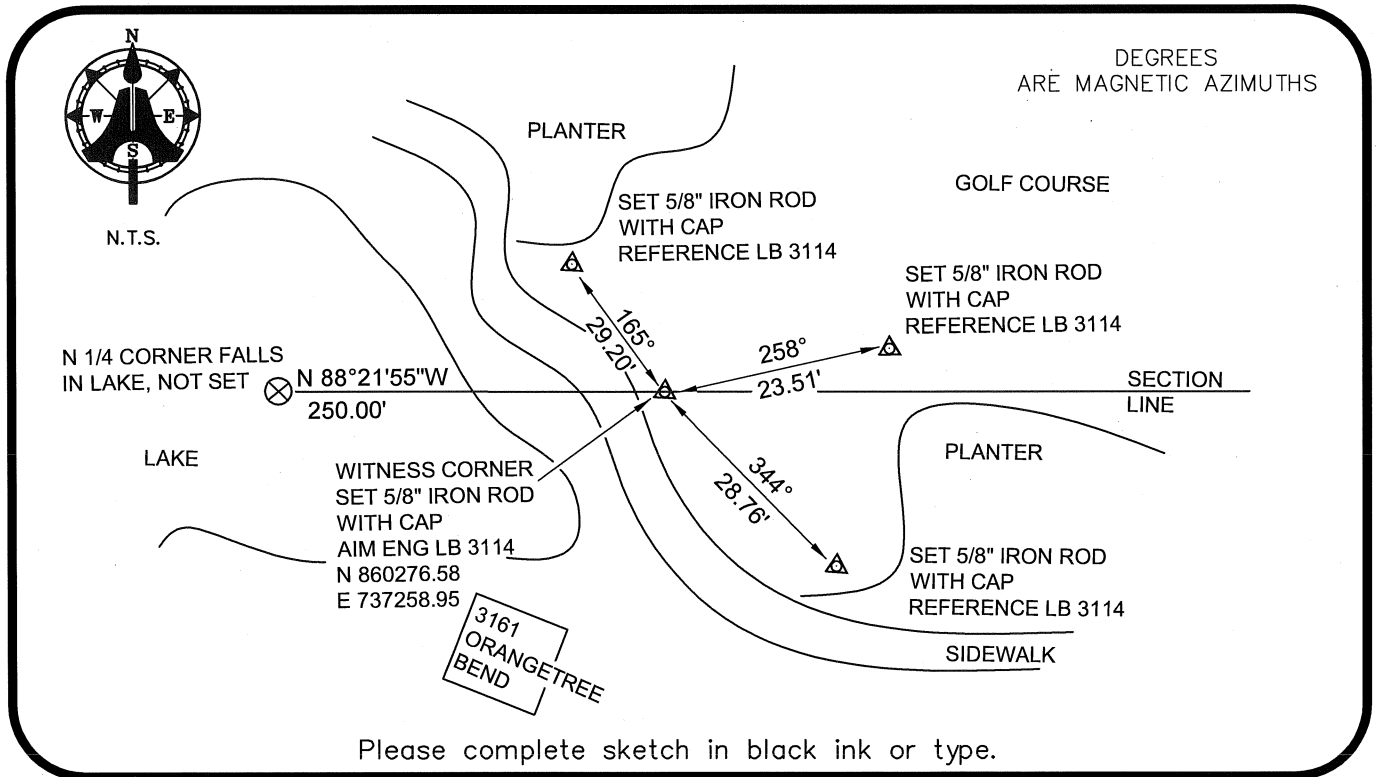
N 1/4 corner of Section 31
 Twp 43 S, Rge 26 E
 Tallahassee Base Meridian,
LEE County(s), Florida

PRIOR CCR'S:

DOC. # N/A

HORIZONTAL POSITION INFORMATION (if determined):

Latitude 26°42'00.8259" N Longitude 81°45'08.5723" W
 Y(NORTHING-Ft.) 860283.71 X(EASTING-Ft.) 737009.05 Zone WEST
 Convergence 00°06'40.5" Scale factor 0.99994867
 Coordinate determination: GPS
 Horizontal datum: NAD83(NSRS2007)
 Accuracy (circle one): 1st 2nd 3rd other 1:35,000



SURVEYORS CERTIFICATE:

I certify the monument and accessories indicated above were field located on 07-31-2008

BEN R. HOMOLA

Ben R. Homola 3950
 SIGNATURE PSM NO.
 AIM ENGINEERING & SURVEYING, INC. 3114
 FIRM OR AGENCY LB NO.
 5300 LEE BOULEVARD
 LEHIGH ACRES ADDRESS FL 33971
 CITY STATE ZIP
 (239)332-4569 08/04/2008 DATE
 PHONE NUMBER DATE

SEND ORIGINAL TO:
 Department of Environmental Protection
 Bureau of Surveying and Mapping
 3900 Commonwealth Boulevard
 Mail Station 105
 Tallahassee, Florida 32399

D.E.P. USE ONLY
Processed: _____
B.L.M. - I.D. _____
QUAD - I.D. _____

EMBOSSSED SEAL OVER SIGNATURE