


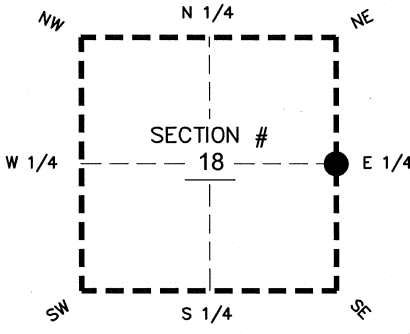
FLORIDA DEPARTMENT OF ENVIRONMENTAL PROTECTION CERTIFIED CORNER RECORD

DOC. # _____
BLM. # T43SR26E200440

CORNER DESCRIPTION: MONUMENTATION DESCRIPTION (EVIDENCE FOUND OR METHOD TO SET)

Depict corner with 

FOUND 3"x3" CONCRETE MONUMENT WITH 3/8" IRON ROD
TOP BROKEN, BASE IN GOOD CONDITION, 0.2' BELOW GROUND



PRIOR CCR'S:

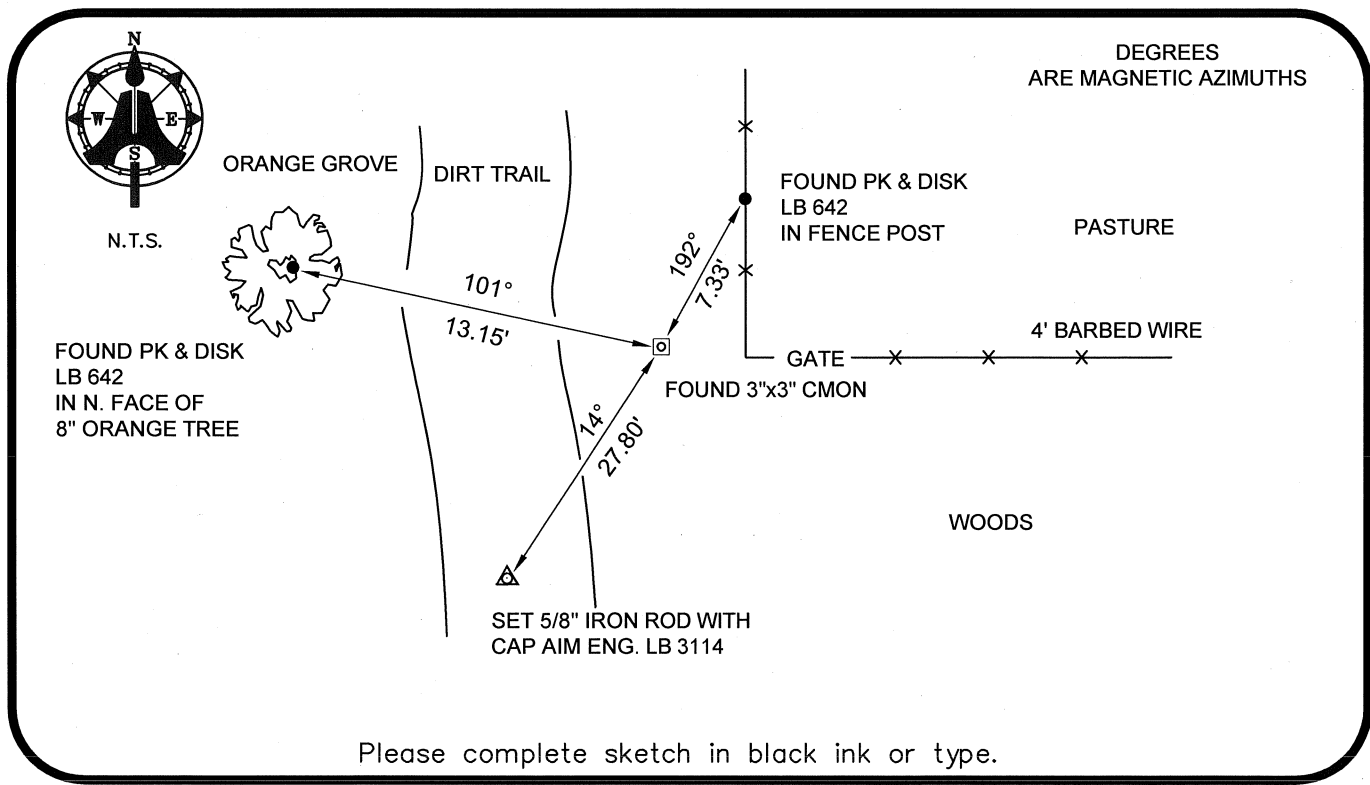
DOC. # NONE

HORIZONTAL POSITION INFORMATION (if determined):

Latitude 26°43'57.6265" N Longitude 81°44'43.0714" W
Y(NORTHING-Ft.) 872081.69 X(EASTING-Ft.) 739298.13 Zone WEST
Convergence 00°06'52.5" Scale factor 0.99994910

E 1/4 corner of Section 18
Twp 43 S, Rge 26 E
Tallahassee Base Meridian,
LEE County(s), Florida

Coordinate determination: GPS
Horizontal datum: NAD83(NSRS2007)
Accuracy (circle one): 1st 2nd 3rd other 1:35,000



Please complete sketch in black ink or type.

SURVEYORS CERTIFICATE:

I certify the monument and accessories indicated above were field located on 03-17-2008

BEN R. HOMOLA

 3950

SIGNATURE AIM ENGINEERING & SURVEYING, INC. PSM NO. 3114

FIRM OR AGENCY 5300 LEE BOULEVARD ADDRESS FL 33971

CITY LEHIGH ACRES STATE FL ZIP 33971

PHONE NUMBER (239)332-4569 DATE 07/30/2008

EMBOSSSED SEAL OVER SIGNATURE

SEND ORIGINAL TO:
Department of Environmental Protection
Bureau of Surveying and Mapping
3900 Commonwealth Boulevard
Mail Station 105
Tallahassee, Florida 32399

D.E.P. USE ONLY
Processed: _____
B.L.M. - I.D. _____
QUAD - I.D. _____