

# FLORIDA DEPARTMENT OF ENVIRONMENTAL PROTECTION

## CERTIFIED CORNER RECORD

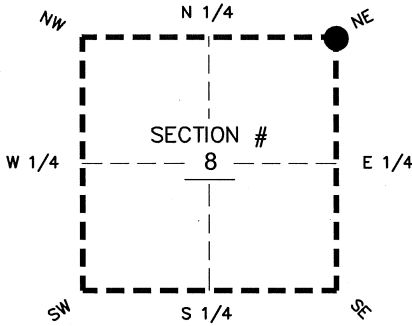
72

DOC. # \_\_\_\_\_  
 BLM. # T43SR26E300600

**CORNER DESCRIPTION:**      **MONUMENTATION DESCRIPTION (EVIDENCE FOUND OR METHOD TO SET)**

Depict corner with

FOUND 3.5"x3.5" CONCRETE MONUMENT, NO ID, 0.7' WEST OF FENCE CORNER, PROJECTS 2.5' ABOVE GROUND



**PRIOR CCR'S:**

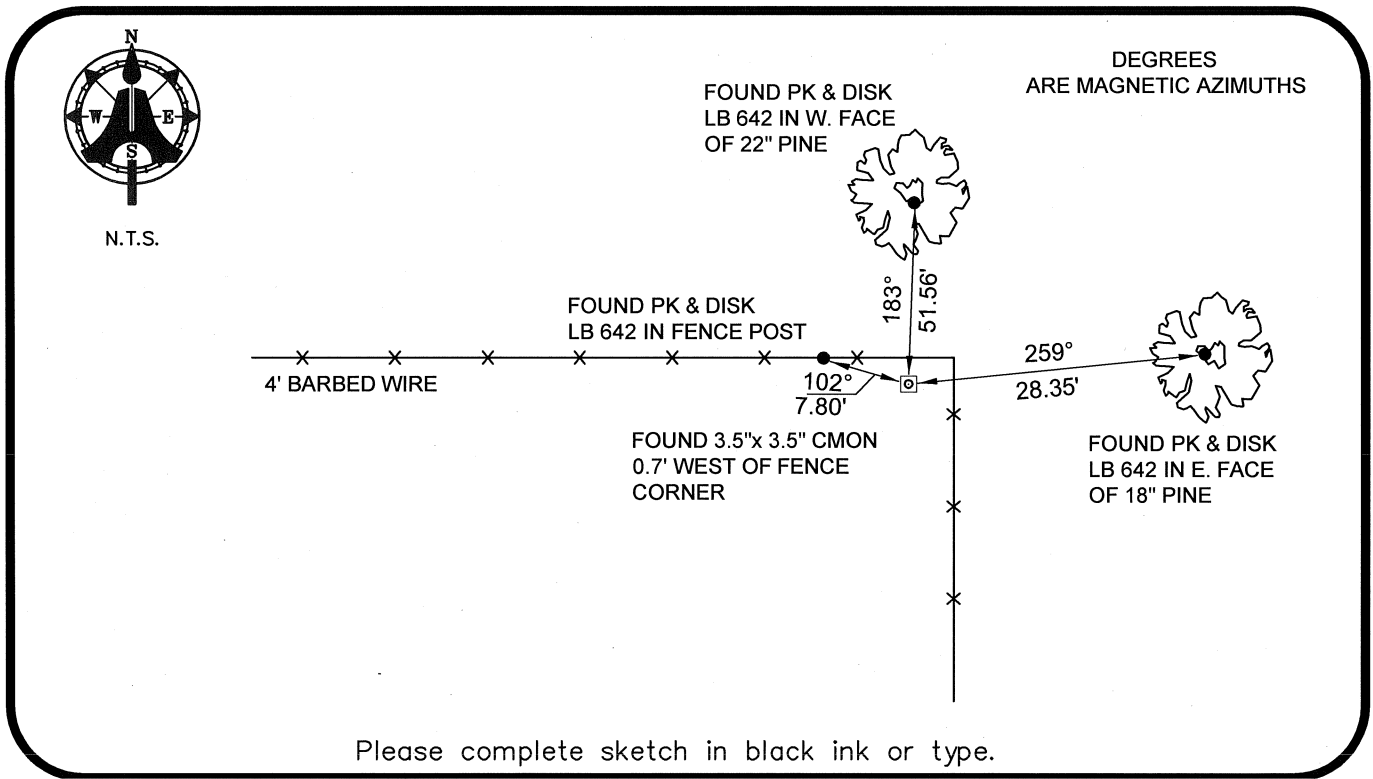
DOC. # 089414

**HORIZONTAL POSITION INFORMATION ( if determined ):**

Latitude 26°45'16.6375" N      Longitude 81°43'43.4501" W  
 Y(NORTHING-Ft.) 880070.67      X(EASTING-Ft.) 744686.60      Zone WEST  
 Convergence 00°07'19.6"      Scale factor 0.99995016

NE corner of Section 8  
 Twp 43 S, Rge 26 E  
 Tallahassee Base Meridian,  
LEE County(s), Florida

Coordinate determination: GPS  
 Horizontal datum: NAD83(NSRS2007)  
 Accuracy (circle one):      1st      2nd      3rd      other 1:35,000



**SURVEYORS CERTIFICATE:**

I certify the monument and accessories indicated above were field located on 04-22-2008

BEN R. HOMOLA

*Ben R. Homola*      3950  
 SIGNATURE      PSM NO.

AIM ENGINEERING & SURVEYING, INC.      3114  
 FIRM OR AGENCY      LB NO.

5300 LEE BOULEVARD  
 LEHIGH ACRES      ADDRESS      FL      33971

(239)332-4569      CITY      STATE      ZIP  
 07/30/2008      DATE

EMBOSSSED SEAL OVER SIGNATURE

SEND ORIGINAL TO:  
 Department of Environmental Protection  
 Bureau of Surveying and Mapping  
 3900 Commonwealth Boulevard  
 Mail Station 105  
 Tallahassee, Florida 32399

D.E.P. USE ONLY	
Processed:	_____
B.L.M. - I.D.	_____
QUAD - I.D.	_____