

FLORIDA DEPARTMENT OF ENVIRONMENTAL PROTECTION

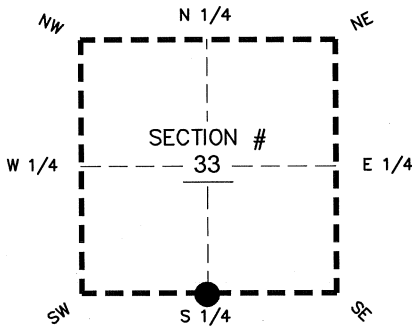
CERTIFIED CORNER RECORD

170

DOC. # _____
 BLM. # T43SR26E340100

CORNER DESCRIPTION:

Depict corner with _____



S 1/4 corner of Section 33
 Twp 43 S, Rge 26 E
 Tallahassee Base Meridian,
LEE County(s), Florida

MONUMENTATION DESCRIPTION (EVIDENCE FOUND OR METHOD TO SET)

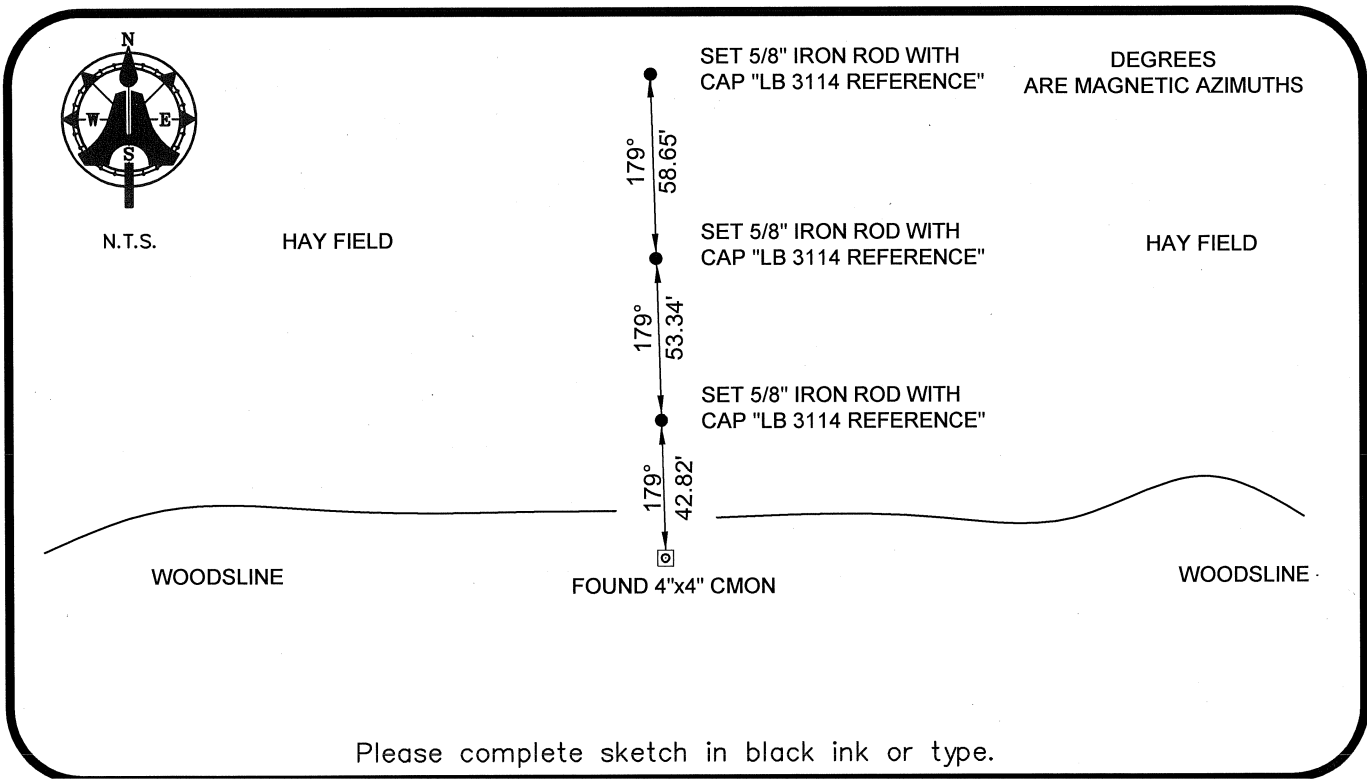
FOUND 4"x4" CONCRETE MONUMENT WITH ALUMINUM DISK "PRM LB 734"
 PROJECTS 0.1' ABOVE GROUND

PRIOR CCR'S:

DOC. # N/A

HORIZONTAL POSITION INFORMATION (if determined):

Latitude 26°41'08.6189" N Longitude 81°43'12.5100" W
 Y(NORTHING-Ft.) 855034.12 X(EASTING-Ft.) 747546.20 Zone WEST
 Convergence 00°07'32.5" Scale factor 0.99995075
 Coordinate determination: GPS
 Horizontal datum: NAD83(NSRS2007)
 Accuracy (circle one): 1st 2nd 3rd other 1:35,000



SURVEYORS CERTIFICATE:

I certify the monument and accessories indicated above were field located on 07-16-2008

BEN R. HOMOLA

Ben R. Homola _____ 3950
 SIGNATURE PSM NO.
 AIM ENGINEERING & SURVEYING, INC. 3114
 FIRM OR AGENCY LB NO.
 5300 LEE BOULEVARD
 LEHIGH ACRES ADDRESS FL 33971
 (239)332-4569 CITY STATE ZIP
 PHONE NUMBER DATE 07/30/2008

SEND ORIGINAL TO:
 Department of Environmental Protection
 Bureau of Surveying and Mapping
 3900 Commonwealth Boulevard
 Mail Station 105
 Tallahassee, Florida 32399

D.E.P. USE ONLY
Processed: _____
B.L.M. - I.D. _____
QUAD - I.D. _____

EMBOSSSED SEAL OVER SIGNATURE