


FLORIDA DEPARTMENT OF ENVIRONMENTAL PROTECTION CERTIFIED CORNER RECORD

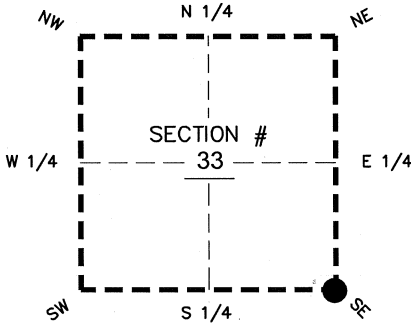
DOC. # _____

BLM. # T43SR26E400100

CORNER DESCRIPTION: MONUMENTATION DESCRIPTION (EVIDENCE FOUND OR METHOD TO SET)

Depict corner with 

**FOUND 4"x4" CONCRETE MONUMENT WITH DISK PRM LB 743
0.6' BELOW GROUND**



SE corner of Section 33
Twp 43 S, Rge 26 E
Tallahassee Base Meridian,
LEE County(s), Florida

PRIOR CCR'S:

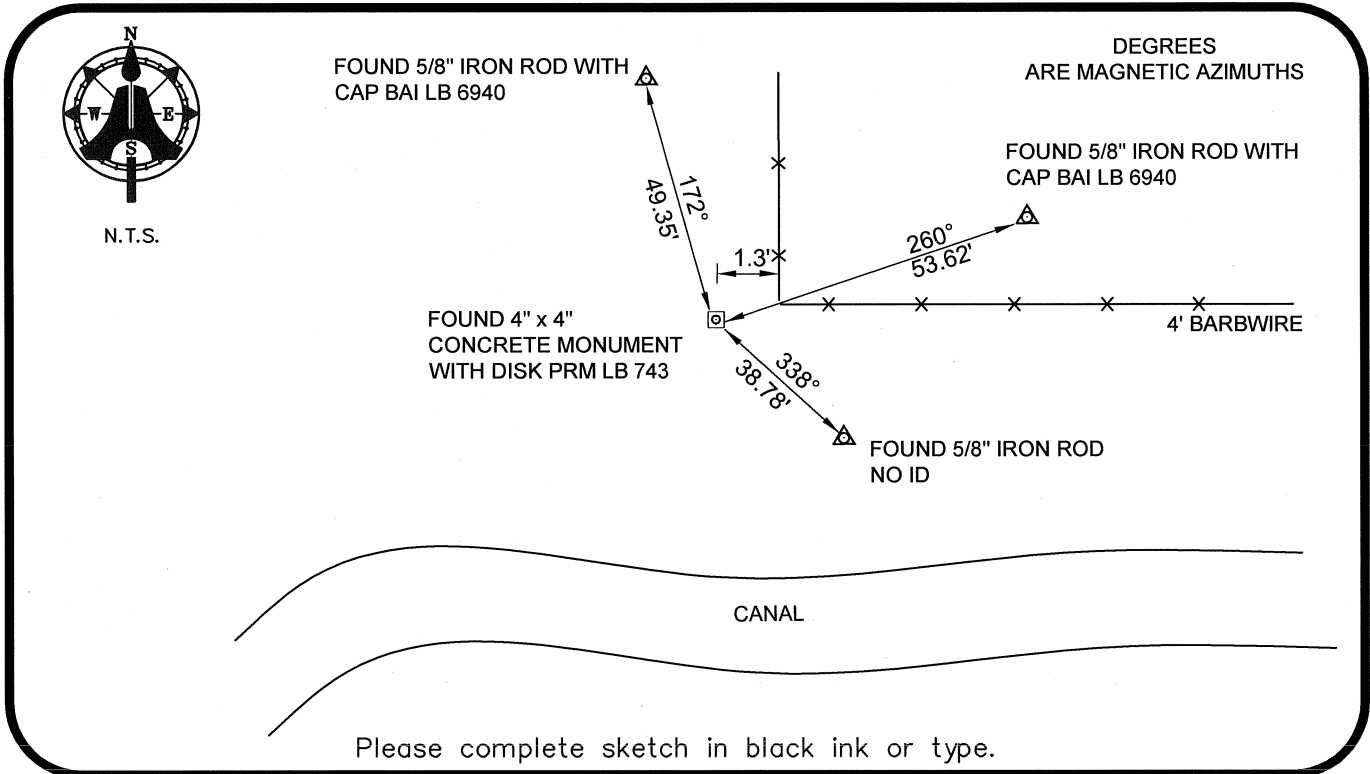
DOC. # 083356

HORIZONTAL POSITION INFORMATION (if determined):

Latitude 26°41'08.9672" N Longitude 81°42'43.3232" W
Y(NORTHING-Ft.) 855075.17 X(EASTING-Ft.) 750193.38 Zone WEST
Convergence 00°07'45.6" Scale factor 0.99995131

Coordinate determination: GPS
Horizontal datum: NAD83(NSRS2007)

Accuracy (circle one): 1st 2nd 3rd other 1:35,000



SURVEYORS CERTIFICATE:

I certify the monument and accessories indicated above were field located on 02-20-2008

BEN R. HOMOLA

Ben R. Homola
SIGNATURE
AIM ENGINEERING & SURVEYING, INC. 3114
FIRM OR AGENCY PSM NO.
5300 LEE BOULEVARD LB NO.

LEHIGH ACRES ADDRESS FL 33971

(239)332-4569 PHONE NUMBER
07/30/2008 DATE
STATE ZIP

EMBOSSSED SEAL OVER SIGNATURE

SEND ORIGINAL TO:
Department of Environmental Protection
Bureau of Surveying and Mapping
3900 Commonwealth Boulevard
Mail Station 105
Tallahassee, Florida 32399

D.E.P. USE ONLY	
Processed:	_____
B.L.M. - I.D.	_____
QUAD - I.D.	_____