

FLORIDA DEPARTMENT OF ENVIRONMENTAL PROTECTION
CERTIFIED CORNER RECORD

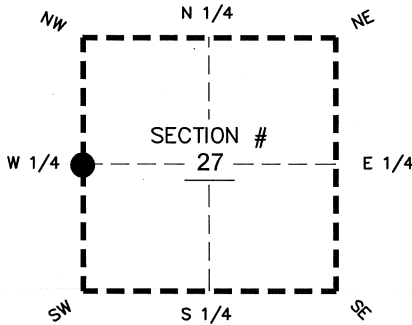
24

DOC. # _____
 BLM. # T43SR26E400240

CORNER DESCRIPTION: MONUMENTATION DESCRIPTION (EVIDENCE FOUND OR METHOD TO SET)

Depict corner with

SET 5/8" IRON ROD WITH CAP AIM ENG LB 3114
 USING COORDINATE VALUES PER CCR DOC #083351
 ADJUSTING VALUES FROM 1990 TO 2007



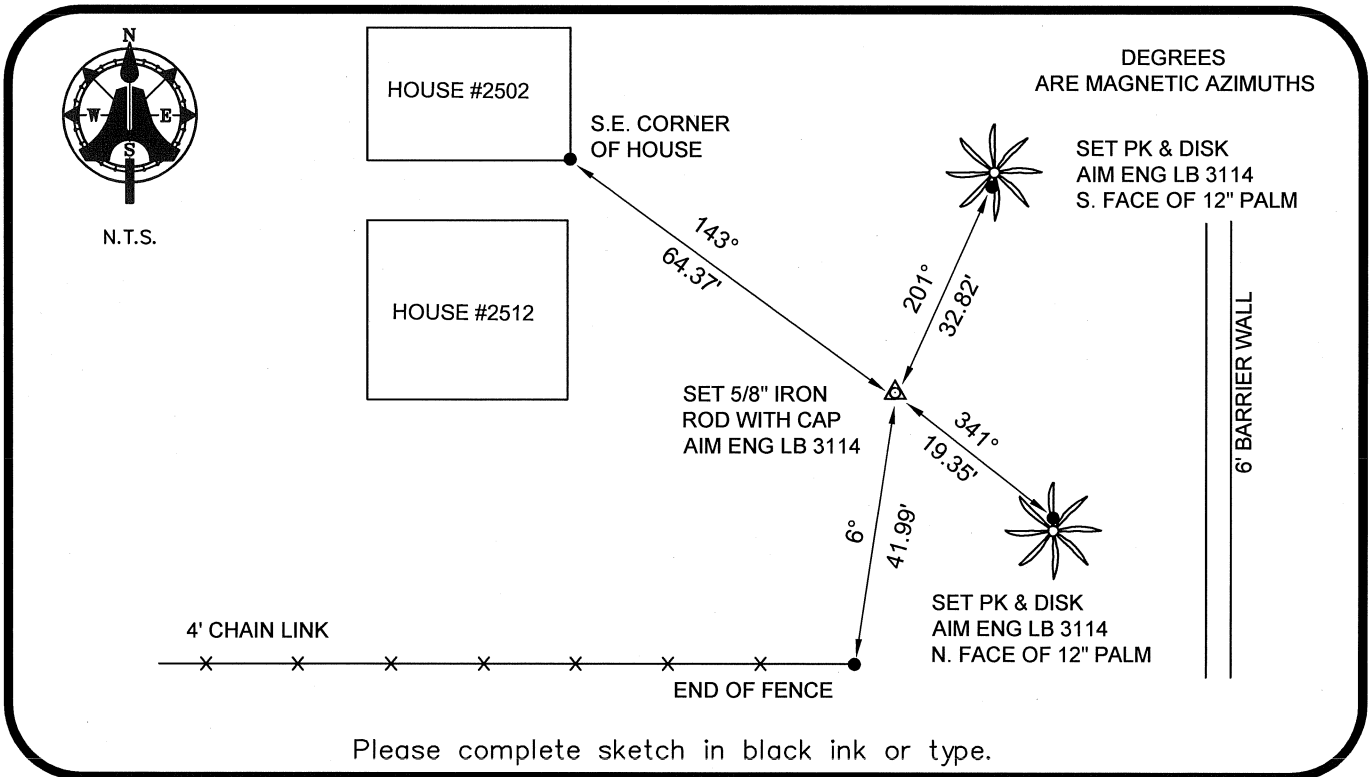
W 1/4 corner of Section 27
 Twp 43 S, Rge 26 E
 Tallahassee Base Meridian,
LEE County(s), Florida

PRIOR CCR'S:

DOC. # 083351

HORIZONTAL POSITION INFORMATION (if determined):

Latitude 26°42'27.7282" N Longitude 81°42'44.3778" W
 Y(NORTHING-Ft.) 863027.50 X(EASTING-Ft.) 750079.79 Zone WEST
 Convergence 00°07'45.5" Scale factor 0.99995129
 Coordinate determination: GPS
 Horizontal datum: NAD83(NSRS2007)
 Accuracy (circle one): 1st 2nd 3rd other 1:35,000



Please complete sketch in black ink or type.

SURVEYORS CERTIFICATE:

I certify the monument and accessories indicated above were field located on 03-13-2008

BEN R. HOMOLA

Ben R. Homola 3950
 SIGNATURE PSM NO.

AIM ENGINEERING & SURVEYING, INC. 3114
 FIRM OR AGENCY LB NO.

5300 LEE BOULEVARD
 LEHIGH ACRES ADDRESS FL 33971

(239)332-4569 07/30/2008 ZIP
 PHONE NUMBER DATE

EMBOSSSED SEAL OVER SIGNATURE

SEND ORIGINAL TO:
 Department of Environmental Protection
 Bureau of Surveying and Mapping
 3900 Commonwealth Boulevard
 Mail Station 105
 Tallahassee, Florida 32399

| | |
|-----------------|-------|
| D.E.P. USE ONLY | |
| Processed: | _____ |
| B.L.M. - I.D. | _____ |
| QUAD - I.D. | _____ |